


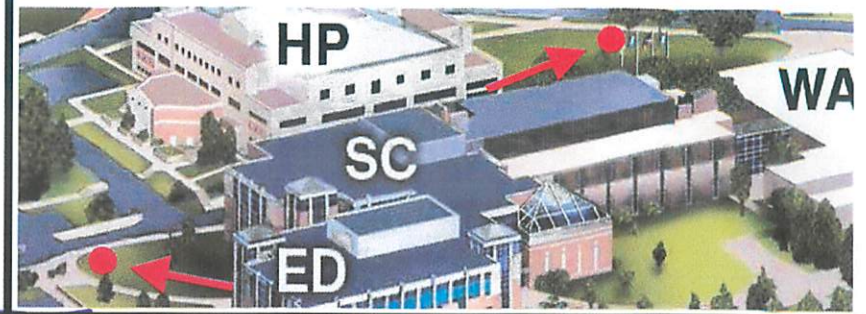
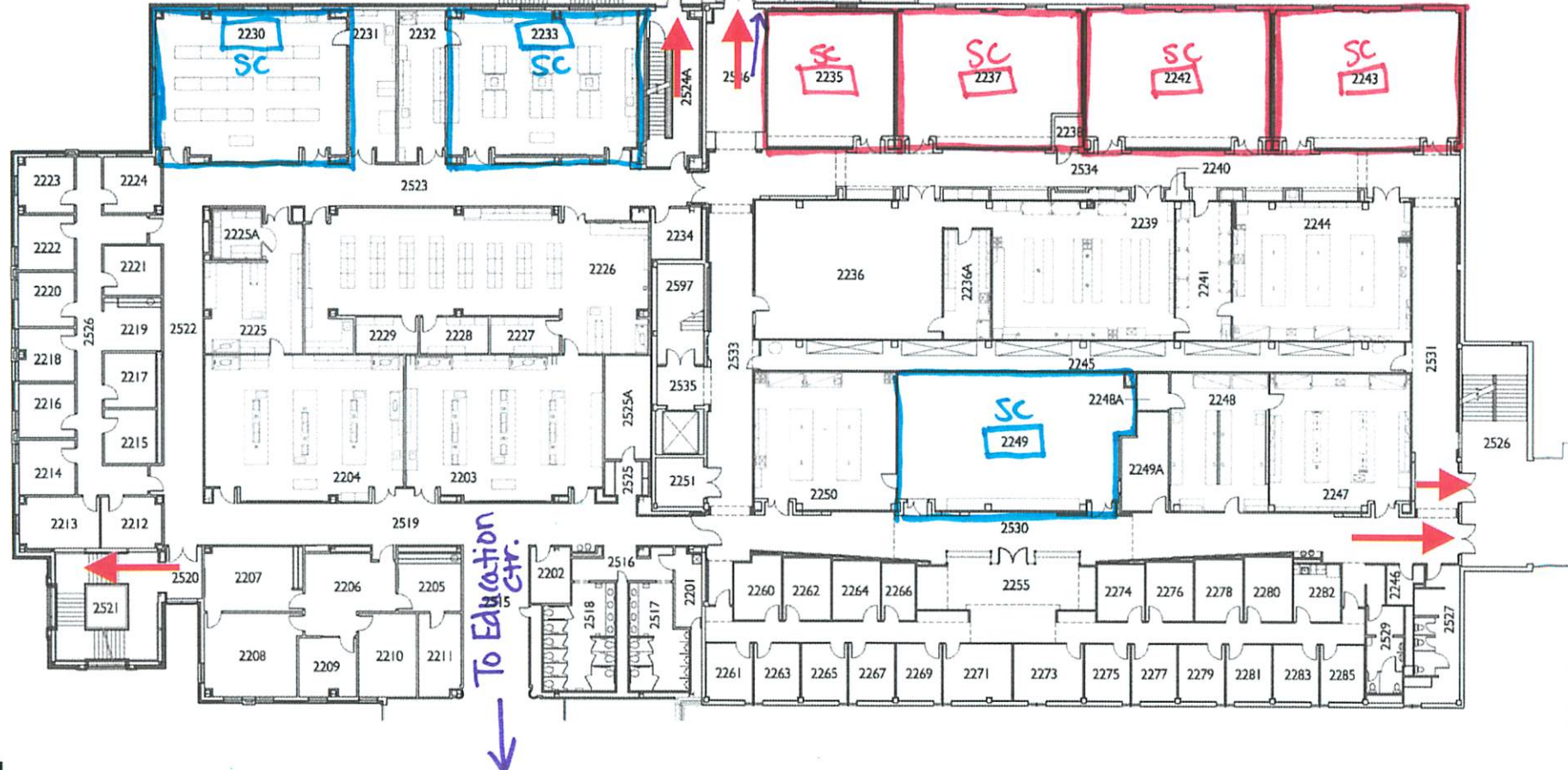


Science
Center
Second
Level
(Lunch)

-  Primary Exit
-  Evacuation Area
-  Severe Weather Gathering Area

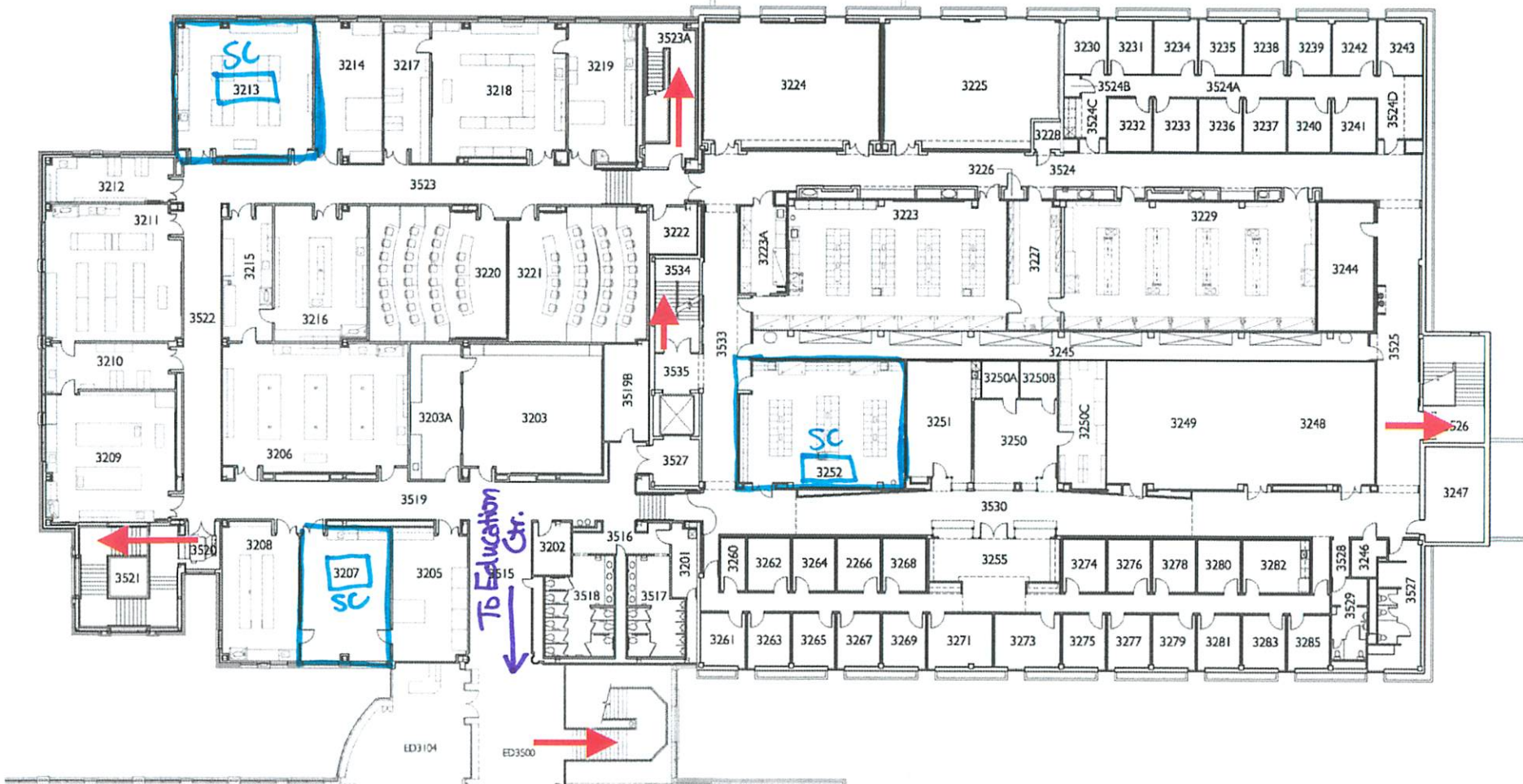
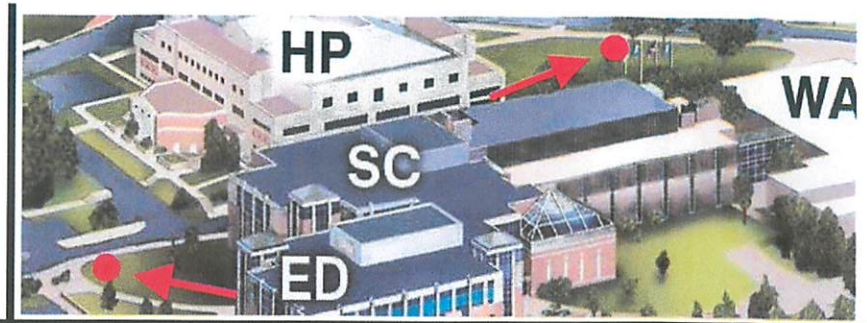
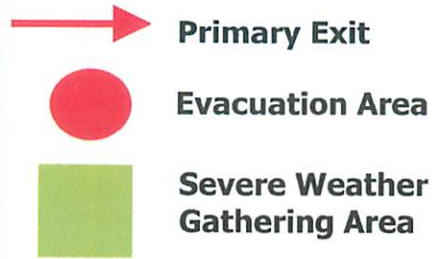


* The Link - Lunch + Vending



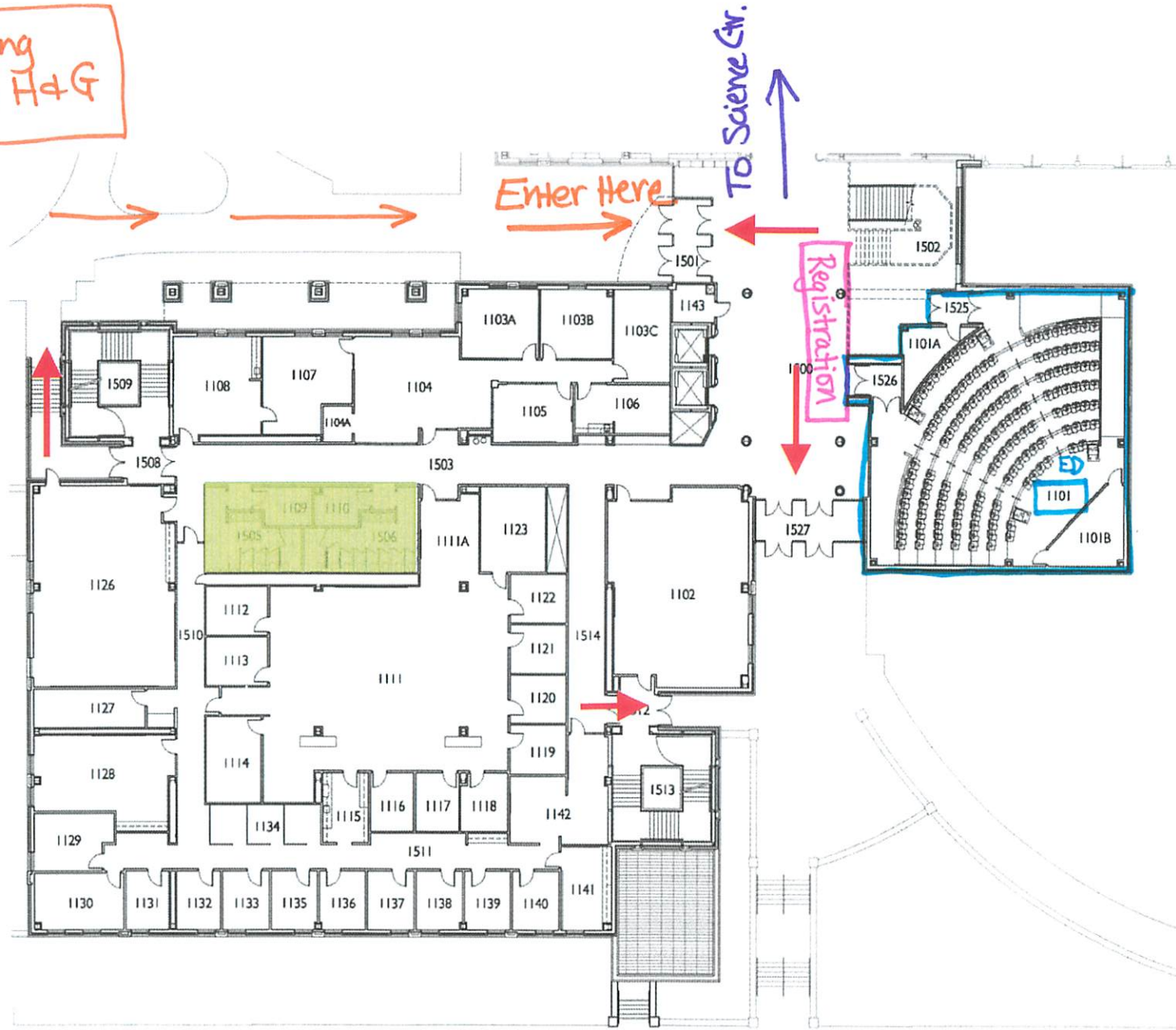
IN THE EVENT OF IMMEDIATE SEVERE WEATHER, PROCEED TO THE DESIGNATED "SEVERE WEATHER GATHERING AREA" IN THE LOWER LEVEL OF THE SCIENCE CENTER.

Science
Center
Third Level

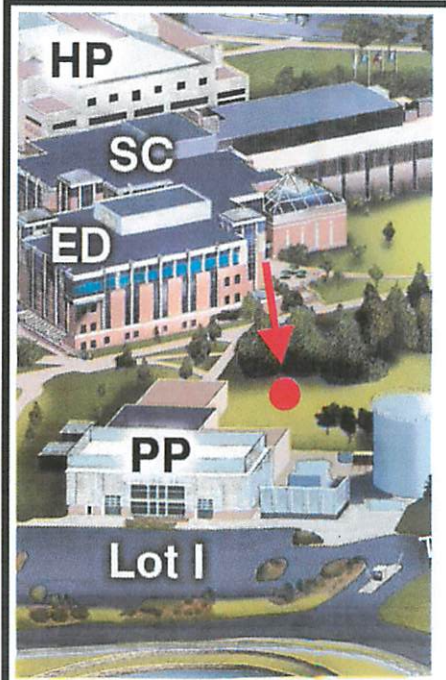


IN THE EVENT OF IMMEDIATE SEVERE WEATHER, PROCEED TO THE DESIGNATED "SEVERE WEATHER GATHERING AREA" IN THE LOWER LEVEL OF THE SCIENCE CENTER.

Parking Lots H&G

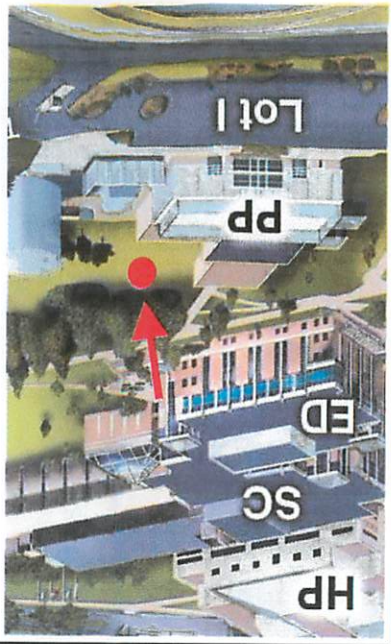





- Primary Exit
- Evacuation Area
- Severe Weather Gathering Area



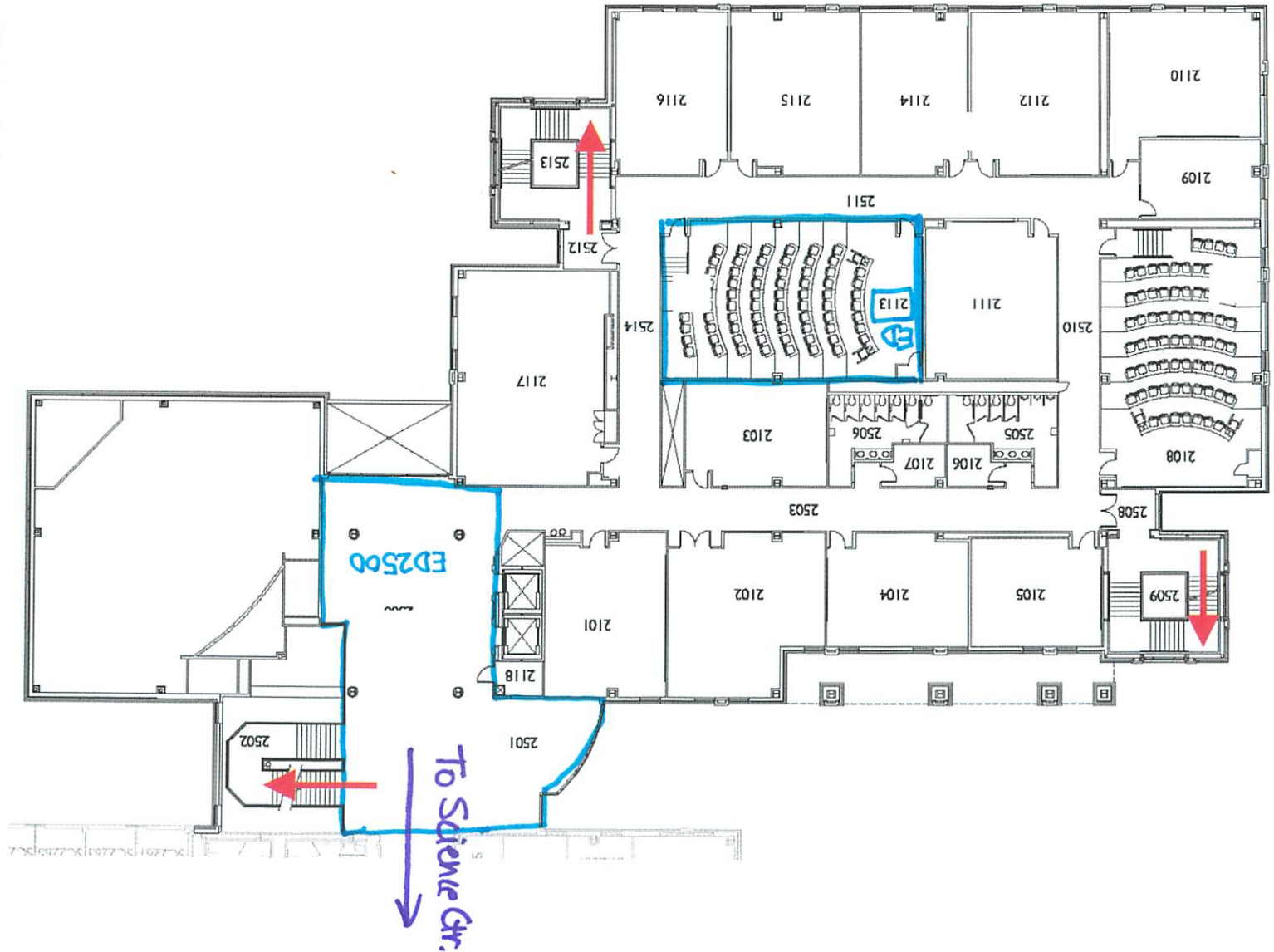
IN THE EVENT OF IMMEDIATE SEVERE WEATHER, PROCEED TO THE "SEVERE WEATHER GATHERING AREA" (ED CENTER REST ROOMS). IF TIME PERMITS, PROCEED TO THE LOWER LEVEL OF THE EDUCATION CENTER.





-  Severe Weather Gathering Area
-  Evacuation Area
-  Primary Exit

University of
Southern Indiana
Education Center
Second Level



IN THE EVENT OF SEVERE WEATHER, PROCEED TO THE DESIGNATED "SEVERE WEATHER GATHERING AREA" IN THE LOWER LEVEL OF THE EDUCATION BUILDING.



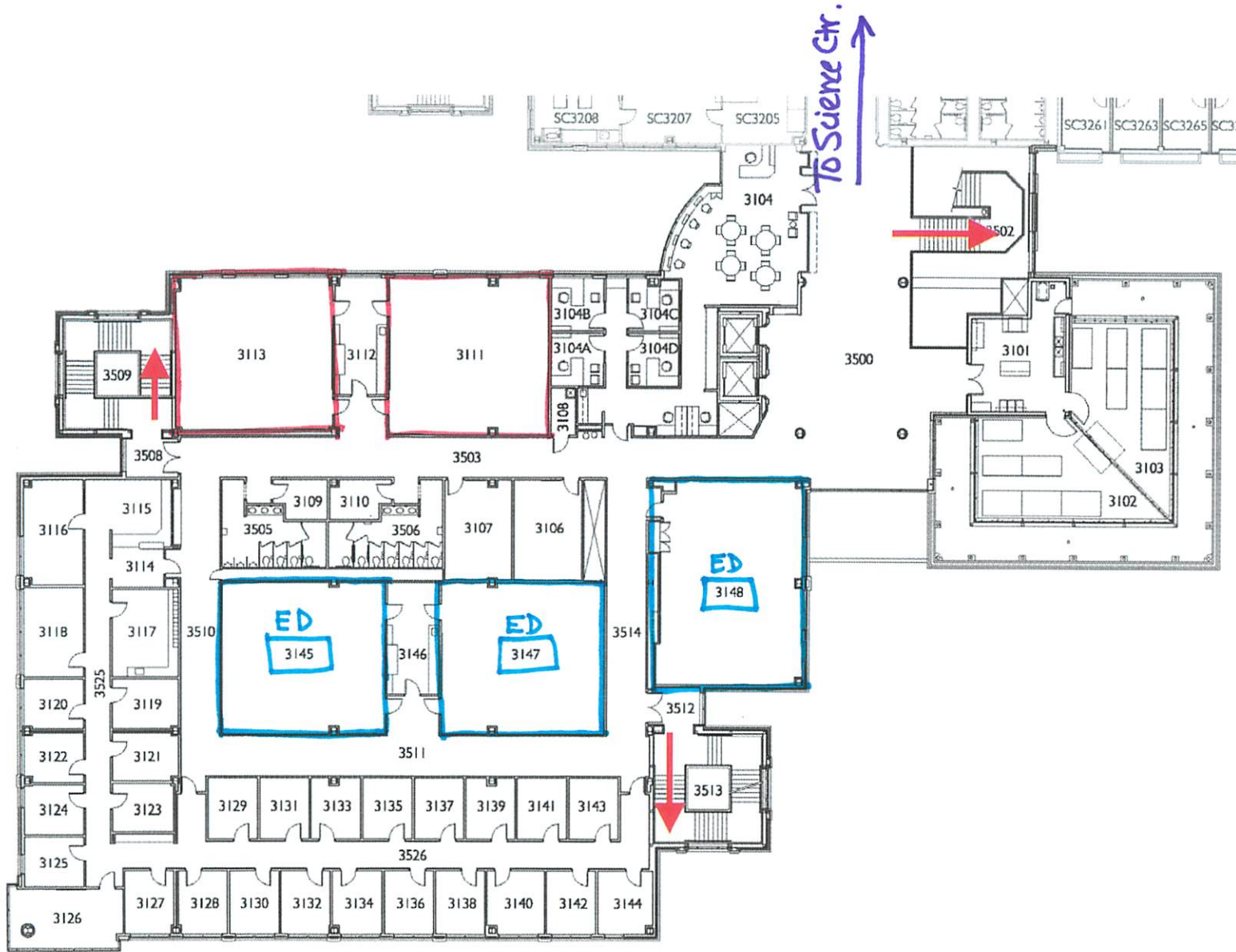
University of
Southern Indiana

**Education Center
Third Level**

 **Primary Exit**

 **Evacuation Area**

 **Severe Weather
Gathering Area**



IN THE EVENT OF SEVERE WEATHER, PROCEED TO THE DESIGNATED "SEVERE WEATHER GATHERING AREA" IN THE LOWER LEVEL OF THE EDUCATION BUILDING.

