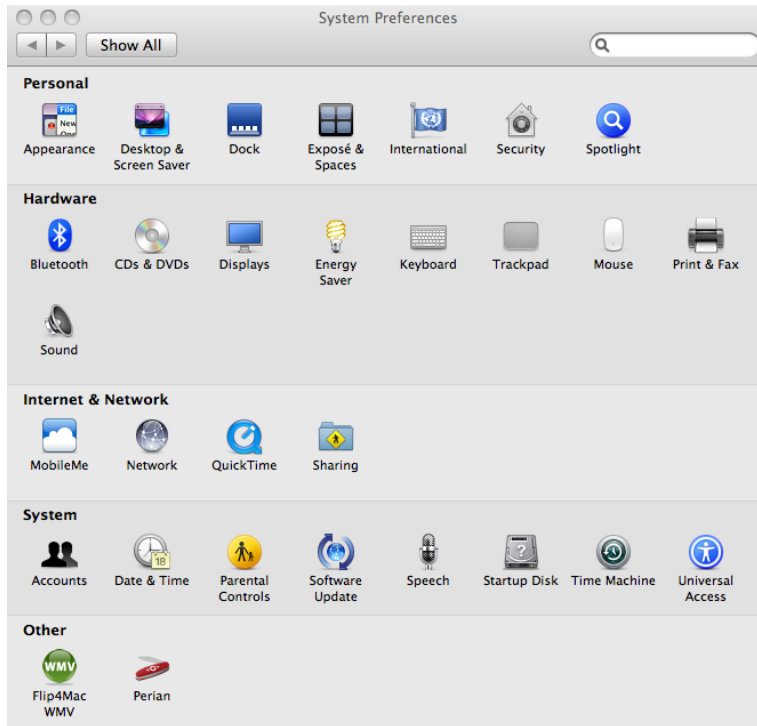
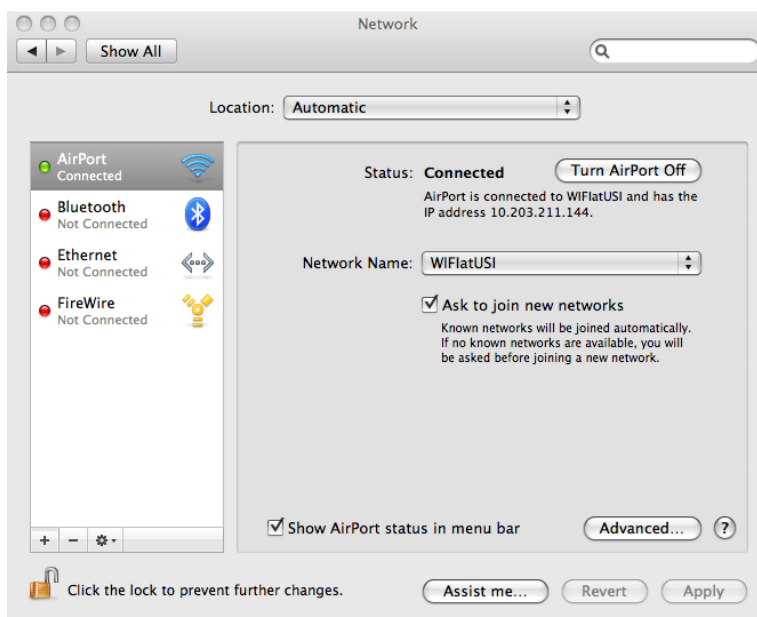


Open the System Preferences either by clicking the Apple menu at the top-left side of the screen or the System Preferences icon on the task bar at the bottom of the screen. Once it is open, click on Network.



You should see a list similar to the screenshot below. On the left, choose Airport. On the right of that screen it will show what network you are connected to (WIFlatUSI if on campus, USIRES if in housing). If there is nothing in this box, click on the arrows next to it and select the wireless network you want to join.



Test your internet connection by opening your web browser and going to a page you have never been to before (<http://www.ibm.com> for example). If it is active and working, you are done! If not, you may get a registration screen asking you to register your wireless connection. Simply enter you're my.usi.edu username and password. It will then say that registration is complete and that you need to reboot your machine. BEFORE doing that, click on the Safari menu at the top of the screen and click on "Empty Cache". When prompted, click the "Empty" button. Then quit Safari (Command-Q or Safari menu → Quit Safari. Reboot your machine. If you are still having issues, follow along...

If you click on the advanced button, you will get a screen similar to the one below. Make sure that all the setting on all the tabs (TCP/IP, DNS, WINS, etc...) are all set to their default values. AppleTalk should NOT be enabled. For the IPv6 setting, automatic should work, but for testing purposes it can be set to Disabled. If this fixes your internet connection, it can be left disabled. The Airport tab should have WIFlatUSI or USIRES listed.

