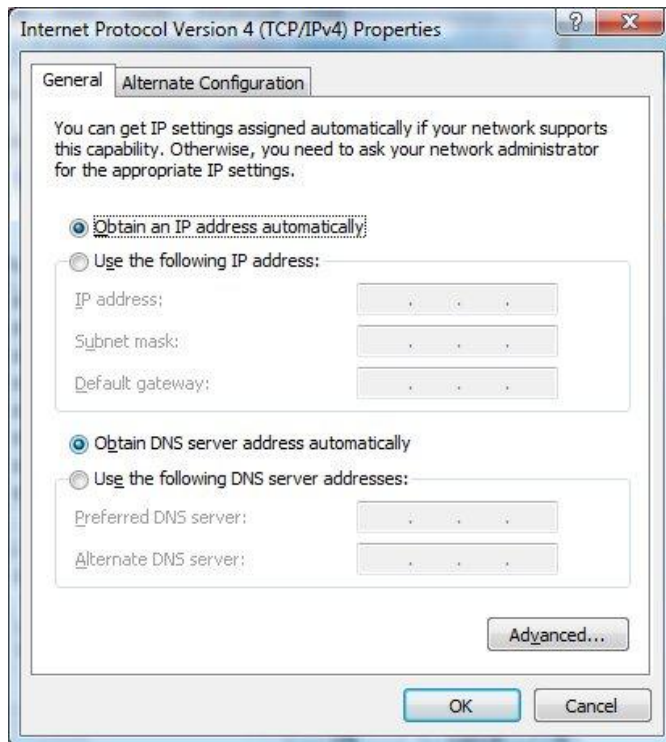
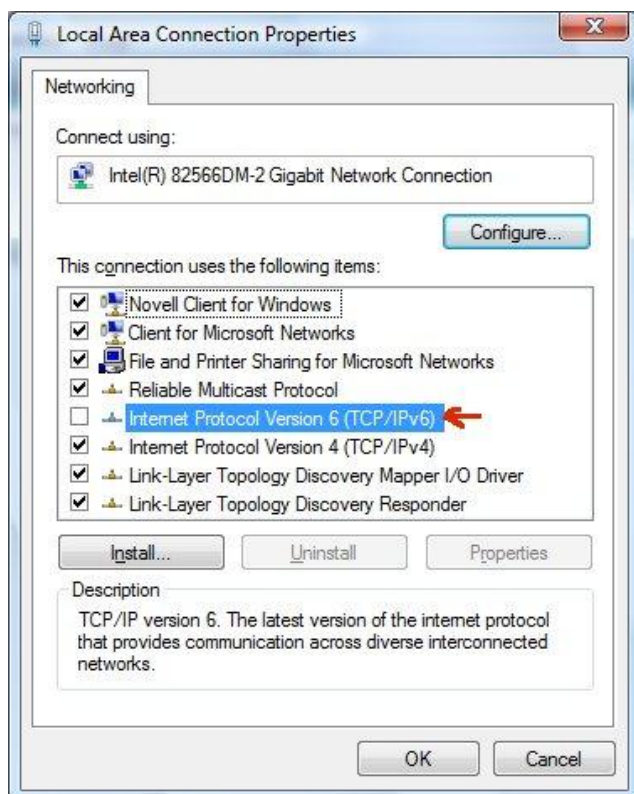


Suggestions to Students for PC Setup while Connected to the USI Network (Wireless network settings are below)

1. The only protocol installed should be TCP/IP.



**Configure it to get an IP address automatically (DHCP)
(Vista/Windows 7 make sure TCP/IP IPv6 is not clicked on, if it is uncheck it).**

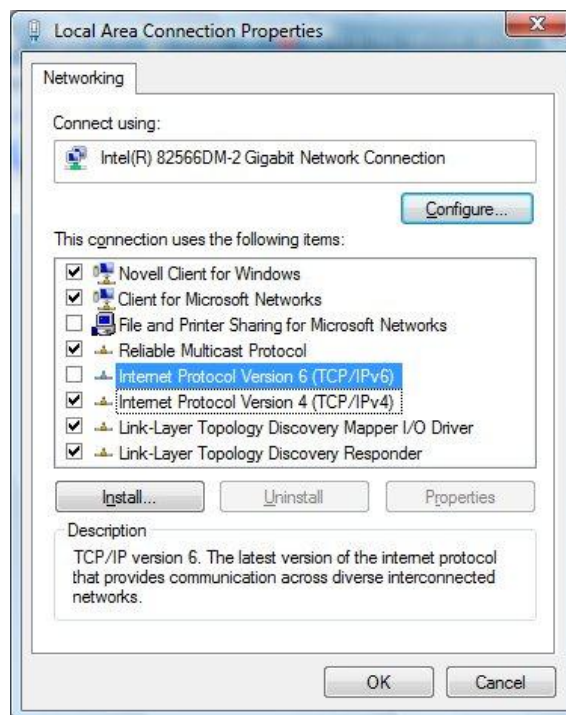
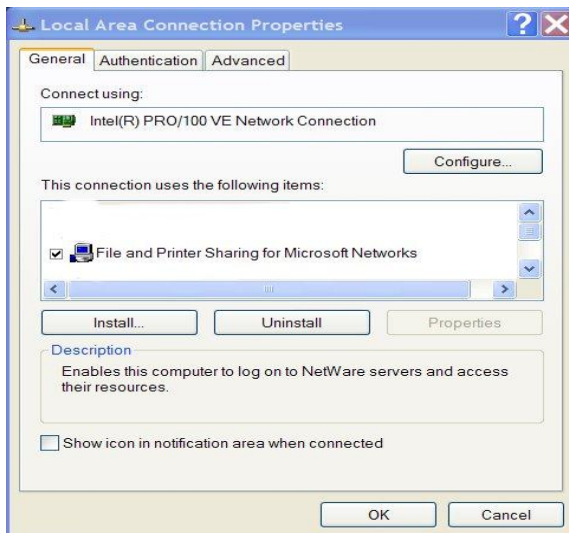


2. Make sure the cable used to connect the PC to the wall jack is Category 5 Ethernet. It has 8 wires, unlike phone wire, which is smaller and has 6 wires.

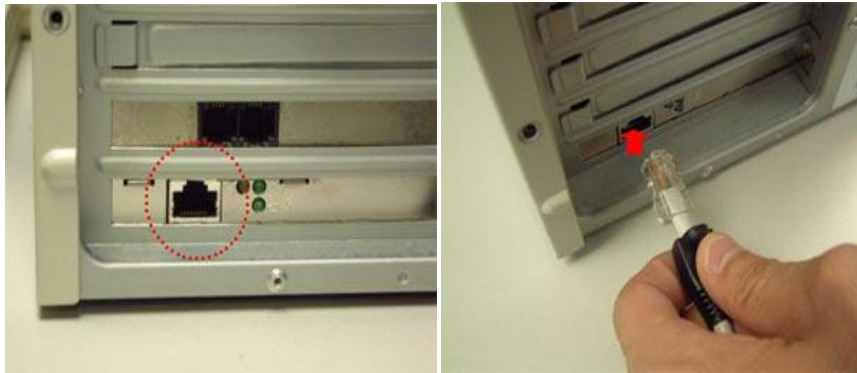


3. Make sure file and printer sharing is not installed. File and print sharing can allow any students living in campus housing to access the entire hard drive of the PC on which it is installed. To remove file and print sharing,

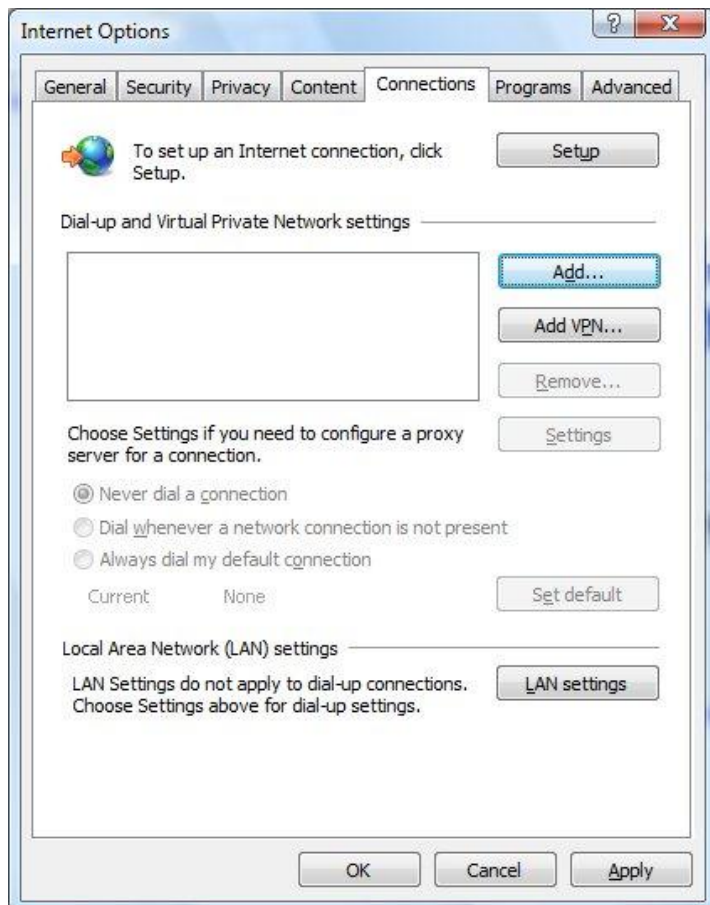
How to Disable File & Print Sharing



b) Ensure that your Ethernet cable is firmly plugged in, at the wall and on the PC. Look for a light on the back of the PC's Ethernet adapter. If you have a link light and a flashing activity light, the problem might be with the PC's configuration. Proceed to d) or e) as appropriate for your operating system. If there are **no lights**, call x1080 and report the problem to the Help Desk.



c) If Internet Explorer tries to dial to your ISP, cancel the dial window. While running IE (5.0 or above), click on Tools, then click on Internet Options. Go to the Connections tab; click the button saying "Never dial a connection". Also while there, click on "LAN settings", and make sure none of the boxes are checked. If they are, uncheck them.



If problems persist, proceed to d) or e) as appropriate for your operating system.

For Windows 2000 and XP: Click on "Start", then "Run". In the box, type "CMD" and click on "OK". You will get a black DOS window with a flashing cursor, type "IPCONFIG / ALL" and press the ENTER key. It should display a list of all adapters installed and their associated IP addresses. Look for the Ethernet Adapter information, and check to see that the IP address is specified is in the form of "10.x.y.z". *If you cannot find your Ethernet Adapter in that list, you must reinstall your Ethernet adapter drivers. If you experience difficulty at this point, call the Help Desk at x1080. They can assist you or give you information about where you can take your PC to have the Academic staff install your drivers and verify the operation of your Ethernet adapter.* At the flashing cursor, type "IPCONFIG /RELEASE" and press Enter. You should get a message stating that IP Address was successfully released. Then again at the flashing cursor, type "IPCONFIG /RENEW" and press Enter. It should display your new IP address in the form of "10.x.y.z". If you get a message stating "No operation can be performed on the local area connection..." then check your cable and make certain it is properly connected. If problem remains, call x1080.

```
C:\WINNT\System32\cmd.exe
C:\>ipconfig /all
Windows IP Configuration

Host Name . . . . . : toto
Primary Dns Suffix . . . . . : usi.edu
Node Type . . . . . : Peer-Peer
IP Routing Enabled. . . . . : No
WINS Proxy Enabled. . . . . : No
DNS Suffix Search List. . . . . : usi.edu

Ethernet adapter Local Area Connection:

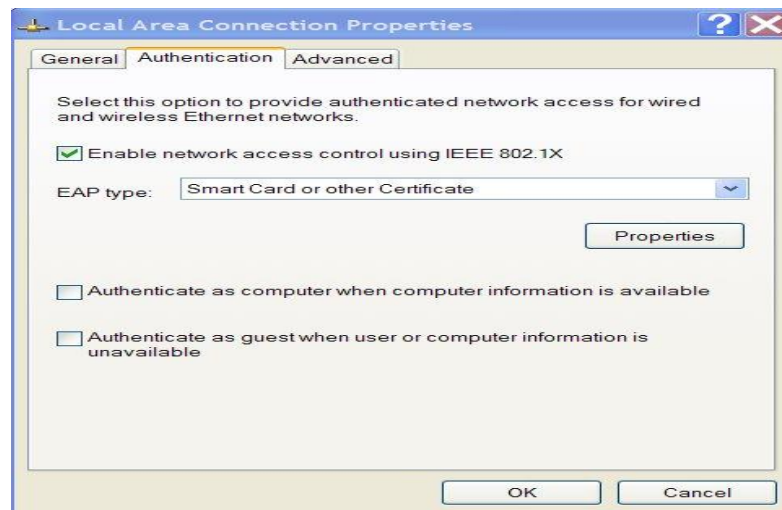
Connection-specific DNS Suffix . . . :
Description . . . . . : Intel(R) PRO/100 VE Network Connection
Physical Address. . . . . : 00-03-47-F2-D6-FD
Dhcp Enabled. . . . . : Yes
Autoconfiguration Enabled . . . . . : Yes
IP Address. . . . . : 10.11.16.50
Subnet Mask . . . . . : 255.255.255.0
Default Gateway . . . . . : 10.11.16.10
DHCP Server . . . . . : 10.12.10.5
DNS Servers . . . . . : 10.12.10.5
Primary WINS Server . . . . . : 10.12.10.5
Lease Obtained. . . . . : Wednesday, January 08, 2003 8:24:04 AM
Lease Expires . . . . . : Wednesday, January 15, 2003 8:24:04 AM

C:\>
```

In Vista you should see this screen, when you go to Control Panel, Network and Sharing Center.

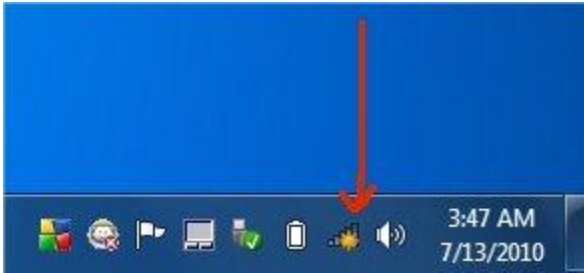


For Windows XP only: Click "Start", click on "Settings - Control Panel". Then in the Control Panel window, find the Icon for "Network Connections". Right mouse click on the icon for your LAN connection; Click on "Properties", click on the "Authentication". Make sure the check box for "Enable Network Access Control using IEEE 802.1X" is unchecked. If it is checked, then uncheck, and click the "OK" button at the bottom of the window.



Suggestions to Students for Laptop setup on the USI Wireless Network

On the right side of the taskbar, you will see a wireless network icon like the one below. Click on it



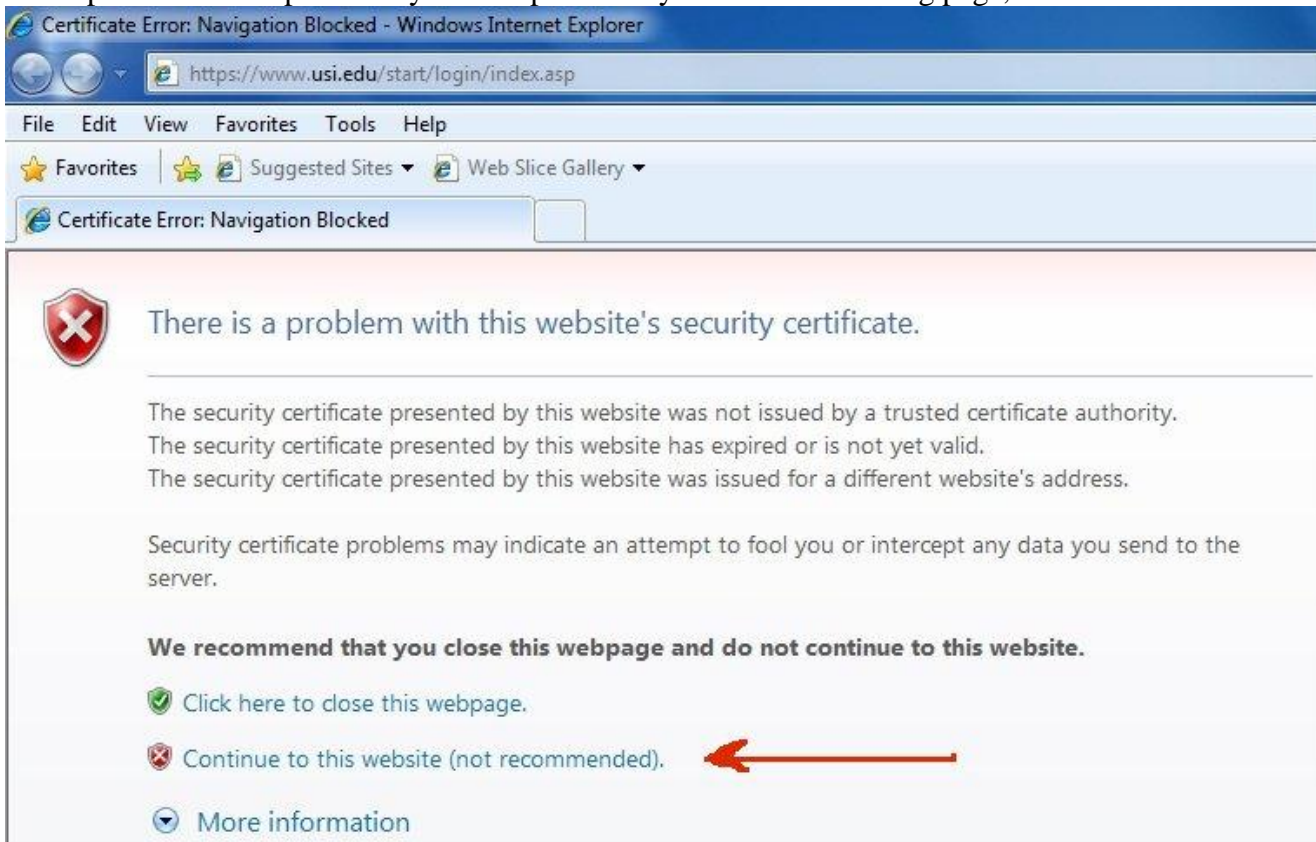
A window with available network connections will open. To refresh the list of available networks, click on the button highlighted in the screenshot below.



Once you decided on which network to connect to, click on it. Next, click on the Connect button.



Next open Internet Explorer on your computer and you see the following page, click on continue



You should see the registration page for USI, enter your MYUSI username and password.

The screenshot shows a Windows Internet Explorer browser window with the address bar set to `usi.edu`. The page title is "Online Network Registration". The University of Southern Indiana logo, featuring a yellow eagle head and the text "University of Southern Indiana HOME OF THE SCREAMING EAGLES", is at the top. Below the logo is the heading "Registration Info". The text reads: "Please enter your MyUSI username and password." There are two input fields: "User Name:" with the text "username" and "Password:" with a masked password of seven dots. Below this is the heading "Acceptable Network Usage Policy". The text states: "The University expects that all persons who make any use of University computing hardware, software, networking services, or any property related or ancillary to the use of these facilities, will abide by the University's **Data Communications and Computer Use Policy**. For complete policy text, click [here](#)." On the left side of the page, there is a black sidebar with white text: "Networking is supported by the Computer Services Network Staff." and "For help registering your computer or to report a problem with access, please call the Helpdesk at (812/465-)1080."

Now scroll down to the bottom of the page and click accept.

This screenshot shows the bottom portion of the registration page. It features a list of three prohibited activities, each preceded by a small circle:

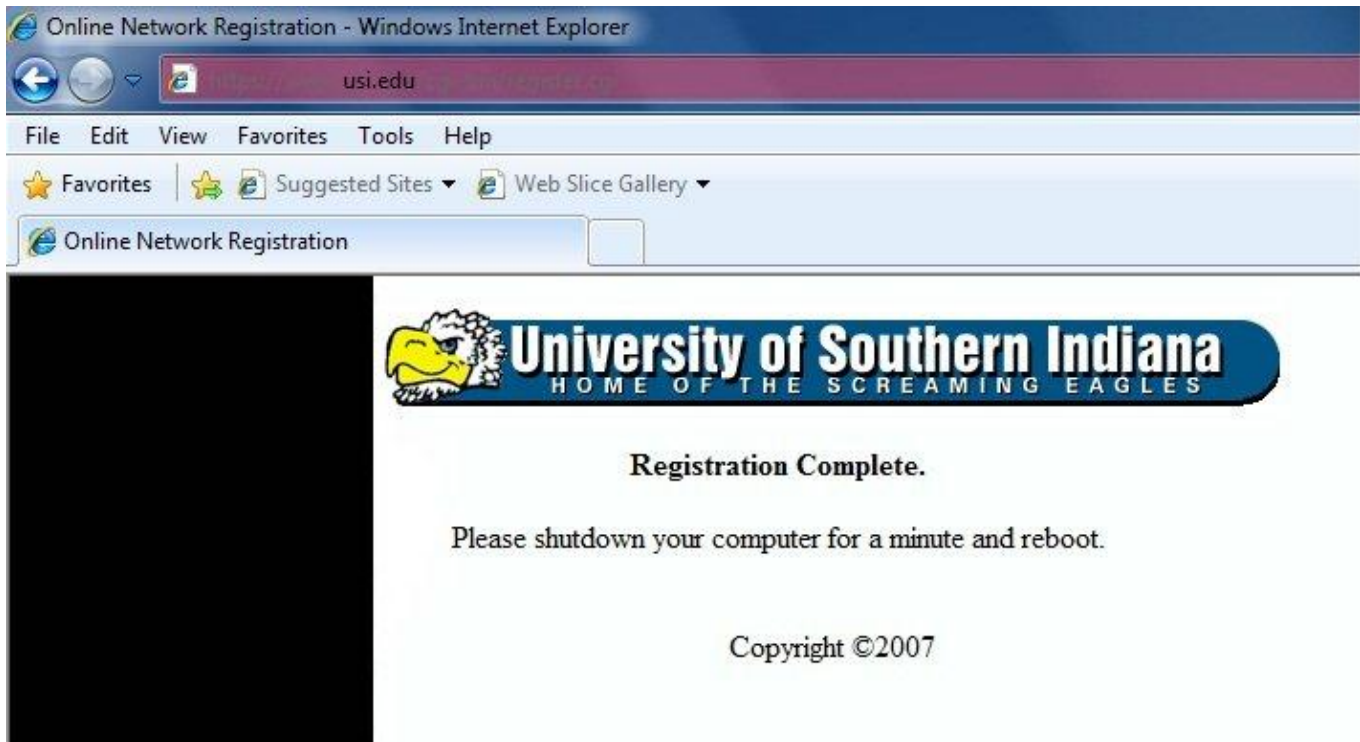
- o to initiate or forward e-mail chain letters,
- o to cause breaches of computer, network or telecommunications security systems,
- o to initiate activities which unduly consume computing or network resources.

Below the list, the text reads: "Individuals who violate the aims of this policy may be subject to disciplinary action or to referral to law enforcement authorities. Computer Services Network staff are authorized to monitor suspected violations and to examine items stored on any University storage medium by individuals suspected of violating this policy."

Further down, it states: "By clicking 'Accept' you signify that you have read and will abide by the terms of the University Acceptable Network Usage Policy. **You must accept this policy to use the network.**"

At the bottom, there is a blue "Accept" button. A red arrow points to the right, indicating the button's location. The browser's status bar at the very bottom shows "Internet |".

If you entered your username and password correctly you will see the following conformation page, which would mean that your computer is now registered on the USINETWORK and ready to use, once you restart it.



Revision Date: 7-12-2010