



We are excited to offer a bachelor's degree program to imaging professionals who wish to expand their knowledge into advanced modalities, education, or management.

- Course work accessed through the Internet
- Students may choose from a variety of degree concentrations
- Participation in degree program promotes advancement in leadership positions

**For more information
contact:**

Dr. Martin Reed
Program Director
mreed@usi.edu

Or

Help Desk
812/465-1181

Frequently Asked Questions

1. Can I complete any of the specialty track programs?

Students can choose from any of the specialty track programs to complete their BS degree. Completing more than one will not result in a double BS degree.

2. How are courses for the specialty tracks taught?

All courses for the specialty tracks have an online option. For some courses, students can choose to attend class. Course materials, testing, and assignment submission are done through the University's Blackboard system. For specific course information, please contact the individual listed beneath the specialty track of interest.

3. How long will it take to complete the BS degree?

It varies from student to student. Some choose to take one class at a time, while others choose to take 12 or more credit hours a semester. Students who need to complete the University Core Curriculum will require more time.

4. How does my AS degree from my university count toward this degree?

All students, even those from non-degree programs, who have passed the ARRT registry for radiology will receive credit for the AS program as the equivalent to the AS program at USI. Those students who have passed the ARRT examination must submit a copy of their current certification with their application materials.

5. How does transferring of credit hours work?

The university evaluates all transcripts from all universities. Please see the university's [transfer credit policy](#) for more information.

6. Do I have to complete the course work in a predetermined amount of time?

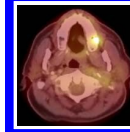
No. Courses for each of the specialty tracks can be taken in any order. Students can take as little as one class a semester or enroll in a full class load.

7. Can I take classes for registry review purposes without completing the degree?

Yes. Degree completion is not a requirement of enrollment in any course.

8. How does the clinical portion of the CT/MRI specialty track work?

Because this is an online education program, clinical sites are not provided by the program. Clinical education is usually done where the student is employed. If there is not a CT/MRI suite in the student's workplace, the student is responsible for finding a clinical site. A contract with the University and the imaging facility may be necessary.



OPEN THE DOOR
TO YOUR FUTURE

Bachelor of Science Radiologic And Imaging Sciences

Via the Internet



**RADIOLOGY
MANAGEMENT**



**UNIVERSITY OF
SOUTHERN INDIANA**

Are you a registered radiographer, busy with career and family responsibilities, who would like to complete your bachelor's degree in Radiologic and Imaging Sciences?

The University of Southern Indiana, through its distance education program, may be just right for you.

No matter where you live and no matter what shift you work, this program at an accredited university is accessible 24 hours a day and 7 days a week by way of the Internet. With 36 hours of radiology management courses and the completion of the University Core Curriculum, you can earn a Bachelor of Science in Radiologic and Imaging Sciences.

DEGREE COMPLETION REQUIREMENTS

1. **COMPLETION OF UNIVERSITY CORE CURRICULUM** AS OUTLINED IN CURRENT BULLETIN: 50 HOURS. [HTTP://HEALTH.USI.EDU/ACADPROG/RADTECH/UCC.HTM](http://health.usi.edu/acadprog/radtech/ucc.htm)
2. A GRADE OF C OR BETTER IN ALL RADIOLOGIC AND IMAGING SCIENCES COURSES.
3. A MINIMUM OF 124 CREDIT HOURS.
4. A MINIMUM OF 30 CREDIT HOURS MUST BE TAKEN AT THE UNIVERSITY OF SOUTHERN INDIANA.
5. A MINIMUM OF 39 HOURS OF 300/400 LEVEL CREDIT HOURS.
6. REGISTERED RADIOGRAPHERS WITH CURRENT CERTIFICATION WILL BE GIVEN CREDIT FOR THEIR COMPLETED PROFESSIONAL COURSES.
7. OBTAIN AN AVERAGE OF 2.0 GRADE POINT AVERAGE ON ALL COURSE WORK TAKEN AT THE UNIVERSITY OF SOUTHERN INDIANA.

09.23.2008

RADIOLOGIC AND IMAGING SCIENCES

RADIOLOGY MANAGEMENT SPECIALTY CURRICULUM*

- HP 211 THE HEALTH CARE DELIVERY SYSTEM (3)
- HA 356 ETHICS & HEALTH CARE IN A PLURALISTIC SOCIETY (3)
- HP 302 BIOSTATISTICS (3)
- HA 411 HEALTH CARE SYSTEM MANAGEMENT (3)
- HA 421 FINANCIAL MANAGEMENT IN HEALTH CARE (3)
- HP 431 HEALTH INFORMATION & QUALITY IMPROVEMENT MANAGEMENT (3)
- HA 496 MARKETING / COMPETITIVE STRATEGIES IN HEALTH CARE ORGANIZATIONS (3)
- RADT 305 CURRENT ISSUES IN RADIOLOGIC & IMAGING SCIENCES (3)
- RADT 307 CRITICAL THINKING SKILLS IN RADIOGRAPHY (3)
- RADT 411 CT/MRI PHYSICS & INSTRUMENTATION (3)
- RADT 424 RADIOLOGIC AND IMAGING SCIENCES PRACTICE AND RESEARCH (3)
- RADT 427 RADIOLOGY DEPARTMENT INFORMATION SYSTEMS (3)

TOTAL HOURS = 36

*THIS IS A SAMPLE CURRICULUM FOR THIS DEGREE COMPLETION PROGRAM. CONTACT DR. REED FOR DETAILED COURSE LIST.



UNIVERSITY OF SOUTHERN INDIANA

8600 University Boulevard
Evansville IN 47712
Phone: 812-465-1181
Fax: 812-465-7092
<http://www.usi.edu>

INSTRUCTION METHODS

A combination of delivery methods are used to facilitate student learning.

On Campus Instruction may be available for students who choose this option.

CDs provide audiovisual instructor presentations and demonstrations.

BlackBoard, an e-education platform—designed to enable educational innovations everywhere by connecting people and technology—allows students to interact on a one-to-one and group basis with other students and faculty members. Assignments, tests, and papers can be given and/or received through your personal BlackBoard.

Indiana College Network (ICN) is a collaborative effort by Indiana colleges and universities. Each semester, USI joins the other partner institutions to create [the Indiana College Network Database of Courses](#) available online. USI students are able to take distance education courses at other partner institutions. Visit the [ICN website](#) to locate distance education courses and programs across Indiana.

QUICK LINKS

College of Nursing and Health Professions
<http://www.health.usi.edu>

Radiologic and Imaging Sciences
<http://health.usi.edu/acadprog/radtech/default.asp>

Bulletin
<http://www.usi.edu/admissn/bulletin.asp>

Distance Education
<http://www.usi.edu/distance/index.asp>

Online Registration Schedule
<http://www.usi.edu/reg/early.asp>

Registrar's Office
<http://www.usi.edu/reg/index.asp>

University Core Curriculum
<http://www.usi.edu/libarts/uccore/index.asp>

David Rice Library
<http://www.usi.edu/library/index.asp>

Indiana College Network
<http://www.icn.org/>