



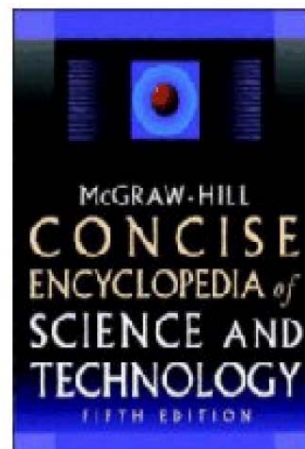
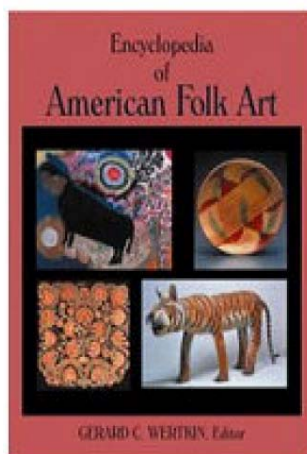
CREDO REFERENCE



What is Credo Reference?

Credo Reference is a digital library of approximately 300 electronic reference books that allows researchers to find information from authoritative reference resources, some of which are also in Rice Library's traditional Reference Collection (1st floor). While its main content is encyclopedias and dictionaries (both general and specialized), Credo also contains a substantial amount of images of art and maps of countries. Titles can either be individually browsed or searched simultaneously. Some of the titles include:

- *The Encyclopedia of American Folk Art*
- *Collins Spanish Dictionary*
- *Wall Street Words*
- *Bender's Dictionary of Nutrition and Food Technology*
- *Encyclopedia of the European Union*
- *Holocaust Literature: An Encyclopedia of Writers and Their Work*
- *Mosby's Dictionary of Complementary and Alternative Medicine*
- *The Concise Corsini Encyclopedia of Psychology and Behavioral Science*
- *Who's Who in Classical Mythology*
- *McGraw-Hill Concise Encyclopedia of Science and Technology*



How do I access Credo Reference?

Users affiliated with USI (students, faculty, and staff members) can use Credo Reference on campus or off, by going to www.usi.edu/library/dbases2/Reference.htm or by following these steps: (1) go to www.usi.edu/library, (2) click on "Databases," then choose "Reference" for the type of database, (3) click on Credo Reference, and, if you are off-campus, (4) supply your MyUSI username and password.

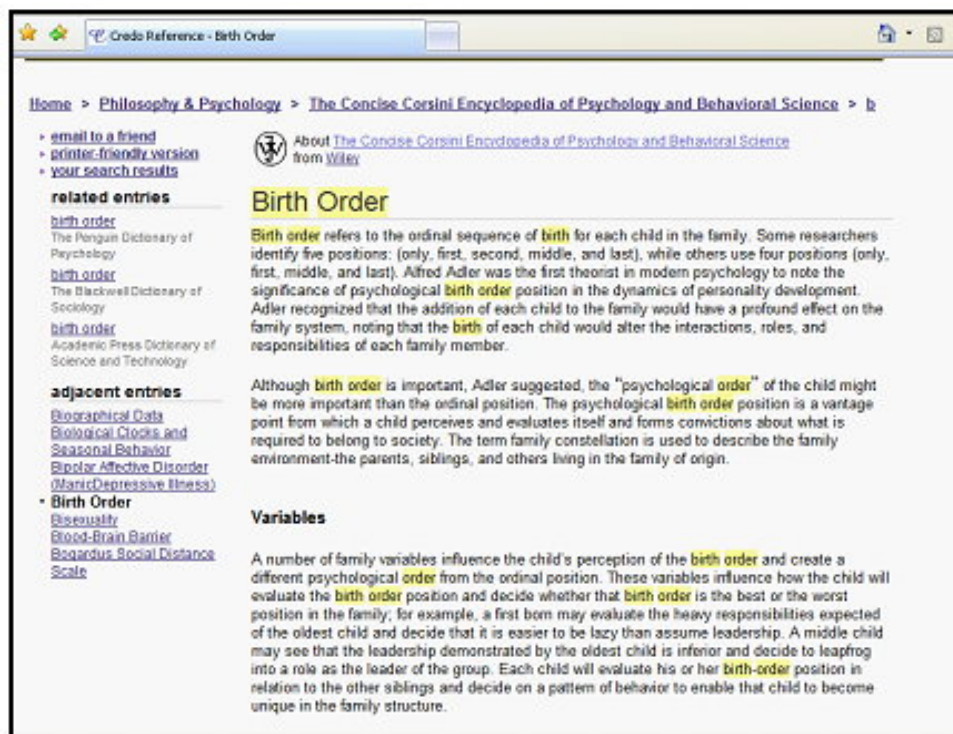
Why should I use Credo Reference?

There are three advantages to starting your research with Credo Reference:

1. Results contain key definitions, dates, maps, photographs, facts, statistics, names of people, and additional background information on your topic.
2. The contents are full-text, so you can use it from home.
3. The e-book titles are from reputable publishers such as Cambridge University Press, Routledge, Barron's, and Harvard University Press.

Use Credo Reference if you have research questions like the following:

- What is the theory of pragmatism?
- I want to know more about the Brown vs. Board of Education case from the 1950's.
- I recently heard about an Italian painter named Caravaggio; who is he?
- How is a person's birth order related to personality?
- Sample entry in Credo Reference's results for the search "birth order" :



How can I get more help with Credo Reference?

Reference librarians will help you with Credo Reference and any other research question. Visit, call or email the Rice Library Reference Desk: (812) 464-1907 / 1800-246-6173, or libref@usi.edu. Faculty: Schedule library instruction for reference and other resources by going to www.usi.edu/library/libinstruc07.asp; to create durable links to Credo Reference articles in BlackBoard, go to www.usi.edu/library, click on "Faculty Services," then "Guides," and "Getting Library Resources Into Blackboard".

Spotlight Archives