

LIVE ON

2011

2012

HOUSING/FOOD SERVICES BOOKLET

HOUSING
CONTRACT
NOW ONLINE
WWW.USI.EDU/RES



University of
Southern Indiana

Live On, Live Green

The goal of Housing and Residence Life is to Go Green in everything we do. We accept individual ownership of our environment, know that we control it, and apply that universally in our daily life in the classroom, at work, and at home.

USI has a total of 20 recycle stations throughout campus and its residence halls. Each apartment and suite is provided with a green recycle bin for residents to collect their recyclable materials before taking to the recycle station. The recycle stations are serviced daily by students on the recycle committee who collect the material from the stations and deliver it to the recycle processing center. Student involvement is the best way to see the recycle triangle complete itself.

Resident Assistants (RAs) conduct a host of programs throughout the year to get the Go Green message to residents, such as:

Recycle contest – two residence halls face off to see who can collect the most recyclable material in 30 days.

Energy conservation contest – two or more communities challenge each other to use the least electricity for one to three months. Amazingly, this past year the contest showed a savings of over \$30,000, which equates to a huge energy savings and reduces the carbon emissions footprint!

Teaching modules – we created modules on recycling paper, plastic, steel, aluminum, and glass. The modules are designed to teach kindergarten through college level, and are used for RA programs, Earth Day, and student teaching.

The goal for Live on, Live Green is to educate residents about the importance of their individual role as a steward of the environment. Larger programs have no chance of succeeding unless everyone understands and takes ownership of their piece of the environmental pie. You can make a difference.



Congratulations on your admission to the University of Southern Indiana.

You've chosen USI as your university. Now discover where you will live during your college experience. Many things, like convenience, safety, and cost, will impact your decision.

This booklet will help you plan how you will connect with fellow students, University services, library facilities, and computer resources. Also think about how you will navigate this dynamic, innovative, and challenging university. We think you will see that campus housing is the right place for you.

Inside, you will find information about campus housing and directions to the online application. On-campus housing is a popular option for many students, so don't delay, apply today!

With Screaming Eagle Pride,

The Housing and Residence Life Team

Inside

Campus Living Advantages	2
Campus Living Options	6
Living Learning Communities	8
Communities and Rooms	10
Food Service Operations	13
How to Apply and Timeline	15
Winter, Summer, and Disability Housing	18
Late Applicants, Payments, Contracts, and Rates	20

CAMPUS LIVING: ADVANTAGES



Accept the Challenge!

College is a time of transition—and a time of preparation. Living on campus is an outstanding way to prepare for life beyond the college experience. You will learn basic living skills like cooking, laundry, cleaning, and budgeting, and you will be introduced to new viewpoints and cultures. When you become part of our housing community, you take advantage of the rich variety of educational, social, and recreational activities that will help you now and in the future.

Academic Support

Campus housing provides educational programs, living learning communities, computer labs, study lounges, and quiet hours to maintain an environment supportive of academic success.

Choice

First-year students may choose to live in campus apartments or in the residence halls. Students who choose residence hall living may decide to live in one of 10 different first-year living learning communities. Students in their second, third, and fourth years may choose to live in one of four different apartment areas.

Technology Services

All campus housing facilities have direct Ethernet connections and wireless Internet access to serve your academic needs. Computer labs are located in the residence halls and in the Housing and Residence Life Center. Students are close to University computer labs and can get technical support from the USI Computer Center.

Convenience

By living on campus, you are always close to academic buildings, Rice Library, the Recreation, Fitness, and Wellness Center (RFWC), campus activities, athletic events, campus dining options, and the campus shuttle bus. Because things are convenient, you seldom have to search for a parking space, something to do, or help when you need it.

Friendship

From the day you move in, you'll find a variety of educational and social programs that help ease your transition to USI. Living on campus provides the best environment for expanding your understanding of people and for making new friends.

Involvement

Campus living also provides great ways to easily get involved in USI campus life by joining clubs and organizations, participating in intramurals, attending athletic events, taking on leadership roles, exploring academic programs, and simply kicking back and hanging out with friends.

Safety and Security

Campus housing is staffed with full-time professional and student staff who are dedicated to supporting your success at USI. Housing staff members are available and on call. USI Security always is available to assist you.

Save Money

Campus living is affordable, maintenance-free, and your bills are predictable. Cable television, Internet service, utilities (electric, water, sewage, local phone), and shuttle bus service are provided at no additional cost. This leaves you free to focus on the most important things—your academic and personal success!

CAMPUS LIVING: ADVANTAGES



We have what you need to succeed!

Whether you are in a campus apartment or one of the residence hall suites, you will have all you need to succeed. All rooms are furnished, and are equipped with a telephone, phone services, and wired and wireless Internet access. Utilities are included in your housing rate. Even basic expanded cable service is available—you simply provide the television. All campus communities have laundry facilities for student use and parking near where you live.

Campus Housing is divided into five communities:

1. Residence Halls

Newman, Governors, O'Bannon, and Ruston halls are located to the east of University Boulevard, across from the academic buildings and adjacent to the Recreation, Fitness, and Wellness Center (RFWC) and Rice Library.

2. O'Daniel South

This group of 10 apartment buildings is on the northeast side of campus, near the Office of Religious Life and OSCARS (Office of Student Conduct and Resolution Services).

3. O'Daniel North

Within this area of 11 apartment buildings is the Housing and Residence Life central office, mail center, and computer lab.

4. McDonald East

These apartments offer easy access to Schutte Road or the main campus. Fraternity and sorority housing is located in McDonald East.

5. McDonald West

This community has nine apartment buildings and a Residence Life Community Center, which includes a large laundry facility, open community space, fireplace, and convenience store.

Housing and Residence Life Staff

Each community has a full-time, live-in professional area coordinator (AC), experienced in working with students, and with an educational background that includes higher education, counseling, or human services. Area coordinators select and train the student staff, provide on-site facilities management, and ensure that programs and activities in your community support your involvement and connection to USI.

Your primary connection is your resident assistant (RA). An RA is a student-staff member selected for leadership skills, an ability to reach out to peers, and a capacity to connect students to the resources they need to be successful.

Resources

Living on campus puts you close to USI resources including Rice Library, Recreation, Fitness, and Wellness Center, athletic events, activities, professors, support services, and food service options, which are within walking distance for students. Shuttle buses serve all areas of campus housing. By living on campus, you will benefit from being "in the know" about everything USI.

Involvement

As you interact with others to form friendships, develop community, and schedule activities that you and your friends enjoy, you will be energized by the diversity of fellow students represented in the communities. You won't be disappointed when you look for ways to get involved.

Technology

USI Housing and Residence Life offers you two ways to get the Internet connection you need. Direct Ethernet connections and wireless access allow you to stay in touch with family, friends, and new neighbors. This access also connects you to USI's powerful web site (www.usi.edu) and to the myUSI information portal.

Healthy Atmosphere

Students living in housing are required to have all immunizations up to date prior to moving into University housing. The immunization form is included in the Admitted Student Packet sent by the Office of Admission and must be completed and submitted to the Student Health Center, 812/465-1250. Resident assistants and various departments offer programs on health, nutrition, and fitness throughout the academic year.

CAMPUS LIVING: OPTIONS



How do I choose where to live?

- Visit the USI campus. Contact the USI Office of Admission at 812/464-1765 or toll-free at 800/467-1965 to arrange a campus visit or to register for a Southern Hospitality Day (campus visit days). Or, visit us on the web—www.usi.edu/admissn/visit.asp.
 - Take a USI Virtual Tour—www.usi.edu/virtualtour/index.asp.
 - Carefully read the room descriptions in this brochure.
 - Remember, residence halls are for first-year students only and they fill up quickly.
- If you have questions, contact us at living@usi.edu or by telephone at 812/468-2000.

Smoke-free

All University of Southern Indiana buildings and rooms are smoke-free, including campus housing.

Substance-free

USI is committed to keeping all campus areas substance-free, which means that alcohol and drugs are not allowed in campus housing. A substance-free environment helps support academic success for USI students.

Private Bedrooms

Private bedrooms are available to students at a higher cost. These rooms are for one person and include a double bed, a private bathroom, and additional amenities. These rooms are available on a first-come, first-served basis.

Quad Rooms

USI apartments and residence hall suites are designed for four people. Each has two bedrooms, two people to a bedroom. This is the most typical room configuration and the one selected by most of our students.

Living Learning Communities

First-year students may apply to be a part of our dynamic and interactive Living Learning Communities (LLCs), located in Ruston and O'Bannon halls. LLCs are programs designed to link the in-class and out-of-classroom experiences and help students make a smooth and successful transition to college life. A separate application is required. Details about the LLC program can be found on pages 7–8.

“Residence Life is dedicated to making USI a safe and fun place for students to live and go to school. They do a great job making Southern Indiana a home away from home for me and countless others.”



BJ Devine
History major
Montecello, NY
Cross country

LIVING LEARNING COMMUNITIES



Living Learning Community (LLC) students are immersed in a true living and learning environment. Residents live in close proximity to other students who share the same major or interest and attend classes together. Students select from 11 LLC options: Business; Elementary Education, Early Childhood, and Special Education; Emerging Leaders; Exploring Majors; Global Community, Honors; Liberal Arts; Nursing and Health Professions; Social Work; STEM (science, technology, engineering, and mathematics); and Sophomore Year. Different University departments sponsor each floor or apartment community and assist in organizing programs, activities, and events highlighting various themes. Student staff members, Resident Assistants (RAs), are tied to an academic major or theme and many have been a part of the LLC. Each LLC has a distinct culture and personality. All but the Sophomore Year have common courses. A one-hour pro seminar taught by sponsoring faculty creates a shared experience for students, enhancing positive bonds both in and out of the classroom. Students participating in LLCs have a higher GPA than those who do not participate in the program.

LLCs provide many advantages:

- Living with students of the same major or interest
- Common courses through seminar or block scheduling
- Built-in academic support through formal or informal study groups
- Programming around a central theme
- Link to sponsoring faculty and staff

For more information on any of the LLCs, contact Amy Price, Associate Director of Housing and Residence Life, asprice@usi.edu, call 812/468-2000, or go to www.usi.edu/reslife/????

Students can select from 11 LLC options:

- Business Living Learning Community
- Education Living Learning Community
- Emerging Leaders Community
- Exploring Majors Living Learning Community
- Global Community
- Honors Community
- Liberal Arts Learning Community
- Nursing and Health Professions
- Social Work Community
- STEM (science, technology, engineering, mathematics)
- Sophomore Year

“Living on campus has allowed me to really connect with other students and be involved with lots of diverse student organizations.”



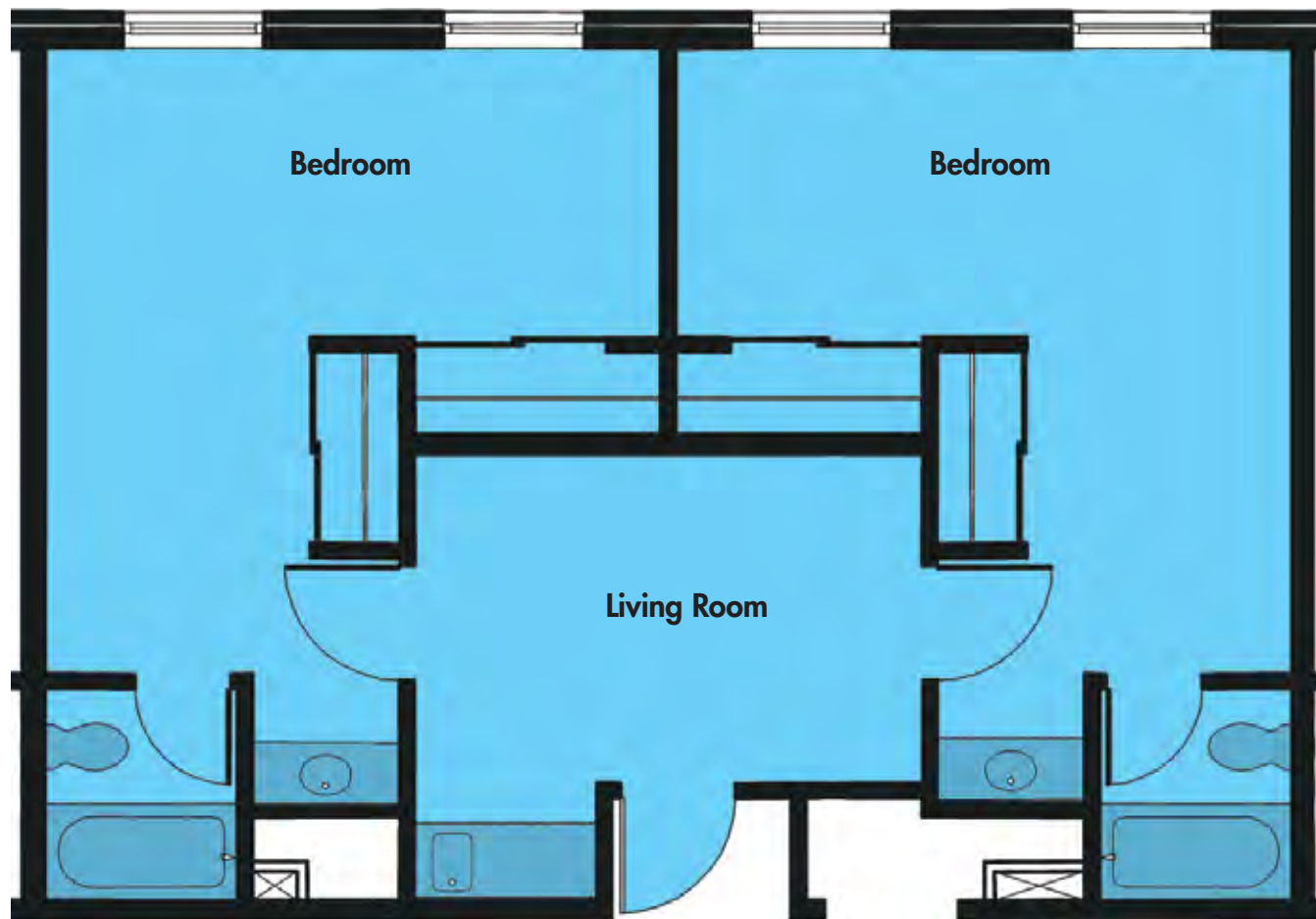
Kaitie Webster
English education
Newburgh, IN
Student Housing
Association

COMMUNITIES AND ROOMS



Newman Hall, Governors Hall, O'Bannon Hall, and Ruston Hall

Newman and Governors halls accommodate over 340 residents; O'Bannon and Ruston halls over 400. Men and women reside in separate suites. All four halls are freshman-only. Newman and Governors halls are in close proximity to the Recreation, Fitness, and Wellness Center and directly across the boulevard from Rice Library. O'Bannon and Ruston halls are near the Screaming Eagles Valley Complex and the Art Studio. Ruston and O'Bannon halls house first-year Living Learning Communities. Halls are available on a first-come, first-served basis, and tend to be a popular option for students



Newman Hall, Governors Hall, O'Bannon Hall, and Ruston Hall Floorplan

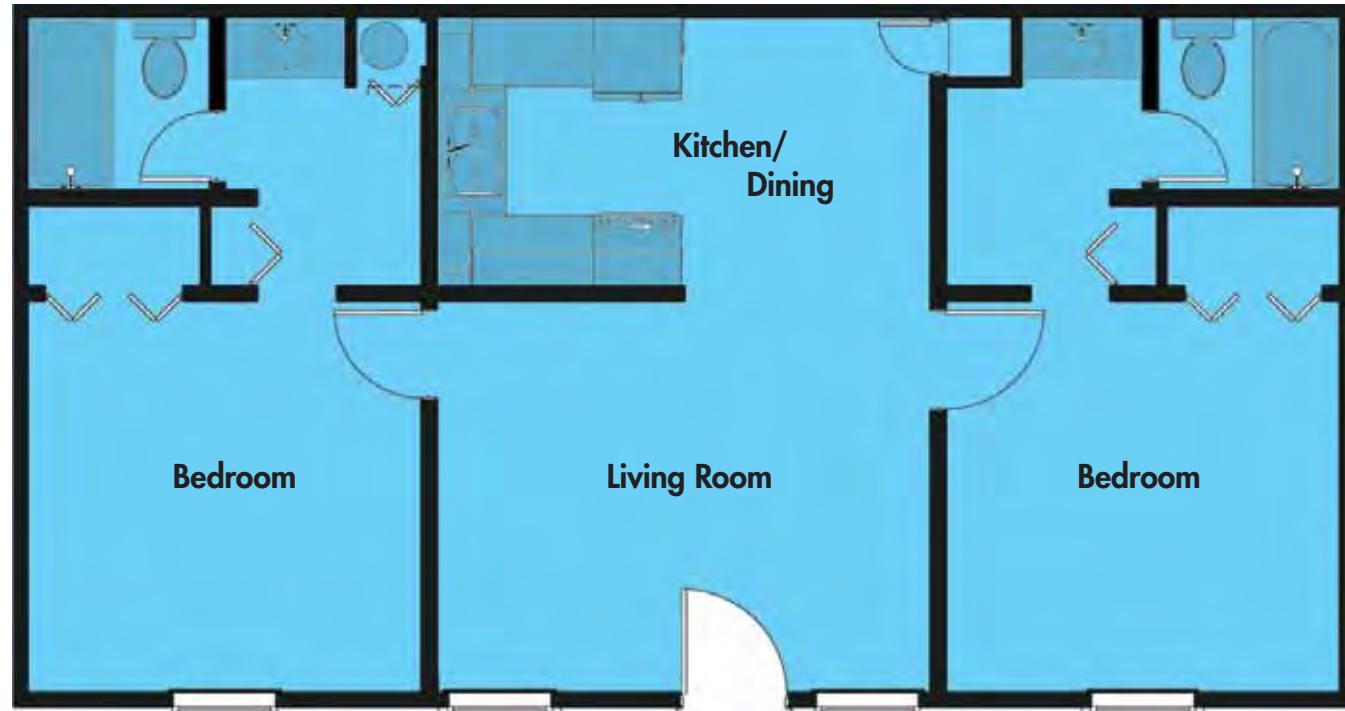
- freshman-only buildings
- interior hallways
- suite-style layout
- two bathrooms in each two-bedroom suite
- large first-floor lounge in each hall
- additional lounge space on second and third floors (O'Bannon and Ruston halls)
- vending machines in each building
- laundry room
- computer labs on each wing
- living area includes couch, chair, and mini-kitchen area with sink, under-the-counter refrigerator (provided), and storage cabinets
- bedrooms have desks, chairs, and bunk/loft beds
- carpeting
- 695 square feet in two-bedroom suites
- overhead lighting
- ample outlets for individual lamps (not halogen)
- individual temperature controls by suite
- four people per suite, two per bedroom, except in the one-bedroom studios
- all halls have six computer labs; rooms are equipped with Ethernet connections and wireless Internet access

“The best part of living on campus is the sense of community that develops throughout the year.”

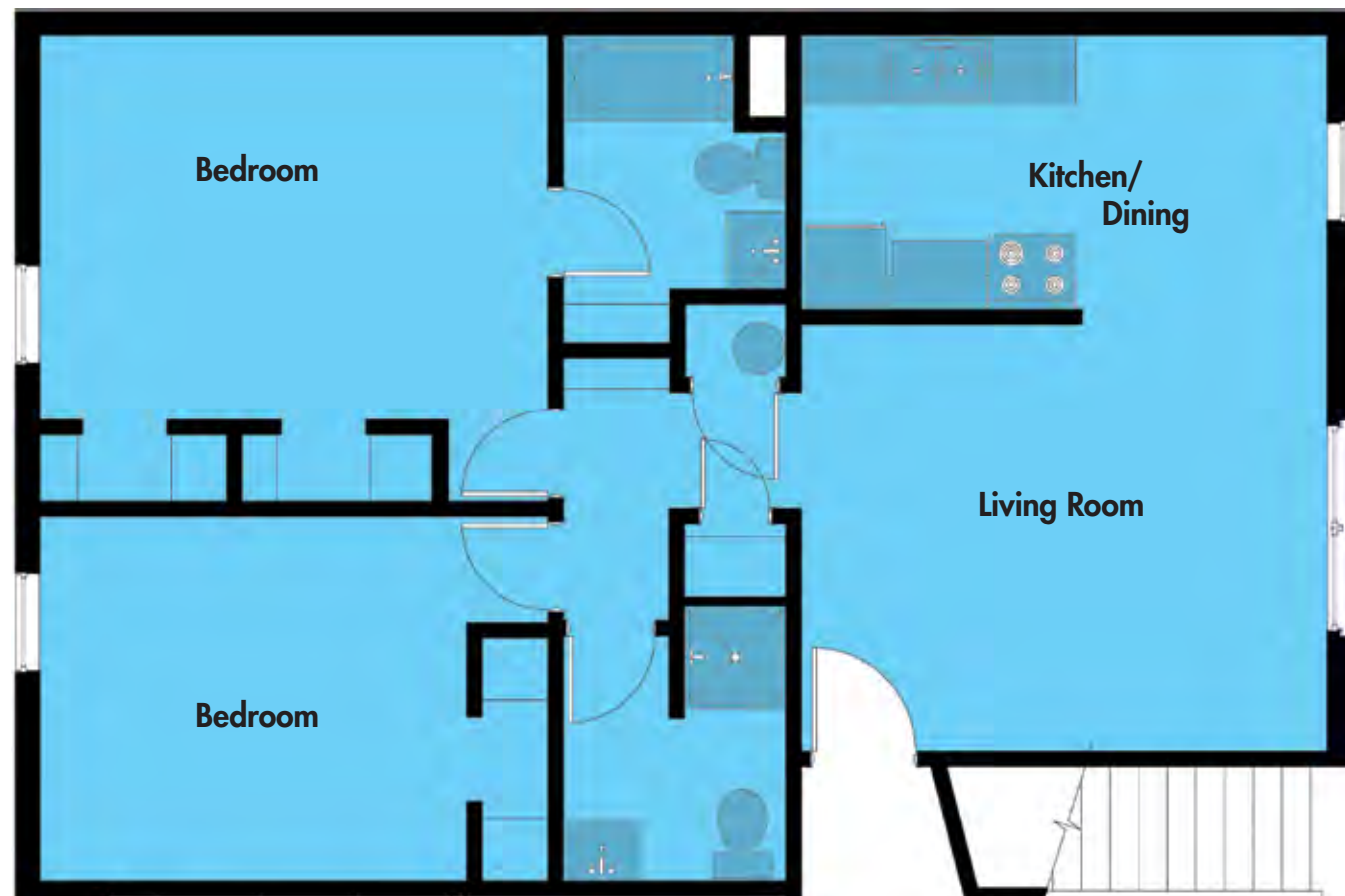


Kurtis Kelley
Evansville
Sociology

COMMUNITIES AND ROOMS



O'Daniel North, South, and McDonald West Floorplan



McDonald East Floorplan

O'Daniel South and O'Daniel North Communities

O'Daniel South Apartment Community is home to over 650 residents and is the largest housing community. O'Daniel North Apartment Community is home to over 600 residents. Both communities house first-year to fourth-year students and are home to many campus activities. Men and women are housed in separate apartment units. O'Daniel South also is home to USI's Office of Religious Life, the O'Daniel South volleyball court, Office of Student Conduct and Resolution Services (OSCARS), and Meditation Trail. O'Daniel North is home to the USI Housing and Residence Life Office (HRL), the mailroom for O'Daniel South and O'Daniel North residents, and the HRL apartment area computer lab.

McDonald West and McDonald East Communities

McDonald West Apartment Community, housing over 550 first-year to senior-level residents, is home to the Residence Life Community Center, which includes a large meeting space, laundry room, a basketball court, and sand volleyball courts. The McDonald East Apartment Community, where mostly junior, senior, and graduate students reside, is home to 360 residents and includes four buildings for Greek organizations. Both communities house men and women in separate apartment units.

- O'Daniel South consists of 10 apartment buildings; O'Daniel North consists of 11, and all floors have exterior door entrances and a split bedroom layout
- within both complexes there are a limited number of apartment buildings that are reserved for freshman residents
- McDonald West consists of nine apartment buildings; McDonald East includes 13 apartment buildings
- McDonald West apartment buildings offer exterior door entrances and a split bedroom layout
- McDonald East apartment buildings have interior door entrances
- each bedroom has accompanying private bathroom
- each apartment is equipped with full kitchen, including range and oven, full-sized refrigerator/freezer, sink, garbage disposal, and cabinets (some McDonald East apartments are equipped with dishwasher)
- vending machines available throughout the complexes
- large laundry room in O'Daniel South, additional laundry facilities available in each apartment building in McDonald East community; a large laundry room is located in Residence Life Community Center
- O'Daniel North offers access to lounge areas in Residence Life center, with computer lab access
- living areas include couch, chair, end table, and coffee table
- dining areas equipped with dining table and four chairs
- bedrooms include two desks, two chairs, nightstand, two twin beds with mattresses, and two dressers
- limited number of single-occupancy bedrooms that have a double bed
- carpet
- 700 square feet
- overhead lighting
- ample outlets for individual lamps (not halogen)
- bedrooms equipped with Ethernet connections and wireless Internet access
- two air conditioning units—individually controlled (McDonald East provides central air conditioning)
- four people per apartment, two per bedroom

FOOD SERVICE OPERATIONS

Which Meal Plan is Right for Me?

Take a look at the variety of options below to choose a meal plan that is right for you. For more information go to www.usifood.com or call 812/464-1859.

Not interested in a meal plan, but still want to dine on-campus in a convenient way? Try Munch Money, our pre-paid account for food service. Munch Money, when added to the Eagle Access Card, will be granted an additional five to ten percent bonus to be used in food service operations.



Located in University Center

For a relaxing dining experience, visit The Loft, located on the second floor of the University Center. The Loft features a theme bar, fresh salad bar, soups, pizza and pasta station, vegan and vegetarian options, and Charleston Market, offering a selection of hot entrees, rotisserie meats, potatoes, and a variety of vegetables for lunch and dinner. The Loft also offers an all-you-can-eat breakfast buffet each weekday morning and brunch on the weekends to complete your meal plan buffet options.

Also located in UC



In two locations: the Link between Health Professions Center and the Science Center and in the Liberal Arts Center



Located in Rice Library



Starbucks and the Starbucks logo are registered trademarks of Starbucks US Brands, LLC

Located in the Residence Life Community Center



The EagleXpress Convenience Store is packed with many popular household and grocery items to meet your needs. You also can enjoy an old-fashioned pizza pie from Archie's Pizzeria EagleXpress location.

DINING WITH A PLAN If you live in residence halls, these plans were created just for you.

RED EAGLE PLAN | \$1,680

- 12 buffet meals per week in The Loft
- \$480 dining dollars per semester (for students who prefer to eat every day of the week in The Loft—buffet, breakfast, or dinner—and flexibility for retail dining at their leisure)

WHITE EAGLE PLAN | \$1,680

- 11 buffet meals per week in The Loft
- \$525 dining dollars per semester (for students who prefer to eat most of their meals in The Loft—buffet, breakfast, or dinner—and flexibility for retail dining)

BLUE EAGLE PLAN | \$1,680

- Nine buffet meals per week in The Loft
- \$590 dining dollars per semester (for students who prefer the most flexibility for choosing where and when they eat)

RED EAGLE PLAN | WHITE EAGLE PLAN | BLUE EAGLE PLAN

Plan meals allow you to choose from breakfast Monday–Friday, brunch Saturday–Sunday, and dinner each evening in The Loft. Meals can be exchanged from a select menu at Burger King, Sub Connection, Cyclone Salads, Salsa Rico, and Archie's Pizzeria in the Eagle Express Convenience Store beginning at 3 p.m. each day.

If you live in on-campus apartments or commute from home, these plans are right for you.

TITANIUM | \$1,129

- 70 buffet meals per semester
- \$640 Munch Money plus 10 percent additional funds bonus (for students who would enjoy an average of four Loft buffets per week and also retail options)

PLATINUM | \$849

- 50 buffet meals per semester
- \$465 Munch Money plus eight percent additional funds bonus (for students who would enjoy an average of three Loft buffets per week and also retail options)

GOLD | \$639

- 32 buffet meals per semester
- \$386 Munch Money plus seven percent additional funds bonus (for students who enjoy eating their meals at home with an occasional meal each week with us)

PLEASE NOTE

- Meal plan participants must present a valid USI Eagle Access Card or pay the posted casual meal rate to be admitted to The Loft.
- Meal plans and Munch Money may not be transferred to another student. If it is discovered that a person is using a "borrowed" Eagle Access Card, Food Services will confiscate the card and the student(s) will be referred to the University for violations of the USI Student Rights and Responsibilities: A Code of Student Behavior.
- Meal plans officially begin on August 20, 2011, and end on May 2, 2012. Meal plans are not in operation during holiday break periods.

HOW TO APPLY AND TIMELINE

How to Apply

STEP 1: Apply for housing at <http://rmsweb.usi.edu>. A \$50 non-refundable application fee will be required at time of application. Meal plan preferences must be made on the housing application. Any changes or questions regarding meal plan, go to www.usifood.com or call 812/464-1859.

STEP 2: Sign your housing contract electronically when offered at <http://rmsweb.usi.edu>. Contracts will be offered on a first-come, first-served basis, and will be offered through the student's USI email. All students will be required to pay a \$200 pre-payment to the student's account. Pre-payments must be made online by credit card at the time the contract is electronically signed. Remember, your contract cannot be accepted until the pre-payment has been made.

STEP 3: Select your bed space during your assigned appointment time at <http://rmsweb.usi.edu>. Appointment times will be sent via USI email and are scheduled in contract-received order. The self assign option will take place during the first two weeks in June. Contracts are for the full academic year.

Contact our office at 812/468-2000 or by email at living@usi.edu to request a contract booklet (only available for students who have been admitted to USI).

NOTE: This contract is an academic-year contract and is binding from the receipt of your contract and \$200 pre-payment on your housing charges through Wednesday, May 2, 2012.

Application and Assignment Timeline

2011

MARCH

1 – Priority Deadline for Living Learning Community application – Living Learning Community applications received after this date will be evaluated, and students accepted after this deadline will be placed on a waiting list.

charged \$18/day prior to the official opening date. Students must keep their apartment or residence hall suite clean during this interim period. Rooms that are dirty on the dates of official move-in will be charged a \$150 cleaning fee. Students who refuse to allow someone to move in may face disciplinary action.

JUNE

1-14 – Select your bed space during your assigned appointment time at <http://rmsweb.usi.edu>.

18 – University housing official check-in for Welcome Week participants

JULY

15 – Notification to students who self-assigned – Assignments and roommate information will be sent on July 15 through USI email.

19-21 – University housing official check-in for remaining residents

AUGUST

1 – Move-in information will be emailed to all assigned students. This mailing includes move-in dates and times, as well as information about important University services.

22 4 p.m. – Last date to check in before cancellation of contract and application of no-show fee – Room assignments will be held no later than 4 p.m. on the first day of class. If you anticipate arriving after classes begin, you must submit a written request to Housing and Residence Life and receive approval prior to August 22, 2011. Late check-ins that are not approved by Housing and Residence Life may result in a room assignment change or contract cancellation.

1 – Last day to apply for early arrival (\$18/night charge applies) – If you need to arrive earlier than the official opening date, you must request advanced approval in writing from the Housing and Residence Life Center by August 1, 2011. You must fill out the online form at www.usi.edu/res. Students must have a valid University-related reason for early check in. Those without Housing and Residence Life approval will not be allowed to check in early.

22 – First day of fall semester

15 – First day students can move in early – Services normally offered will not be available prior to the August 18, 2011, move-in date. Students approved to arrive early will be

SEPTEMBER

13 – Fall consolidation begins – During this time, students living in Housing and Residence Life apartments or suites that are not full are moved to new locations to maintain full occupancy. This is done to allow housing to begin rehabilitating apartments for the next semester, to discontinue the use of electricity to the newly vacated locations, and to keep living arrangements equitable.

NOVEMBER

29 – Sign-up for winter break extension begins*

DECEMBER

1 – Housing Applications/Contracts 2012-2013 are available

10 – Last day to sign up for winter break extension with no penalty

11 – Sign-up for winter break extension with \$50 penalty*

17 – University housing closes for winter break

2012

JANUARY

6 – University housing opens for spring 2012 semester

9 – First day of spring semester

24 – Spring consolidation begins – During this time, students living in Housing and Residence Life apartments or suites that are not full are moved to new locations to maintain full occupancy. This is done to allow housing to begin rehabilitating apartments for the next semester, to discontinue the use of electricity to the newly vacated locations, and to keep living arrangements equitable.

FEBRUARY

20-24 – Room selection for returning students for 2012-2013 academic year – Current residents can reserve their rooms for the 2012-2013 academic year. Returning students who renew during this period are given the opportunity to select their room first.

APRIL

2 – Sign-up for summer housing begins

25 – Last day to sign up for summer housing with no penalty

26 – Sign-up for summer housing with \$50 penalty begins

MAY

2 – Last day of spring 2011 semester

2 – University housing closes—all residents must check out by 4 p.m.

* Residents from Vanderburgh (IN), Henderson (KY), White (IL), Gallatin (IL), Posey (IN), Gibson (IN), and Warrick (IN) counties may not sign up for winter break extension.



WINTER, SUMMER, AND DISABILITY HOUSING



Winter Break Housing

For safety and security reasons, and because the University is officially closed during a portion of the winter holiday period, University apartments and residence halls are closed from December 16, 2011, through January 6, 2012. The Residence Life Center is closed and mail service is held from December 21, 2011, through January 3, 2012.

Students wishing to stay during the winter break period must sign up by Friday, December 9, 2011 (online or at the Housing and Residence Life Center), and provide a compelling reason for needing to remain in housing during the break period. Approvals have included requests such as involvement in University-sponsored events, international residency, etc. **Residents with permanent addresses in Vanderburgh (IN), Warrick (IN), Henderson (KY), White (IL), Gallatin (IL), Posey (IN), or Gibson (IN) counties are not eligible to stay for the winter break.**

Students who apply for a winter break extension after December 9, 2011, will be charged \$50. Students who are discovered living on campus without authorization during the winter break will be charged \$300 and face disciplinary action.

Summer Housing

University housing is available during the summer terms. Students wishing to reside in summer housing must do the following:

- Be enrolled in at least three hours each summer session and maintain this enrollment
- Fill out a Summer Housing and Residence Life Contract (available April 2, 2012)
- Adhere to all policies and procedures as outlined in the 2011-2012 Housing/Food Services Booklet
- Relocate to the designated summer housing area

Accommodations for students with disabilities

Housing and Residence Life is committed to providing access and opportunity for all students. The University complies with the Americans with Disabilities Act and will attempt to provide reasonable accommodations for individuals with disabilities. Room and roommate assignments can be modified at the discretion of the director.

In order for USI to serve you better, please do the following:

1. Indicate any special services you need on the Housing/Food Services Contract.
2. Students with a documented disability are asked to contact the USI Counseling Center, 8600 University Boulevard, Evansville, IN, 47712, or by telephone at 812/464-1867, in addition to submitting this contract and deposit.

While USI will make every effort to provide what is needed, requests for accommodations cannot be assured for students applying less than 60 days prior to the beginning of the term for which the accommodations are needed.

The University of Southern Indiana does not discriminate on the basis of race, sex, religion, disability, age, national origin, sexual orientation, or status as a disabled veteran or veteran of the Vietnam era. Requests based on these discriminatory factors will not be honored.

LATE APPLICANTS, PAYMENTS, AND CONTRACTS



Late Applicants

Later applicants are placed in pending status. While students placed in pending status may have a housing spot, some students may start the year in a temporary assignment.* Placement is made when space is available.

*Temporary assignment: Some students may start the year in a temporary placement, which will have the full array of amenities and services. Permanent assignments open up as the year begins, and most students are permanently placed in the first few weeks of the fall semester.

Payments

Payments for room and meal plan are placed on your overall University bill and are due when tuition and other charges are due. Housing and meal plan charges will be listed separately on your bill. Housing pre-payments of \$200 are due at the time you sign your housing contract or the contract will be inactive.

Contracts

Read the contract terms and conditions carefully before electronically signing the contract. The contract terms and conditions are available at www.usi.edu/res/current/onlineforms.asp. If you have questions before you sign, contact us at 812/468-2000, living@usi.edu, or www.usi.edu/res.

Contracts are for the full academic year and any cancellations will result in the charges listed in the terms and conditions.

All students living in University housing sign a contract for the academic year

If you leave your residence before the end of the academic year in May 2012, you will be charged a contract breakage fee. If circumstances beyond your control require you to break your contract, you may appeal the contract breakage fee.

Contract Cancellation Schedule

- From contract signature date to August 15, 2011: charged 50 percent of Fall 2011 housing charges AND charged 50 percent of Spring 2012 housing charges
- From August 15, 2011 to September 11, 2011 (first two weeks of class) and no-shows: charged 75 percent of Fall 2011 housing charges AND charged 50 percent of Spring 2012 housing charges
- After the first two weeks of class: charged 100 percent of Fall 2011 housing charges AND charged 50 percent of Spring 2012 housing charges

- Spring 2011 no-shows and those checking out during first two weeks of class: charged 75 percent of Spring 2012 housing charges
- Beginning third week of Spring 2012 classes: charged 100 percent of Spring 2012 housing charges

Rates

The USI Board of Trustees and University administration reserve the right to change room and board rates at any time. Changes in housing/food services rates will not be considered grounds for contract termination.

See the food service section on page 13 for meal plan rates. All students with a USI on-campus contract will automatically be given \$50 of Munch Money which is included in the room rate.

Housing rates per semester per student (contracts are for a full academic year):

Residence Halls – Two Bedroom Unit

Four-person/two-bedroom suite \$1,920/semester

Campus Apartments – Two Bedroom Unit

Four-person/two-bedroom apartment \$1,920/semester
Two-person/two-bedroom apartment \$3,405/semester (limited availability)

Campus Apartments – One Bedroom Unit (limited availability)

Two-person/one-bedroom apartment \$2,308/semester
One-person/one-bedroom apartment \$4,245/semester (limited availability)

Note: In the event of a housing shortage, Housing and Residence Life reserves the right to place students in a temporary assignment. Once a permanent space is available, the resident will be required to move.

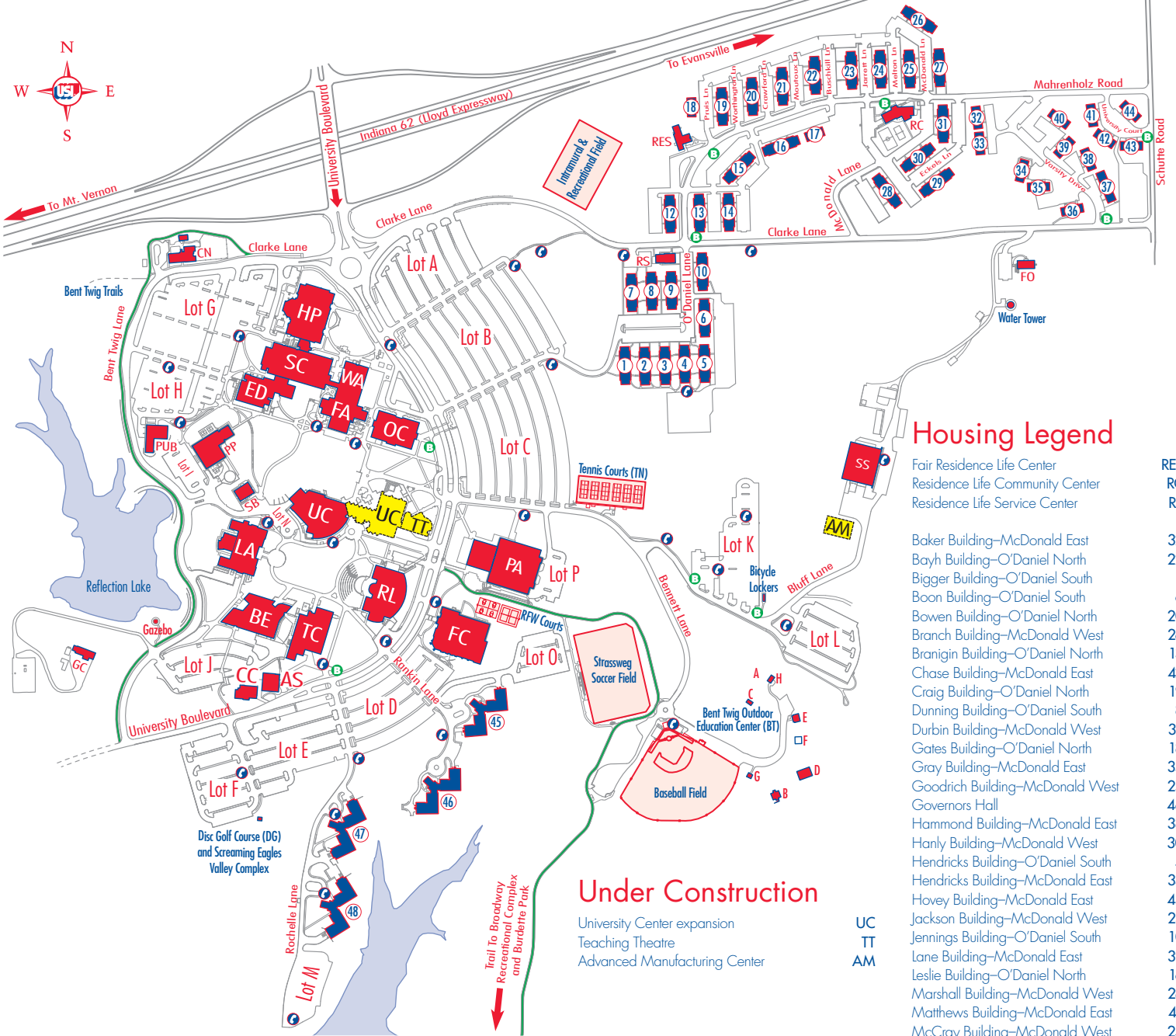
Questions?

Call 812/468-2000,
visit www.usi.edu/res,
or email living@usi.edu.

Under FERPA (Family Educational Right to Privacy Act), the University may disclose to parents information from the educational record of a student who is "dependent" under federal tax laws without the student's consent.



University of Southern Indiana
 Housing and Residence Life
 8600 University Boulevard
 Evansville, Indiana 47712
 www.usi.edu



Housing Legend

Fair Residence Life Center	RES
Residence Life Community Center	RC
Residence Life Service Center	RS
Baker Building—McDonald East	32
Bayh Building—O'Daniel North	22
Bigger Building—O'Daniel South	1
Boon Building—O'Daniel South	6
Bowen Building—O'Daniel North	20
Branch Building—McDonald West	26
Branigin Building—O'Daniel North	13
Chase Building—McDonald East	42
Craig Building—O'Daniel North	19
Dunning Building—O'Daniel South	8
Durbin Building—McDonald West	31
Gates Building—O'Daniel North	18
Gray Building—McDonald East	35
Goodrich Building—McDonald West	25
Governors Hall	46
Hammond Building—McDonald East	38
Hanly Building—McDonald West	30
Hendricks Building—O'Daniel South	5
Hendricks Building—McDonald East	33
Hovey Building—McDonald East	43
Jackson Building—McDonald West	23
Jennings Building—O'Daniel South	10
Lane Building—McDonald East	39
Leslie Building—O'Daniel North	16
Marshall Building—McDonald West	28
Matthews Building—McDonald East	41
McCray Building—McDonald West	24
McNutt Building—O'Daniel North	15
Morton Building—McDonald East	40
Mout Building—McDonald East	44
Newman Hall	45
Noble Building—O'Daniel South	3
O'Bannon Hall	47
Orr Building—O'Daniel North	21
Porter Building—McDonald East	36
Ralston Building—McDonald West	27
Ray Building—O'Daniel South	4
Ruston Hall	48
Saletta Building—McDonald West	29
Schricker Building—O'Daniel North	12
Townsend Building—O'Daniel North	14
Wallace Building—O'Daniel South	2
Welsh Building—O'Daniel North	17
Whitcomb Building—O'Daniel South	7
Willard Building—McDonald East	37
Williams Building—McDonald East	34
Wright Building—O'Daniel South	9

Under Construction

- University Center expansion UC
- Teaching Theatre TT
- Advanced Manufacturing Center AM

Campus Legend

- Art Studio
- Bent Twig Outdoor Education Center
 - A. Amphitheatre
 - B. Bokelman #3 School
 - C. Breckinridge Cabin
 - D. Eicher Barn
 - E. Grimes Haus
 - F. Herb Garden
 - G. Restrooms
 - H. Westwood Lodge
- Business and Engineering Center
- Carter Hall (UC 233)
- Ceramic Center
- Children's Learning Center
- Couch/Renner Hall (ED 1101)
- Education Center
- Forum Lecture Halls (FA 1, 2, and 3)

- AS USI Foundation
- BT Health Professions Center
- I.U. School of Medicine—Evansville (HP 3026)
- Kleymeyer Hall (LA 0101)
- Liberal Arts Center
- Mallette Studio Theatre (LA 0105)
- McCutchan Art Center/Pace Galleries (LA 0155)
- Mitchell Auditorium (HP 1002)
- Robert D. Orr Center
- UC Physical Activities Center (PAC)
- CC Physical Plant Service Center
- CN Publishing Services Center
- ED Recreation, Fitness, and Wellness Center
- ED Fair Residence Life Center
- FA Residence Life Community Center

- FA David L. Rice Library
- FO Security Building
- GC Science Center
- HP Support Services Building
- HP Technology Center
- HP University Center
- LA Byron C. Wright Administration Building
- LA
- LA
- LA
- LA
- HP
- OC The off-campus recreational and varsity softball fields can be reached by traveling south on Schutte Road, then west on Broadway 1/4 mile; see map inset.
- PA
- PP
- PUB
- RES
- RC
- RL
- SB
- SC
- SS
- TC
- UC
- WA

- Bicycle Path
- Blue Emergency Phone
- Bus Stop