

GRADUATE STUDIES & SPONSORED RESEARCH

ANNUAL REPORT

JULY 2002



GRADUATE STUDIES & SPONSORED RESEARCH

ANNUAL REPORT

Prepared By

Graduate Studies & Sponsored Research Staff

with support from

*Jennifer Anderson, Development
Karen Bonnell, Distance Education
Sandra Farmer, Registrar
Charles Harrington, Academic Affairs
Debra Laster, Institutional Research
Terry Martin, Education & Human Services
Mary Ann McCulloch, Academic Affairs
Saxon Reasons, Instructional Technology
Timothy Schibik, Center for Teaching & Learning Excellence
Mary Alice Weigand, Academic Affairs*

Graduate Studies & Sponsored Research Office

*Peggy F. Harrel, Director
Beverly Thomas, Administrative Assistant, Graduate Studies
Heather Dragoo, Senior Administrative Assistant, Sponsored Research
Nathaniel Rivers, Student Worker
Ron Pitman, Student Worker*

Special thanks to all faculty members and students committed to striving for Excellence in Research and Scholarship.

GRADUATE STUDIES & SPONSORED RESEARCH

TABLE OF CONTENTS

4	INTRODUCTION
4	HISTORY
5	SPONSORED RESEARCH SERVICES
6	SRO CHART AND TABLE
7	GRANT PROPOSALS SUBMITTED & AWARDED 1989-2002
8	GRANT ACTIVITY FY02
9	SPONSORED RESEARCH ACTIVITY
10	2001-2002 USI GRANT AWARDS
10	EXTRAMURAL GRANT AWARDS
11	INTRAMURAL GRANT AWARDS
13	STUDENT GRANT AWARDS
15	HUMAN SUBJECT RESEARCH PROJECTS FOR 2001-2002
16	FACULTY IRB SUBMISSIONS CHART
17	STUDENT IRB SUBMISSIONS CHART
18	2001-2002 USI HUMAN RESEARCH PROJECTS
18	FACULTY & STUDENT RESEARCH
25	GRADUATE STUDIES SERVICES
25	GRADUATE STUDIES ACTIVITIES
27	GRADUATE ENROLLMENTS
28	GRADUATE ENROLLMENTS 1992-2002 CHART
29	SUMMER ENROLLMENTS BY TERM 1992-2002 CHART
30	FALL GRADUATE ENROLLMENTS 1992-2002 CHART
31	GRADUATE & FTE ENROLLMENT BY PROGRAM – SPRING TERMS
32	GRADUATE & FTE ENROLLMENT BY PROGRAM – SUMMER TERMS
33	GRADUATE & FTE ENROLLMENT BY PROGRAM – FALL TERMS
34	GRADUATE DEGREES CONFERRED BY PROGRAM 1992-2002
35	RECOGNITION & ACKNOWLEDGMENTS
36	COMMITTEES 2001-2002
37	GRADUATE STUDIES & SPONSORED RESEARCH STAFF

GRADUATE STUDIES & SPONSORED RESEARCH

INTRODUCTION

At USI, as at many universities that focus on teaching and learning, the value of faculty scholarly activity and research and creative work lies in the way they promote excellence in teaching and improve student learning. Through their continuing scholarly inquiry, faculty members often include new knowledge in their courses and the curriculum, and when faculty involve students in their research projects, these activities give students research experience and prepare them for further study. USI encourages scholarship and service in a variety of ways, including providing Foundation-supported intramural funding programs and administrative support through the Sponsored Research Office to faculty seeking extramural funding.

Graduate Studies and Sponsored Research comprises the Sponsored Research Office, the centralized administrative office for all pre-award grants activities for the University and the USI Foundation, and the Graduate Studies Office, the admission and administrative office for all graduate programs at USI.

HISTORY

The forerunner of the Graduate Studies Office was created in the 1980s as a centralized provider of information concerning opportunities for graduate education at institutions in the tri-state region. USI's first graduate degree program, the Master of Science in Industrial Management, was offered in 1984. The director of the Graduate Studies Office reported to the vice president for Academic Affairs. The Graduate Council, chaired by the director of Graduate Studies, was created to set policies and regulations governing graduate work.

University support for sponsored projects evolved in the 1980s as a part-time position within Extended Services. Activities included support for the writing of grant proposals and dissemination of information on external funding opportunities to faculty and staff. A budget officer in the Business Office administered post-award financial aspects of grants and contracts. In 1989 the Office of Grants and Sponsored Research was formally created under the Director of Graduate Studies, and a coordinator was hired. Financial administration had grown to include budget review and approval for proposals and post-award financial administration and grant reporting, which continued to be the responsibility of a budget officer in the Business Office.

Reorganization in 1992 combined the Office of Graduate Studies and the Office of Grants and Sponsored Research so that the director of the new Office of Graduate Studies and Sponsored Research reports directly to the Vice President for Academic Affairs. By 1994 the Special Funds Accountant in the Business Office assumed responsibility for financial administration of grants and

GRADUATE STUDIES & SPONSORED RESEARCH

contracts. In 2000 the Sponsored Research Office acquired an administrative assistant position, expanding the staff of the combined office of Graduate Studies and Sponsored Research to three, the director, the administrative assistant for Graduate Studies, and the administrative assistant for Sponsored Research, plus the invaluable support of two student workers. In 2001 signature authority for extramural grant proposals was assigned to the director of Graduate Studies and Sponsored Research. In the spring of 2002, the senior administrative assistant for Sponsored Research retired and Heather Dragoo was hired to fill the position.

SPONSORED RESEARCH SERVICES

USI's Office of Graduate Studies and Sponsored Research advises and assists faculty and staff to obtain external funding for instructional, research, and service projects and assists faculty with intramural grant proposals. The Office provides assistance in identifying funding sources, planning and developing projects, preparing proposals, obtaining administrative approval, and submitting proposals. The Director supports faculty development through individual and group instruction and workshops. The staff work with the Special Funds Accountant to provide continuous service on externally-funded projects.

Through the University's affiliation with American Association of State Colleges and Universities (AASCU), the Office has access to the Grants Resource Center (GRC) providing a national network of sources of possible support for project ideas. The Office makes available the GRC web-based database of funding sources, GrantSearch, as well as electronic publications listing deadlines of grant and contract opportunities appropriate for AASCU institutions.

The Office also subscribes to the web-based version of IRIS (the Illinois Researcher Information Service), a database of over 7,000 research funding opportunities, and IRIS's *Online Periodical Service (OPS)*, a full-text database of selected items from *Commerce Business Daily* and abstracts of research related items from the *Federal Register*. IRIS's Alert Service enables faculty to receive funding alerts automatically. The IRIS Expertise Service enables faculty to network with other members of the research community with similar research interests.

The Sponsored Research Office provides administrative support to the committee that protects the rights of human subjects of research, the Institutional Review Board (IRB), processing over 100 protocols per year from faculty and students, of which approximately 12 percent are reviewed by all committee members and discussed at the full board meetings, 20 percent are reviewed by a subcommittee under expedited review, and 68 percent are reviewed by the administrative assistant and the director to determine if they are exempt from committee review.

The USI Sponsored Research web page at <http://www.usi.edu/gr&res/ogsr.asp> contains information on and links to a

GRADUATE STUDIES & SPONSORED RESEARCH

variety of grant-writing and research and sponsored projects sites, including institutional data such as the federal employer identification number and the F&A (indirect cost) rate, as well as research policies such as the research integrity and financial interest disclosure policies. In addition, the Office maintains a library of funding source information in both paper copy and software form and posts notices and announcements on the Sponsored Research bulletin board in the Wright Administration building hallway.

The Director serves as *ex officio* member of the Faculty Academic Affairs Committee, among whose duties are to award the Faculty Research and Creative Work Awards, and chairs the USI Institutional Review Board (IRB) for the Protection of the Rights of Human Subjects in Research, the committee which approves all research involving human subjects conducted by members of USI's faculty, staff, or student body.

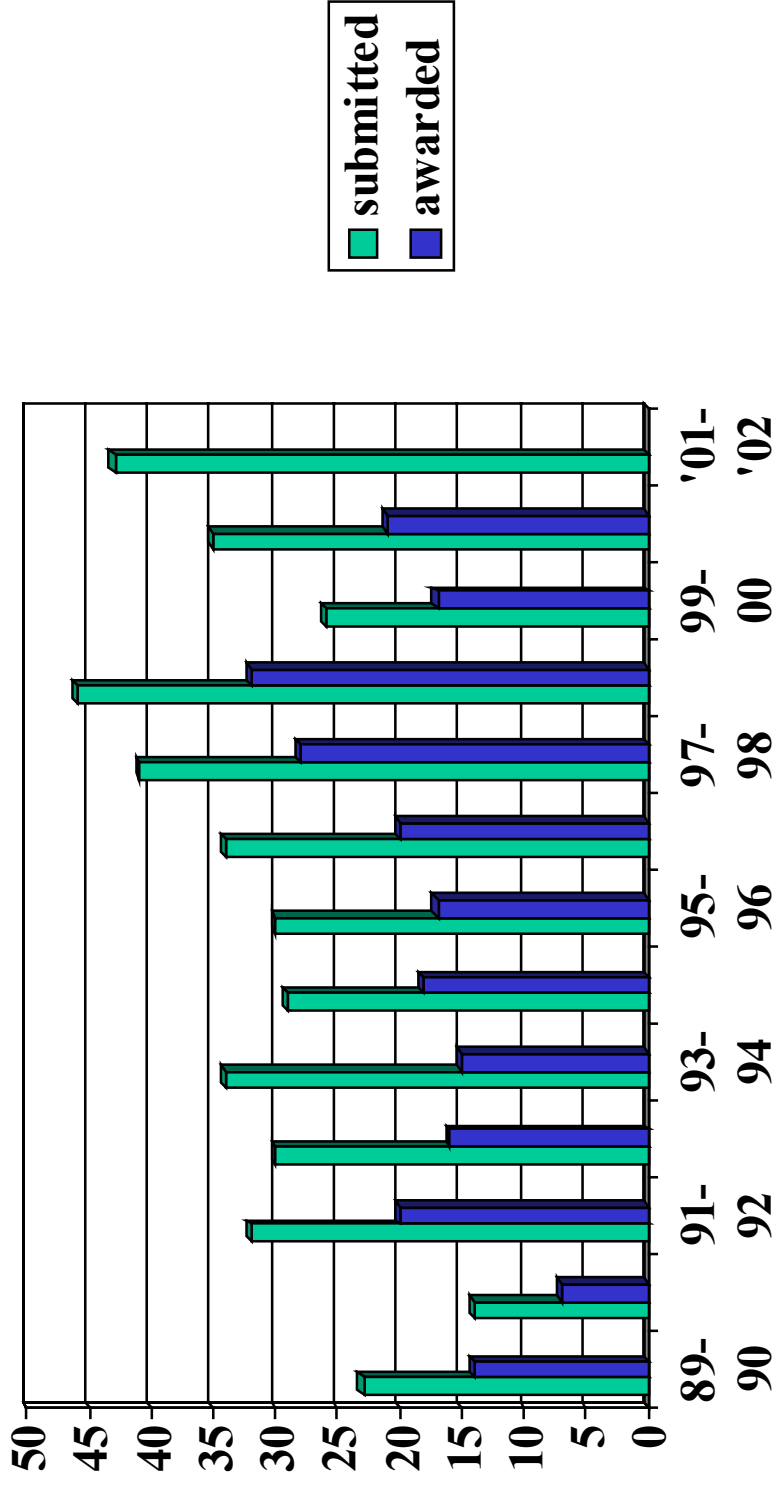
The Director maintains membership in the Council on Undergraduate Research (CUR), a national professional organization supporting the development of undergraduate research programs at primarily undergraduate institutions, the Indiana Forum for Research Administration (IFRA), the National Council for University Research Administrators (NCURA), and the Society of Research Administrators (SRA).

SRO CHART AND TABLES

Following are one chart and three tables of Sponsored Research Office activities. The chart depicts the number of grant proposals submitted and awarded from 1989 to June 30, 2002. (The number of projects awarded in 2002 will not be available until July 2003.) The tables list the number and amounts of grant proposals submitted since 1989, the number of proposals submitted and amounts awarded in FY02 by School or University area, and the resolution of the proposals that were pending at the end of FY01.

GRADUATE STUDIES & SPONSORED RESEARCH

GRANT PROPOSALS SUBMITTED & AWARDED 1989-2002



GRADUATE STUDIES & SPONSORED RESEARCH

GRANT ACTIVITY FY02

1. Number of Extramural Grant Proposals Completed & Annual Amounts Funded November 1989-June 2002

Fiscal Year	Amount Awarded	Number Submitted	Number Awarded	Not Funded	Number Pending	Amount Pending
1989/1990	\$ 379,892.00	23	14 (61%)	8 (35%)		
1990/1991	415,458.24	14	7 (50%)	5 (36%)		
1991/1992	281,551.12	32	20 (63%)	11 (34%)		
1992/1993	414,832.75	30	16 (53%)	14 (47%)		
1993/1994	340,692.05	34	15 (44%)	19 (56%)		
1994/1995	635,726.15	29	18 (63%)	11 (38%)		
1995/1996	732,311.00	30	17 (57%)	13 (43%)		
1996/1997	1,969,144.00	34	20 (59%)	14 (41%)		
1997/1998	1,960,744.00	41	28 (68%)	13 (32%)		
1998/1999	1,166,902.00	46	32 (70%)	14 (30%)		
1999/2000	540,975.00	26	17 (65%)	9 (35%)		
2000/2001	1,686,554.89	35	25 (71%)	10 (28%)		
2001/2002	840,480.28	43	18 (41%)	9 (20%)	16 (37%)	694,928.75
TOTAL	\$ 11,365,263.48					\$ 694,928.75

2. Number and Amounts of Extramural Grant Proposals Submitted and Awarded in July 2001-June 2002 by School or University Area

	Number Submitted	Number Awarded	Amount Awarded	Not Funded	Amount Not Funded	Number Pending	Amount Pending
Academic Affairs							
EHS	11	3	\$ 69,841.28	5	\$673,411.50	3	\$86,665.00
PSE	5	3	11,449.00	1	\$ 65,023.00	1	\$ 48,800.00
EHS/PSE	1	1	10,827.00	0		0	\$ -
LA	4	0	-	0		4	54,545.00
NHP*	11	5	488,392.00	3	285,888.00	3	404,785.00
ES**	6	5	242,471.00	0		1	77,750.00
SOB	1	0	-	0		1	7,880.00
Student Affairs	4	1	17,500.00	0		3	14,503.75
2002 Total	43	18	\$840,480.28	9	\$1,024,322.50	16	\$694,928.75

*NHP Amount Funded figure includes continuation funding for 3rd year of 3-year award submitted in '99-'00.

**ES Amount Funded figure includes continuation funding for 3rd year of 4-year grant submitted in '99-'00.

**ES Amount Funded figure includes an additional award for a grant submitted in '99-'00.

3. Pending from 2000-2001 Annual Report: Number and Amounts of Extramural Grants Submitted July 2000-June 2001 by School or University Area

Area	Submitted	Amount	Not Funded
LA	3	\$ 12,055.00	0
PSE	1	20,425.00	0
ES	1	50,000.00	1
2001 Total	5	\$ 82,480.00	1

GRADUATE STUDIES & SPONSORED RESEARCH

SPONSORED RESEARCH ACTIVITY

Following are lists of the extramural and intramural grant proposals by USI faculty and students submitted in FY02 and the human subject research protocols reviewed by the Sponsored Research Office and USI's IRB in FY 02. The members of the committees supporting the sponsored research activities are listed in the Recognition & Acknowledgments section.

2001-2002 USI GRANT AWARDS

EXTRAMURAL GRANT AWARDS

Includes grants awarded through federal, state, and foundation organizations.

University of Southern Indiana

Bandoli, James, Biology, \$579 from the Indiana Academy of Science's Research Grants Program for *Filial Cannibalism in the Spottail Darter: Do Males Recognize Sired Eggs?* (August 2001).

Coudret, Nadine & Vandever, Melissa, Nursing & Health Professions, \$42,332 from the Department of Health & Human Services Health Resources & Services Administration's Advanced Education Nursing Traineeship Program for *USI Advanced Education Nursing Traineeship Program* (November 2001).

Coudret, Nadine & White, Ann, Nursing & Health Professions, \$65,000 from the Welborn Foundation's Worksite Link to Health Program for the *Employee Lifestyle Program* (July 2001).

Enzler, David, Recreation, Fitness & Wellness, \$17,500 from Smokefree Indiana's College/University Grant Program for *Campus Free Tobacco Environment Initiative* (February 2002).

Halstead, Judith, Nursing & Health Professions, \$139,500 from the Welborn Foundation for *Breast and Cervical Cancer Screening Program for African-American Women* (July 2001).

Hart, Betty, English, \$1,000 from the Indiana Humanities Council (IHC) for *the Poetry of Our Lives* (May 2002).

Jones, Edward, Extended Services, \$50,000 from the Indiana Department of Commerce's Community Development Action Grant for *Creation of an Economic*

Development District (EDD) in Southwest Indiana (August 2001).

McCloud, Eric, Biology, \$9,710 from the Cuyahoga Valley National Park for *Inventory of Insects* (August 2001).

Phillips, Iris & Elpers, Kathy, Social Work, \$30,000 from the University of Washington's School of Social Work Geriatric Enrichment in Social Work Education for *Geriatric Enrichment Program* (November 2001).

Ramsden, Virginia, Extended Services, \$32,471 from the U.S. Department of Education's Child Care Access Means Parent in School Program (CAMPUS) for *Expanding Services for Student-Parents at USI* (May 1999).

Raske, Martha, Social Work, \$19,841.28 from the Indiana Higher Education Telecommunications System's IPSE Module Development Grant Program for *CEU Modules: School Social Work and Clinical Practice* (September 2001).

Shaw, Marlene, Biology, \$20,000 from the Indiana Academy of Science's Senior Research Grant Program for *Chick Cardiovascular Development: Endoglin 5'-End CDNA Cloning, Sequencing, and Analysis* (September 2001).

Sparks, Martha, Nursing & Health Professions, \$40,000 from the John A. Hartford Foundation's American Association of Colleges of Nursing Geriatric Nursing Education Project for *Enhancing Gerontology/Geriatric Nursing Education for Undergraduate Baccalaureate Program* (October 2001).

EXCELLENCE IN RESEARCH & SCHOLARSHIP

Slavkin, Michael, Teacher Education, **\$20,000** from the Indiana Higher Education Telecommunication System's IPSE Module Development Grant Program for *Educational Psychology Modules: Education 201* (September 2001).

Thomas, Jeff, Teacher Education, **\$10,827** from the Indiana Commission for Higher Education's Eisenhower Professional Development Program for *Using Wisconsin Fast Plants and Indiana Science Standards to Promote Authentic Science Learning* (September 2001).

Weinzapfel, Connie, Historic New Harmony, **\$25,000** from the Efroymsen Fund's Fund of Central Indiana Community Foundation for *Stabilization of Schnee-Ribeyre-Elliot House* (November 2001).

Weinzapfel, Connie, Historic New Harmony, **\$125,000** from the Lilly Endowment Inc. for *General Operating Support* (April 2002).

Weinzapfel, Connie & Harris, Rebecca, Historic New Harmony, **\$10,000** from the Indiana Department of National Resources Division of Historic Preservation and Archaeology's Wabash River Heritage Corridor Fund for *Door of Promise to the Wabash River* (April 2002).

USI Foundation

\$7,350 from the Alcoa Foundation for Presidential Scholarships.

Bonnell, Karen, Distance Education, **\$58,280** from the SBC Foundation (Ameritech) for *Institute for Online Teaching & Learning*.

\$30,000 from Mead Johnson (Bristol-Myers Squibb) for Presidential Scholarship & other scholarships.

\$1,000 from Toyota Motor Manufacturing Indiana for Kid's Day at Lincoln Amphitheatre.

INTRAMURAL GRANT AWARDS

Includes grants awarded through University programs.

University Faculty

Faculty Research & Creative Work Awards are funded by the USI Foundation and selected by the Faculty and Academic Affairs Committee.

Byoun, Soku, Finance, **\$7,125** for *Why Do Firms Issue Units?*

Fulton, Clifford, Biology, **\$6,372** for *Increased Nitric Oxide Bioavailability and Dilation of Male and Female Blood Vessels by Selective Estrogen Receptor Modulators*.

Harison, Casey, History, **\$1,817** for *The Early History of Marchandage: Request for Funding Support Travel for Research*.

Jermakowicz, Eva & McGuire, Brian, Accounting, **\$1,488** for *International CMA and CFM Certifications*.

Larson, Karl, Physical Education, **\$2,210** for *The Continuation of Spiritual Development in the University Setting*.

Shaw, Marlene, Biology, **\$5,894** for *Chick Cardiovascular Development: Assembling and Verifying the Endoglin Full-Length cDNA Sequence for Protein Expression*.

Valadares, Kevin, Health Services, **\$2,469** for *Guiding Principles for Professionals involved in Community-Based Institutional Review Boards*.

Teacher Enhancement Awards, through the Center for Teaching and Learning Excellence, are funded by the Lilly Retention Grant and

EXCELLENCE IN RESEARCH & SCHOLARSHIP

recommended by the Teaching Enhancement Awards Committee.

Mohr, Doris, Teacher Education, **\$3985** for *Development of Resource Materials for Mathematics Education Courses.*

Valadares, Kevin, Health Professions & Human Services, **\$1,976** for *Problem Based Learning in an Introductory Healthcare Delivery Systems Course.*

Wilding, William, Mathematics, **\$4,000** for *Enhancing the Calculus Curriculum Using Technology.*

Summer Institute for Online Teaching and Learning Grants are funded by *Instructional Technology Services and the Center for Teaching and Learning Excellence. For 2002, the program was funded by a grant from the SBC Foundation.*

Butterfield, Rohn, Health Services, **\$800** for *Financial Management in Health Care.*

Fairchild, Claudine, Radiologic Technology, **\$2,400** for *Sonographic Procedures I.*

Felton, Margaret, Psychology, **\$2,400** for *Psychology of Women.*

Kocakulah, Mehmet, Accounting, **\$2,400** for *Survey of Accounting.*

Larson, Karl, Physical Education, **\$2,400** for *Emotional Health of Children in Sport.*

Rivers, Thomas, English, **\$2,400** for *Introduction to Literature.*

Schultz, David, Engineering Technology, **\$2,400** for *Economic Evaluation of Industrial Projects.*

Valadares, Kevin, Health Services, **\$2,400** for *Introduction to Health Care Delivery Systems.*

Whisnant, Rebecca, Philosophy, **\$2,400** for *Introduction to Ethics.*

Williams, Jennifer, Computer Information Systems, **\$2,400** for *Management Information Systems.*

Wolfe, Susan, German, **\$2,400** for *Beginning German II.*

EHS School Faculty

Faculty Enhancement Fund Awards, Education and Human Services, are made by the *School's Faculty Enhancement Fund Award Committee.*

Keith, NiCole & Larson, Karl, **\$3,120** for *SOUL Empowerment Student Assistant Program.*

Pilleo, Tom & Thomas, Jeff, **\$ 2,066** for *Enhancing the Science Curriculum with Handheld Computer Devices.*

Slavkin, Michael; Mohr, Doris; & Wells, Judy, **\$2,500** for *Development of Resource Materials for M104/204 that Support and Integrate the NCTM Principles and Standards 2000.*

Stiler, Gary, **\$300** for *Exploring Diversity: Expeditionary Learning in Search of Local Funds of Knowledge in the Tri-State.*

EXCELLENCE IN RESEARCH & SCHOLARSHIP

STUDENT GRANT AWARDS

Includes grants awarded through a University program to students.

RISC (Research, Innovation, Scholarship, Creativity) Grant Program, funded by the Center for Teaching and Learning Excellence, supports undergraduate students in independent faculty guided projects. The faculty sponsor is listed in parentheses.

Business

Daub, Andrea & Green, Anna (Jermakowicz), Business, \$500 for *Practitioners Views on the Internationalization of the Accounting Industry*.

Kulenkamp, Tracy (Harrington & Khayum), Business, \$250 for *The Vertical Integration of Statistics in the Undergraduate Business Curriculum*.

Education & Human Services

Anderson, Carrie (Stiler), Education, \$100 for *Research Assistantship for FRCWA Grant – Secondary Teacher Preparation at USI: Multiple Stakeholders*.

Anderson, Jennifer (Keith), Education, \$500 for *The effect of nutrition education and physical activity on body composition in African American Women*.

Miller, Leah (Keith), Education, \$500 for *Coronary Artery Disease Risk Factors in African American Women*.

Liberal Arts

Brendel, Mark (Aahkus), Liberal Arts, \$500 for *Bound Photo Documentary of the Monte Aban, Mitla, and Yagul Archaeological Sites and local Artisans Working in Traditional Mesoamerican Crafts*.

Burns, Maggie (Aahkus), Liberal Arts, \$500 for *Mixtec and Zapotec Wood Cut*.

Carrico, Andrew (Evey), Liberal Arts, \$500 for *Relationships Between Behavioral Integrity and the Five-Factor Model of Personality*.

Clark, Nicholas; Hessel, Patricia; & Winiger, Beau (Raymond), Liberal Arts, \$410 for *Editorial Positions and United States Military Interventions*.

Dixon, Shelley; Embry, Trina; Hanes, Brandee; Harpeneau, Taryn; Jordan, Maggie; Puetzer, Beth; Rodgers, Kara; Sentz, Casey; & Winders, Gretchen (Felton), Liberal Arts, \$300 for *A Social Intervention Project for Children Residing in a Battered Women's Shelter*.

Dodd, Heather (Braysmith), Liberal Arts, \$105 for *A Critical Analysis and Comparison Between the Styles of Turner and the French Impressionists*.

Finkelstein, Michael & Phillabaum, Jason (Armstrong), Liberal Arts, \$472 for *USI Student Art Show.com*.

Hill, Elizabeth & Jain, Aarti (Raymond), Liberal Arts, \$370 for *Editorial Positions and Military Intervention in Afghanistan*.

Hoehn, Shannon (McClellan), Liberal Arts, \$127 for *Implications of Attachment Behavior in Young Adult Romantic Interactions*.

Shelton, Erich (Kempf & Skoglund), Liberal Arts, \$325 for *Utilizing Islamic Patterns in a Contemporary Vector Illustration*.

Walker, Jacob Elijah (Aahkus), Liberal Arts, \$500 for *Mesoamerican Informative Print*.

Science & Engineering

Bollenbeck, Emily (McCloud), Science & Engineering, \$399 for *End-to-End PCR Cloning of a cDNA for HMG CoA Reductase in *Plantago Lanceolata**.

Brewster, Brad; Burger, Jaleigh; Gries, Sally; Hill, Justin; Long, Adam; Reynolds, Stacy; Ripple, Katie; Schmitt, Jonelle; Schmitz, Tanya; Underhill, Margo

EXCELLENCE IN RESEARCH & SCHOLARSHIP

(Howard), Science & Engineering, \$500 for *Service Learning: Giving Back and Growing*.
Burton, Zachary (Collins), Science & Engineering, \$340 for *Analysis of Cytoskeletal Proteins in Stemonitis Flavogenita*.

Clark, Seth (Doss), Science & Engineering, \$60 for *Physical hydrogeology of deep and shallow groundwater beneath the University of Southern Indiana*.

Claybrooks, Chris & Zint, Derek (West), Science & Engineering, \$287 for *Refrigerator Control System Design Project*.

Cregger, Melissa (McCloud), Science & Engineering, \$500 for *Chromatographic Methods for Studying Variation in Chemical Defense of Wild Plantago Lanceolata*.

Cure, Mary (Doss), Science & Engineering, \$402 for *Ground Water Chemistry and Water Quality of a Sandstone Aquifer beneath the University of Southern Indiana*.

Davis, Lisa (Seyler), Science & Engineering, \$224 for *Synthesis of a Siloxane*.

Erny, Travis (Doss), Science & Engineering, \$55 for *Stratigraphy, Depositional History, and Physical Properties of Bedrock Cores Extracted from the Groundwater Monitoring Site at the University of Southern Indiana Campus*.

Graves, Dustin (Durbin), Science & Engineering, \$405 for *The Effects of Urbanization on Small-Scale Watersheds and their Sediment Transport*.

Graybill, Eric (Seyler), Science & Engineering, \$256 for *Synthesis of a Perfluorosilane*.

Hasenour, Derrick (Collins), Science & Engineering, \$335 for *Membrane Protein Isolation from Soybean Cells*.

Jermakowicz, Walter (Metscher), Science & Engineering, \$325 for *The evolution of olfactory and vomeronasal organ developmental mechanisms in amphibians*.

Jones, Ryan (Durbin), Science & Engineering, \$434 for *Rates of Channel Migration and Bank Erosion Along the Wabash River Before and After Permeable Jetty Construction Near New Harmony, Indiana*.

Kuntz, John (Maurice), Science & Engineering, \$350 for *Delaying the Senescence of Cut Floral Arrangements*.

Lord, Richard (Seyler), Science & Engineering, \$276 for *Synthesis and Study of Nickel Schiff Base Complexes*.

Orr, Gregory & Jones, Ryan (Durbin), Science & Engineering, \$500 for *An Investigation of Patoka River Alluvium Near Jasper, Indiana*.

Powell, Linda (McCloud), Science & Engineering, \$500 for *Lincoln Boyhood National Monument Insect Inventory*.

Trawick, Eric (Fulton), Science & Engineering, \$496 for *Modulation of Vascular Function by Reactive Oxygen Species: The Roles of Estrogen and Androgens*.

Waddell, Nicholas (Fulton), Science & Engineering, \$496 for *Vascular Function and the Antioxidant Properties of Dietary Phytoestrogens*.

Joint Projects

Bator, Alicia; Bowmn, Caitlin; Cantrell, Tina; Dunkel, Melissa; Hill, Elizabeth; Metcalf, Emily; & Royer, Carla (Boostrum, Galbus, & Thomas), Education & LA, \$405 for *Mesker Park Zoo Curriculum Project*.

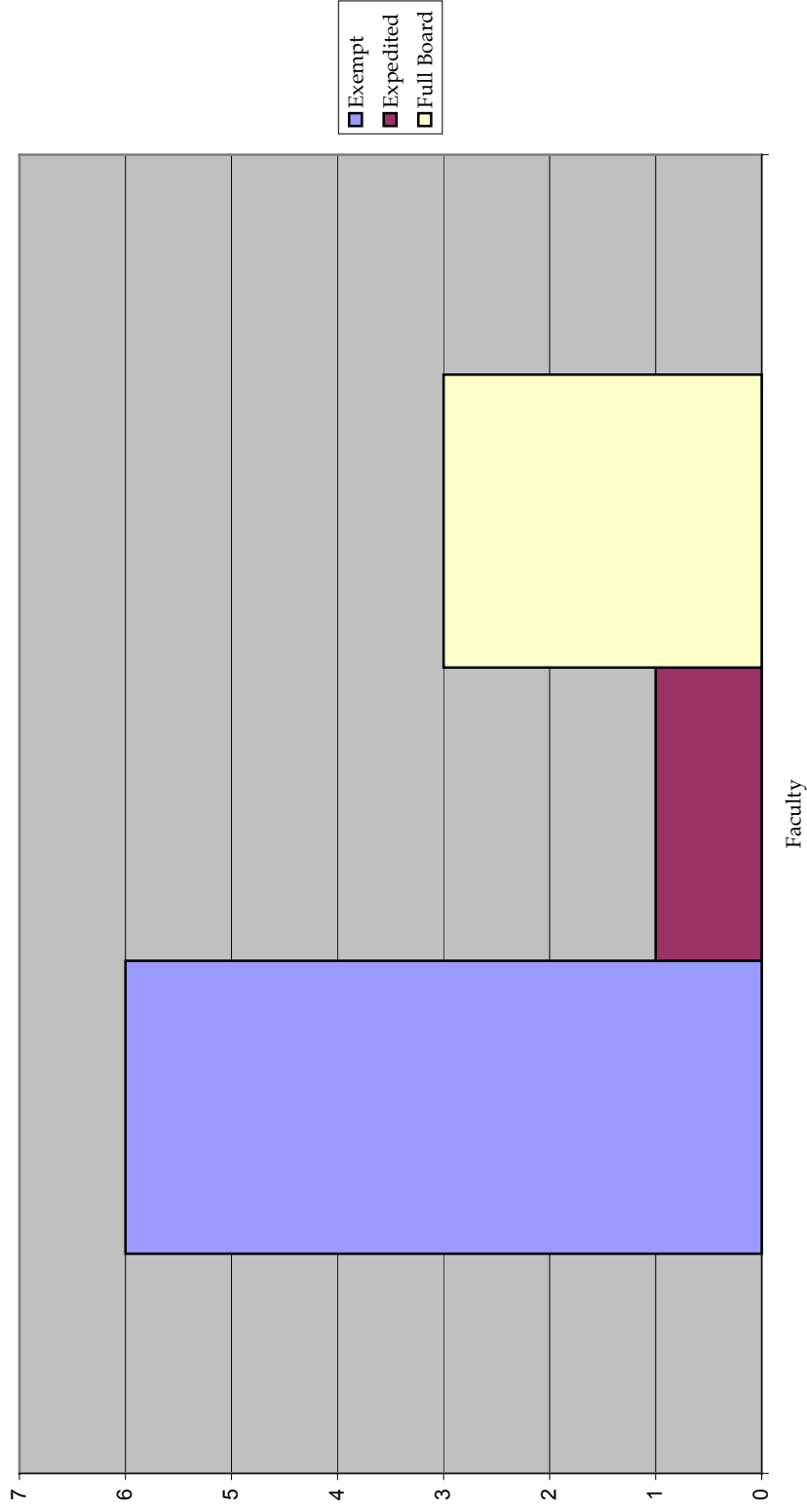
EXCELLENCE IN RESEARCH & SCHOLARSHIP

HUMAN SUBJECT RESEARCH PROJECTS FOR 2001-2002

In academic year 2001-2002, the Sponsored Research Office received 151 applications for review of human subject research. Of these, 14 protocols were reviewed by the full Institutional Review Board (IRB) and 32 were eligible for expedited review, the process whereby only two members of the IRB review the protocol. All 151 were reviewed by the Sponsored Research Office staff. At scheduled meetings of the full board, 6 applications were reviewed in the fall semester and 14 in the spring. The committee met six times in the fall and five times in the spring semester. The majority of the researchers were students, both undergraduate and graduate, submitting 138 of the applications. Faculty submitted 10 applications. The discrepancy in the total number of protocols was caused by a series of revisions and duplications. The following two charts depict the number of IRB proposals submitted by faculty and students for each review category.

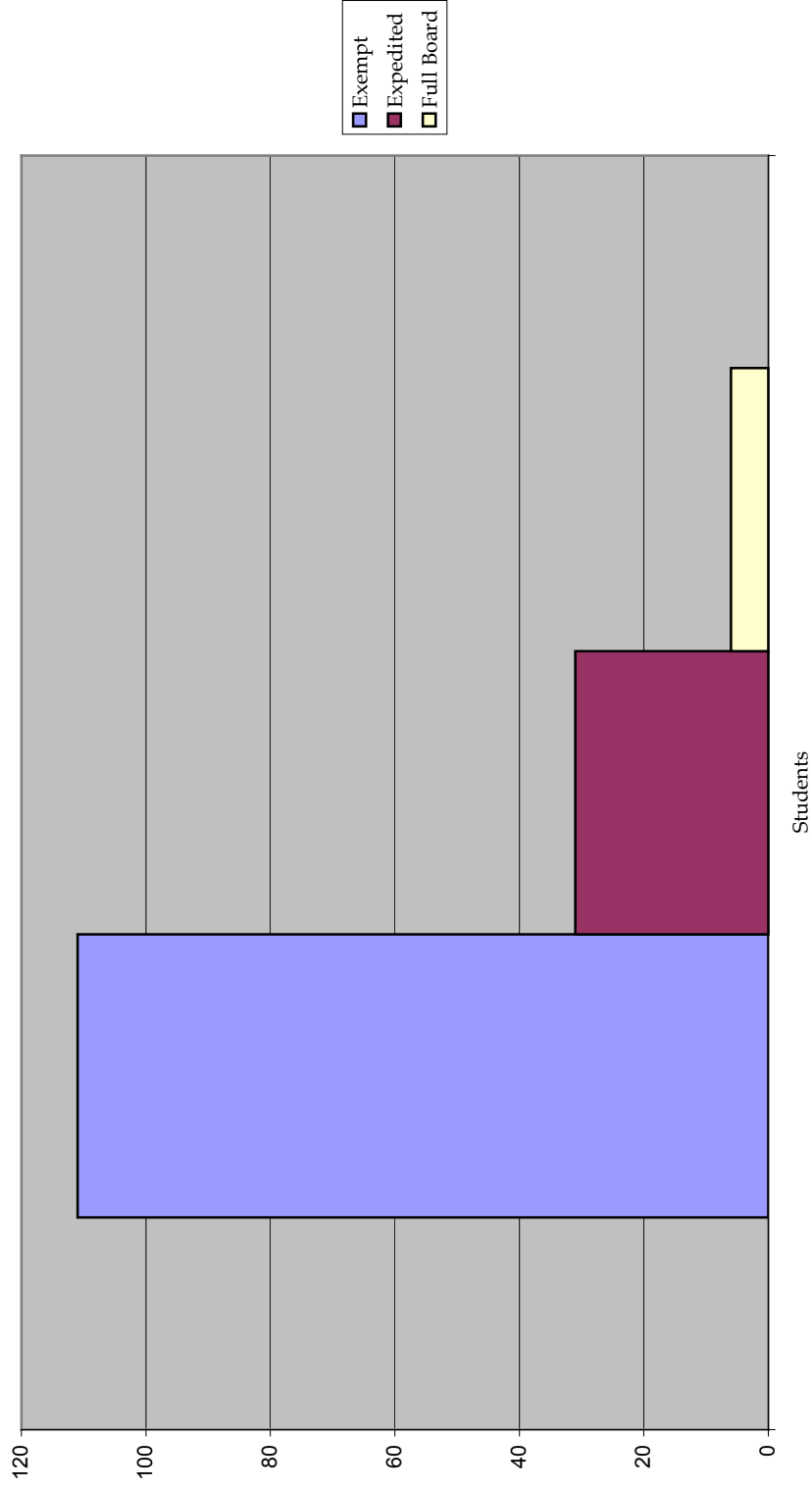
EXCELLENCE IN SCHOLARSHIP & RESEARCH

FACULTY IRB SUBMISSIONS 2001-2002



EXCELLENCE IN SCHOLARSHIP & RESEARCH

STUDENT IRB SUBMISSIONS 2001-2002



EXCELLENCE IN SCHOLARSHIP & RESEARCH

2001-2002 USI HUMAN RESEARCH PROJECTS

FACULTY & STUDENT RESEARCH

Includes proposals submitted to the Institutional Review Board.

Institutional Review Board (IRB) Proposals

are review by the Institutional Review Board and approval permits faculty members and students to conduct research involving human subjects. If applicable, the faculty sponsor is listed in parentheses.

FALL 2001

Nursing

Exempt

Arnold, Linda; Elick, Karen; Holtschaw, Diana; & Melton, Nona (Sparks), Nursing, *Comparison of Nutritional Risk Among the Young-Old, Middle-Old, and the Old-Old Person.*

Bush, Vickie; Cox, Sandra; Horn, Vicky; & Lauderbough, Linda (Halstead), Nursing, *Identifying Causes for Lack of Screening and Early Detection of Breast and Cervical Cancer Among African American Women.*

Diehl, Daniel; Spangler, Donna; & Winters, Dee (Cousert), Nursing, *Factors Influencing the Effectiveness of a Full Service School: A Qualitative Study.*

Garrett, Emily & Schreiber, Diane (Davis), Nursing, *The relationship of spirituality and quality of life in the chronic renal patient.*

Hamilton, Sara (Davis), Nursing, *A Study of Patient Satisfaction and Length of Stay in Emergency Departments.*

Lafferty, Chris; Kreicker, Cindi; Perry, Denah, Purcell, Tammie; & Trethewey, Pat (Sparks), Nursing, *A Correlation of Basic Needs Satisfaction and health promotion Behavior in the Elderly.*

Mitchell, Heather & Monroe, Christie (Davis), Nursing, *The Effects of smoking on the re-occlusion of coronary artery stents following Percutaneous Transluminal Coronary Angioplasty (PTCA).*

Patternson, Ryan; Ashburn, Kirk; Carrico, Judy; English, Rita; & Phelps, Leslie (Davis), Nursing, *Relationship Between Social Support and patient Satisfaction with Nursing Care Among Oncology Inpatients.*

Spurlock, Darrell (Davis), Nursing, *What is the relationship between level of spirituality and anxiety in patients with cardiovascular disease.*

St. Laurent, Paul (Davis), Nursing, *Is there a difference in the postoperative hemodynamic support required between on-pump (ONCAB) and off-pump (OPCAB) coronary artery bypass (CABG) surgery patients.*

Zabirka, Bonnie & Beck, Lisa (Sparks), Nursing, *Does a Structured Trauma Program Improve Trauma Patient's Satisfaction Outcomes.*

Expedited

Baugh, Janet; Cole, Lorena; & Jackson, Edna (Sparks), Nursing, *Martin Company Smoking Cessation/Health Promotion Project.*

Cunningham, Kelly & Miller, Andrea (Davis), Nursing, *The effect of a single home based educational intervention for congestive heart failure patients in reducing ER readmissions.*

Langston, Cheryl & Burkhart, Candyce (Davis), Nursing, *The Effectiveness of a Structured Education Program on Decreasing Hospital Readmission Days in Patients with Congestive Heart Failure.*

EXCELLENCE IN SCHOLARSHIP & RESEARCH

Full Board

Dennis, Christopher (Sparks), Nursing, *Decreasing false-positive results in newborn hearing screens.*

Hodges, Sara; McCoy, Alicia; & Schmidt, Lynne (Davis), Nursing, *Identification of Hepatitis B virus and Hepatitis C virus risk factors in the Vanderburgh County Jail population compared to the general population.*

McCullough, Julie & Bawel, Karen, Nursing, *Women's Perception of the significance of dental care during pregnancy.*

Occupational Therapy

Exempt

Cummings, Jessica (Luebben), Occupational Therapy, *Sensory Correlations in People with Physical Disabilities.*

Ferguson, Scott (Luebben), Occupational Therapy, *The Effects of Sensory Integration on Drug Exposed Children.*

Hamilton, Emily (Luebben), Occupational Therapy, *Open Classroom Settings: Teacher Perspectives.*

Hartman, Mary (Luebben), Occupational Therapy, *A Closer Look: Is adaptive equipment being used after discharge.*

Kernodle, Erin (Luebben), Occupational Therapy, *The Next Generation of Therapists: Where are they heading?.*

Mann, Christopher (Luebben), Occupational Therapy, *Work to Live or Live to Work: The value of leisure time on a changing work force.*

Salmon, Kristy (Luebben), Occupational Therapy, *What is this Sound of Music.*

Tinsley, Whitney (Luebben), Occupational Therapy, *Stress and Personalities Across College Majors.*

Expedited

Bickwermert, Erin (Luebben), Occupational Therapy, *Breathing Relaxation: The Effects of Aromatherapy Has On Stress Levels.*

Johnston, Jennifer (Luebben), Occupational Therapy, *GETTING PHYSICAL! How exercised can influence energy and stress.*

King, Sarah (Luebben), Occupational Therapy, *Weight Watchers: Does it Really Have Any Effect on Weight Loss.*

Mushrush, Kari (Luebben), Occupational Therapy, *Get Your Mood Moving! The Effect of Exercise on Mood.*

Oxendine, Erin (Luebben), Occupational Therapy, *Running for a Collegiate Team: A higher level.*

Scates, Meghan (Luebben), Occupational Therapy, *It's all in the Timing: Is mental alertness affected by the time of day you exercise.*

Physical Education

Exempt

Larson, Karl, Physical Education, *Physical Educators Preparedness to Teach School Health Education.*

Political Science

Full Board

Raymond, Paul, Political Science, *Day Reporting Drug Program Assessment Project.*

Psychology

Exempt

Alford, Samatha (Evey), Psychology, *The Effect of using Pictorial Stimuli as Aides in Learning.*

EXCELLENCE IN SCHOLARSHIP & RESEARCH

Atchison, Sara (Evey), Psychology, *Stress and its Relation to Mental and Physical Well-being and the Coping Mechanisms used to combat stress.*

Baker, Allen (Evey), Psychology, *The Effects of Music on Test Performance of College Students.*

Carlile, Lisa (Evey), Psychology, *Mozart Effect.*

Carmichael, Jennifer (Hall), Psychology, *Jury Sentencing and Award Procedures.*

Cleveland, Mandy (Hall), Psychology, *Evaluating Professional Scenarios.*

Dempsy, Amy Jo (Hall), Psychology, *Changing Moods.*

Dick, Andrew (Evey), Psychology, *Frequency of relationship betrayal among college students.*

Gallman, Jill (Evey), Psychology, *The Effects of Aromatherapy on Mood.*

Gentle, Rebecca (Evey), Psychology, *Academic Achievement of College Students.*

Higgins, Sheila (Evey), Psychology, *Does Advertising and Media Affect the Self-Image of College Women.*

Hughes, Amber (Evey), Psychology, *Television Viewing.*

Jacobsen, Jennifer (Hall), Psychology, *Attention to Gender Differences.*

Jeffries, Megan (Evey), Psychology, *College Students' Eating Habits.*

Kennedy, LaShonda (Evey), Psychology, *Does body image & self-esteem differ in female athletes and non-athletes.*

Matthews, Kashana (Hall), Psychology, *Does Hair Color have an Effect on a Criminal's Sentence.*

McCandless, Cassandra (Evey), Psychology, *The Effects of Teacher Appearance on Student Attitudes.*

McElravy, Elizabeth (Evey), Psychology, *Teacher-Student Relationship and benefits in regular class with a teacher's aide and in a small class.*

Mofield, Tanya (Evey), Psychology, *Color and Emotion.*

Nelson, Patricia (Hall), Psychology, *The Effect of Humor on the Hiring Process.*

Pender, Michelle (Evey), Psychology, *Smoking and its Social Influence.*

Redman, Nathan (Hall), Psychology, *Clothing effects on monetary donations to charity.*

Rivers, Nathaniel (Hall), Psychology, *Monkey Trap: Comprehension of Poetry.*

Sabel, Philip (Hall), Psychology, *Evaluating of Writing Competency, Assessing more than Ability.*

Surles, Dirkk (Hall), Psychology, *Ability Grouping or Tracking: What works for you.*

Terry, Erin (Evey), Psychology, *The relationship between dating in college and future career goals.*

Tomes, Laura (Hall), Psychology, *The Effect of Temperature on Memory and Concentration.*

Williams, Katie (Evey), Psychology, *Color and Taste.*

Williams, Khara (Hall), Psychology, *The Effects of Music on Physical Attractiveness.*

Expedited

McCombs, Timothy (Hall), Psychology, *The Effect of Aerobic Exercise on Mood.*

EXCELLENCE IN SCHOLARSHIP & RESEARCH

Social Work

Exempt

Day, Smitha (Cousert), Social Work, *Addressing Mental Health Concerns of International Students on USI Campus.*

Turner, Gena (Cousert), Social Work, *Use of Communication and Pre & Post Placement Services by Birth Moms during Open Adoption: Is it alleviating the Grieving Process.*

Expedited

Penick, Mary (Cousert), Social Work, *Children Whose Parents have Experienced Divorce: An Examination of the Impact of Intervention Programs on Self-Esteem in Relation to Selected Variables.*

Susnjara, April & Grundhoefer, Amber (Westhuis), Social Work, *An Evaluation Study of the Effectiveness of Assertiveness Training with School-Aged Males, Grades 3-6.*

Sociology

Exempt

Schroer, Todd, Sociology, *The Use of Music and the Internet by Social Movements.*

SPRING 2002

Mathematics

Exempt

Mohr, Doris; Slavkin, Michael; & Wells, Judy, Mathematics, *Development of Resource Materials for Mathematics Education Courses.*

Nursing

Exempt

Ceniza, Doris (Davis), Nursing, *Relationship between Perceived Level of Stress Among Critical Care Nurses and Patient Satisfaction.*

Coudret, Nadine & White, Ann, Nursing, *Clinical Decision Making Research with 3rd year nursing students.*

Sparks, Martha, Nursing, *Caregiver's Perception of Retrogenesis during Alzheimer's Progression.*

Physical Education

Expedited

***Anderson, Jennifer & Miller, Leah (Keith & Larson)**, Physical Education, *Coronary Artery Disease Risk Factors in African American Women.*

Political Science

Full Board

Raymond, Paul, Political Science, *AMENDMENT: Philosophy & Political Science.*

Psychology

Exempt

Andreou, Maria (Hall), Psychology, *The effect of study environment on short memory.*

Bridgewater, Lisa (Evey), Psychology, *The Color of After Images.*

Coats, Keisha (Evey), Psychology, *The Effects of Text Format and Use of Color on Text Recall.*

Crawford, Angelica (Evey), Psychology, *Prominence of Emotion in Posed versus Genuine Facial Expressions.*

Edwards, Laura (Evey), Psychology, *The Mother-Daughter Relationship and its Effects on Adolescent Self-Esteem.*

Egen, Amanda (Hall), Psychology, *The Effects of Pictorial Stimuli on Recall.*

EXCELLENCE IN SCHOLARSHIP & RESEARCH

Fischer, Monica (Hall), Psychology, *The effect of background music on reading rate.*

Foley, Kristy (Evey), Psychology, *The Effects of Positive and Negative Response Toward Acts of Aggression in a Day Care Setting.*

Fortwendel, Ryan (Hall), Psychology, *Body Type Preference of Males, and What Males Think Females will Prefer.*

Hancock, Keri (Hall), Psychology, *Car Salesman and Sexism.*

Horton, Melissa (Hall), Psychology, *The Effect of Speaker Panels on Attitudes towards homosexuality.*

Hutchinson, Becky (Evey), Psychology, *Judgment made about Single Mothers Based on Minimal Knowledge.*

Jarrell, Corinne (Hall), Psychology, *The effect of Lavender Aromatherapy on Mood.*

Kramer, Emily (Evey), Psychology, *A Study of the Relationship Between Personality and Spirituality.*

Krietemeyer, Jennifer (Jaquess), Psychology, *To Motivate or Not Motivate: How Professors affect School Performance.*

Krizmanich, Cathryn (Hall), Psychology, *The Effect of Group Pressure on an Individual.*

Lannert, Leigh Ann (Evey), Psychology, *The Effect of Public Education Versus Private Education.*

Mattingly, Lori (Hall), Psychology, *The effect of poetry on emotions.*

McCarty, Kari (Evey), Psychology, *The Effect of Exercise on Body Image and Self-Esteem.*

McClellan, Edie, Psychology, *Adult Attachment Styles & Reactions to Emotional Situations in Dating Couples.*

McLemore, Ashlee (Evey), Psychology, *Initiative taking as a determinant of gender.*

Meghan (Evey), Psychology, *Artificial Food Coloring & Food Preferences Between Age Groups.*

Patel, Rita (Evey), Psychology, *Life without Television.*

Sterckler, Shelly (Evey), Psychology, *Game-Playing as a Part of Social Dynamics .*

Stevens, Linda (Evey), Psychology, *Movie Preference and Personality.*

Stone, April (Evey), Psychology, *Gender's Effect on Message Interpretation.*

Swaney, John (Hall), Psychology, *The Effect of Note Taking on Memory.*

Thomas, Angela (Evey), Psychology, *The Influences of Color on Emotions of People with Different Age and Gender.*

Volk, Meghan (Evey), Psychology, *Artificial Food Coloring & Food Preferences Between Age Groups.*

Expedited

Cleghorn, Tosha (Evey), Psychology, *The Relationship Between Time Spent in Day Care and Children's Vocabulary.*

Day, Heather (Evey), Psychology, *How do Gender Stereotypes Relate to Toy Preference.*

Flannery, Shirely (Hall), Psychology, *A Scent of Orange.*

Goodpaster, Sarah (Hall), Psychology, *Humor and Mood.*

Jaquess, David, Psychology, *Workplace Stress Management Using a Brief Relaxation Technique.*

EXCELLENCE IN SCHOLARSHIP & RESEARCH

Mathis, Misty (Hall), Psychology, *The Effect of Music and Television on Reading Comprehension.*

Occupational Therapy

Exempt

Belt, Regina (Luebben), Occupational Therapy, *Five Fast or Slow.*

Bennett, Heather (Luebben), Occupational Therapy, *How Many Patients are there Requiring Occupational Therapy Services.*

Clayomb, Jessica (Luebben), Occupational Therapy, Occupational Therapy: *Do They Like , Find People Jobs.*

Cummings, Jessica (Luebben), Occupational Therapy, *Rewards vs. Consequences: The Discipline Dilemma.*

Holland, Jenny (Luebben), Occupational Therapy, *Do They Really Know.*

Kennedy, Kimberly (Luebben), Occupational Therapy, *Children are from Heaven.*

Mushrush, Kari (Luebben), Occupational Therapy, *Time Out for Time Management.*

Persons, Kimberley (Luebben), Occupational Therapy, *Spirituality in Occupational Therapy Part III.*

Oxendine, Erin (Luebben), Occupational Therapy, *Getting in The Zone: Does Runner's High Exist.*

Salmon, Kristy (Luebben), Occupational Therapy, *The Need to Support your Professional Association.*

Shake, Jennifer (Luebben), Occupational Therapy, *Parent's Perception of Hippotherapy.*

Vine, Nicole (Luebben), Occupational Therapy, *How to Tell a Child.*

Expedited

Evans, Jamie (Luebben), Occupational Therapy, *Reaction Time: Fast or Slow.*

Hartman, Mary (Luebben), Occupational Therapy, *All Fun and Games! The Effect of Games on Processing Speed.*

Knox, Erika Mowrer (Luebben), Occupational Therapy, *Help Me Catch Some Zzzzz's.*

Martin, David (Luebben), Occupational Therapy, *Improving Grip Strength with Thera-Putty.*

Mattern, Elizabeth (Luebben), Occupational Therapy, *Energy and Health Maintenance: Can Multi-Vitamins Play a Role.*

Welch, Lisa (Luebben), Occupational Therapy, *The Child with Visual Perceptual Difficulties: Can Occupational Therapy Help.*

Martin, David (Luebben), Occupational Therapy, *Improving Grip Strength with Thera-Putty.*

Roy, Rachel Brooks (Luebben), Occupational Therapy, *Grip Strength Versus the Household Childproof Container.*

Social Work

Exempt

Alvarez, Michelle, Social Work, *Development and Validation of and off-campus MSW program.*

Alvey, Christie (Cousert), Social Work, *Foster Care Histories Among People who are Homeless.*

Barchet, Beht & Wiseman, Nori (Cousert), Social Work, *Does Cognitive-Behavioral Group Therapy for Depression Reduce Depressive Symptoms, Increase Participant Goal Attainment, and Meet Participant Satisfaction.*

Conner, Barbara (Cousert), Social Work, *Is Mental Illness Complicating Legal Issues Among Juveniles.*

EXCELLENCE IN SCHOLARSHIP & RESEARCH

Davis, Kimberly & Whilter, Karen (Cousert), Social Work, *Use of Humor in Social Work.*

Delph, Emily & Fisher, Sherry (Westhuis), Social Work, *Suspension School Program Evaluation.*

Harper, Angela (Cousert), Social Work, *Supportive Services for Homeless Women with Mild Depression.*

Harper, Howard (Cousert), Social Work, *Alcohol Abuse in Elderly.*

Kluemper, Lindsay (Westhuis), Social Work, *Examination of the Length of Group and Individual Therapy in Clients with Personality Disorders.*

Kreilein, Elaine (Cousert), Social Work, *The Effects of Anti-bullying Curricula on Children's Attitudes Concerning Bullying.*

Moll, Laura (Westhuis), Social Work, *Do the caregivers of Alzheimer's Disease patients have enough resources available to them to help them cope with daily stresses.*

***Penick, Mary (Cousert)**, Social Work, *Family Functioning: Assessment of Impact of Parent Training Program in Relation to Selected Variables.*

Roeder, Michelle & Taylor, Camille (Cousert), Social Work, *Bullying in Schools: Evaluation of an education program designed to assist students in identifying and acquiring skills necessary to reduce the incidence of bullying in a private school setting.*

Werremeyer, Cristina & Yonaka, Suzanna (Westhuis), Social Work, *The differences in the stress levels of full-time advanced standing, part-time advanced standing, regular full-time, and four-year part-time students at the University of Southern Indiana.*

Expedited

***Baker, Katherine (Cousert)**, Social Work, *Play Therapy: A Method of Helping Problem Children Help Themselves.*

Flamion, Lisa (Cousert), Social Work, *An Evaluation of the Effects a suicide Prevention Program has on Teacher's Awareness & Comfort Level in Dealing with Students Who May be Suicidal.*

Goebel, Cecelia (Cousert), Social Work, *An Examination of Depression among Caregivers of Persons with Early Onset Alzheimer's Disease and Persons with Late Onset Alzheimer's Disease.*

Porter, Henri (Cousert), Social Work, *Exploring the influence of life skills training/intervention in helping individuals to become self-sufficient.*

***Richardson, Jodi (Cousert)**, Social Work, *A Single Subject Study on the Effects of Individual Cognitive Behavioral Therapy and Multiple Sclerosis on Three Selected Outcomes.*

***Walker, Dianna (Westhuis)**, Social Work, *Is the GROW Program an effective intervention to increase knowledge of conflict resolution skills with 4th grade students at Cedar Elementary School.*

Full Board

Smith, Lynne & Sterchi, Jamie (Westhuis), Social Work, *How do peer relationships impact adolescent illicit substance use.*

***IRB Proposals that were originally reviewed by the full board.**

GRADUATE STUDIES & SPONSORED RESEARCH

GRADUATE STUDIES SERVICES

The Office of Graduate Studies serves graduate students and a graduate faculty whose primary goals are the advancement of scholarship, research, and creative activity. It is through the encouragement and support of these goals that the institution contributes to the development of knowledge and the professional preparation of its graduate students.

The primary responsibilities of the Office of Graduate Studies and Sponsored Research are to maintain and enhance the quality of graduate programs and to facilitate research and creative activity. The Graduate Council, the legislative and administrative body for graduate programs of the University, sets policies and regulations governing graduate work. The Graduate Council conducts the business of the faculty having to do specifically with graduate education, including development, direction, and implementation of graduate programs. The Office of Graduate Studies serves as the admissions office for graduate students and provides administrative support to the Graduate Council and the graduate programs.

The University is a member of the Council of Graduate Schools and the Midwestern Association of Graduate Schools (MAGS). The director and the administrative assistant for Graduate Studies both maintain membership in the National Association of Graduate Admission Professionals.

USI is authorized to confer the following graduate degrees: Master of Arts in Liberal Studies, Master of Business Administration, Master of Health Administration, Master of Science in Accountancy, Master of Science in Education, Master of Science in Industrial Management, Master of Science in Nursing, Master of Science in Occupational Therapy, and Master of Social Work.

GRADUATE STUDIES ACTIVITIES

The Graduate Studies Office works with a number of other offices: Registrar's Office, International Student Office, Student Financial Aids, and especially with the graduate program offices, the directors and their administrative assistants. The Graduate Studies Office maintains a web page at <http://www.usi.edu/gradstud/gradstud.asp> describing Graduate Studies policies and programs and making information accessible.

In the past two years, the staff in GSO have instituted a number of changes to the application and admission process to improve services to graduate students and faculty. Following are a number of these accomplishments:

- Adopted electronic mail for missing materials letters and other student communications, which increased the rapidity of the process and the response of applicants.

GRADUATE STUDIES & SPONSORED RESEARCH

- Created an electronic worksheet for the evaluation of transcripts, which decreased application processing time.
- Created a new file coding system that showed status of application at a glance.
- Created a new SIS coding system for post-master's applicants accepted to a certificate program, which allows those students to enroll as continuing students instead of guest students. This allowed them to submit only one application and obviated the requirement that they submit a non-degree-seeking application every semester they enrolled.
- Created a concentration field on the graduate SIS screen that allowed students in programs such as the Teaching Licensure program and the RN-MSN program to be tracked for reports.
- Provided read-only access to graduate SIS screens to the graduate programs to aid in their ability to monitor student records and applications.
- Revised Course Petition and Graduate Faculty forms and placed them on the common users drive of the mainframe for easy access.
- Revised Graduate Studies Web Pages.
- Improved flow of information between the programs and the Graduate Studies office through meetings and increased communication.

In the past year, the Graduate Studies Office has supported the Graduate Council to admit 36 new faculty members to the graduate faculty, reviewed and approved 19 new graduate courses, reviewed 8 course modifications, and reviewed and approved one new graduate program, the Master of Public Administration, which is planned for spring implementation if it receives ICHE approval.

Annually, the director selects student representatives to the Graduate Student Advisory Group, which meets in the fall semester to discuss issues relevant to the graduate student experience of all graduate students. In 2002, the Group selected the graduate student representatives to the Student Academic Grievance Committee.

For the past three years, the director has served on MAGS' Distinguished Thesis Award Committee, which involves University faculty in reviewing and selecting the best master's thesis in the Midwest. In the three years of the director's term on this committee, approximately 45 USI faculty have reviewed approximately 60 theses in two selection rounds per year. Several faculty have reviewed three theses in one year.

GRADUATE STUDIES & SPONSORED RESEARCH

GRADUATE ENROLLMENTS

Graduate enrollments have increased substantially over the last ten years. The first semester graduate enrollment exceeded 300 was spring of 1994, first exceeded 400 in fall of 1994, first exceeded 500 in spring 1998. Graduate enrollments have remained above 400 since fall of 1995, above 500 since fall of 2001. In First Summer, 2002, graduate students totaled 19.3 percent of the total student enrollment of the University. That graduate students are an important aspect of USI has become noticeable. Charts and tables illustrating various aspects of graduate enrollments follow.

Chart 1 shows headcount enrollments for spring, summer and fall semesters from spring 1992 to summer 2002. In this chart the summer enrollment equals the sum of the three summer terms.

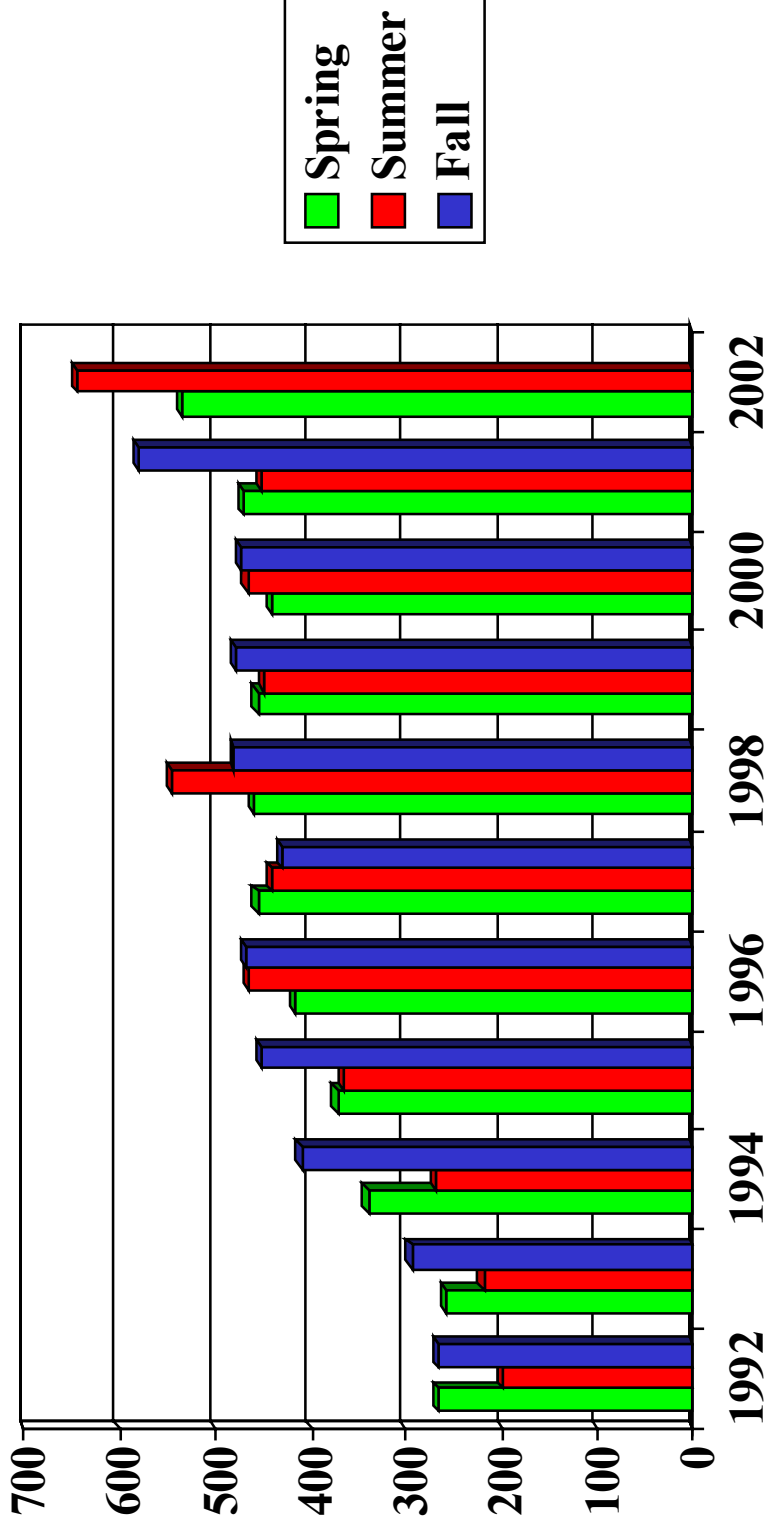
Chart 2 breaks out the total summer headcount enrollments for 1992-2002 for each summer term.

Chart 3 breaks out the fall headcount enrollments for 1992-2002 by degree. In this chart, MSE includes both Elementary and Secondary Education program enrollments, MSW includes both Advanced Standing and Two-Year Program enrollments, and MSN shows the sum of the five nursing programs: Acute Care Nurse Practitioner, Family Nurse Practitioner, Nurse Educator, Nurse Management and Leadership, and Nurse Specialist.

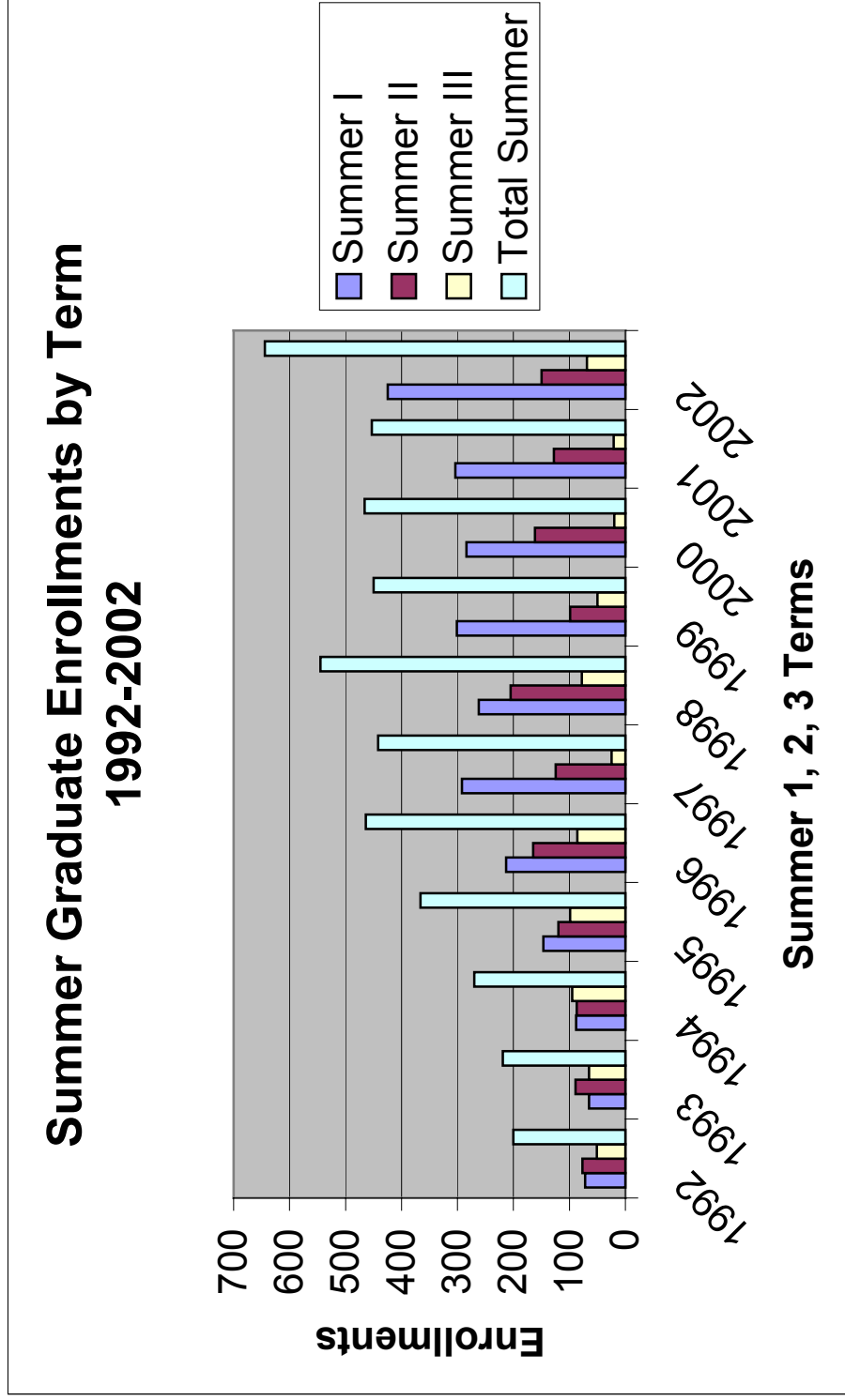
Tables 1, 2, and 3 show the fall headcount and FTE enrollments for the past five years, 1997-2001, by degree, and the spring and total summer headcount and FTE enrollments for the past five years, 1998-2002, by degree. Table 4 shows the number of graduate degrees conferred by program from 1992 through 2002* (2002 is total number thus far).

GRADUATE STUDIES & SPONSORED RESEARCH

GRADUATE ENROLLMENTS 1992-2002



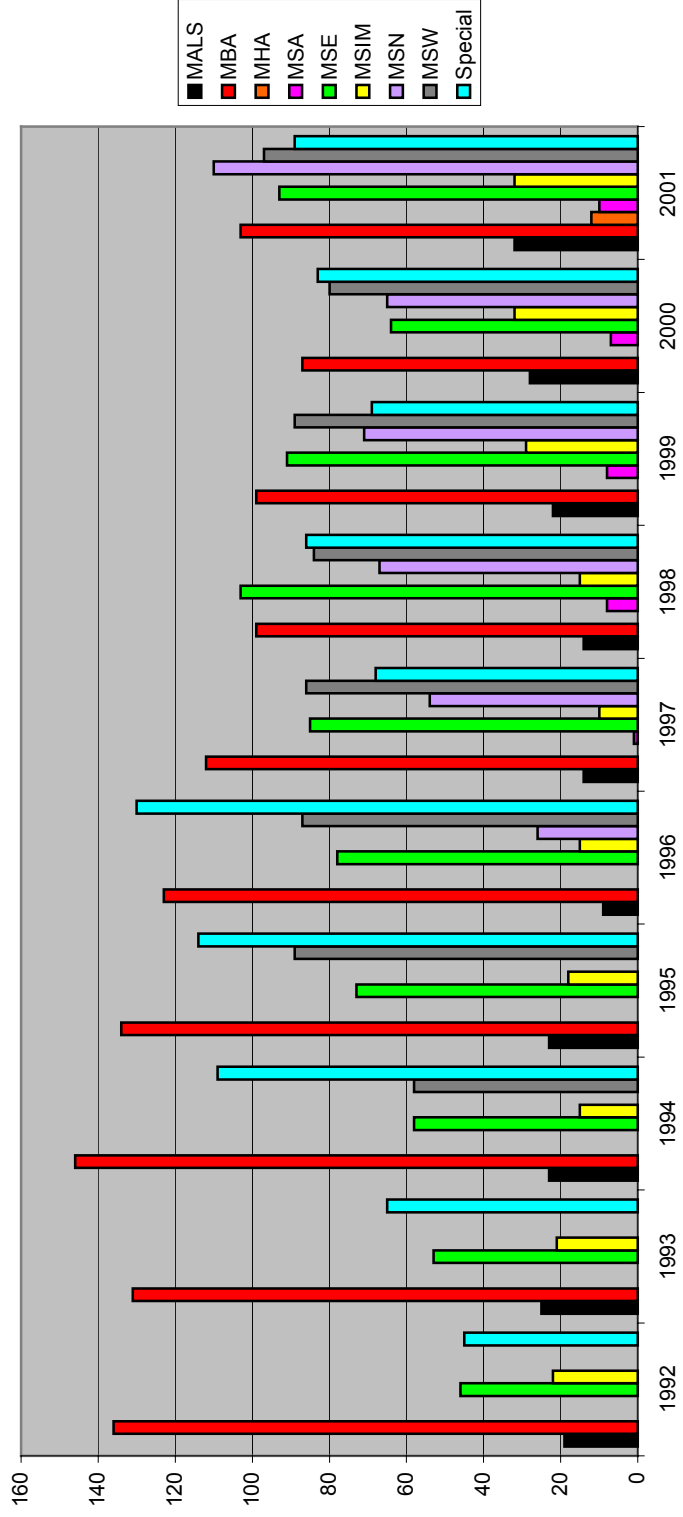
SUMMER ENROLLMENTS BY TERM 1992-2002



GRADUATE STUDIES & SPONSORED RESEARCH

FALL GRADUATE ENROLLMENTS 1992-2002 BY DEGREE

Fall Graduate Enrollments
1992-2001
By Degree



GRADUATE STUDIES & SPONSORED RESEARCH

GRADUATE & FTE ENROLLMENT BY PROGRAM – SPRING TERMS

	1998		1999		2000		2001		2002	
	Enr	FTE Enr	Enr	FTE Enr	Enr	FTE Enr	Enr	FTE Enr	Enr	FTE Enr
MALS	15	4.75	15	4.50	17	5.75	28	11.00	20	7.50
MBA	111	37.75	100	38.75	84	31.75	95	40.00	107	39.25
MHA	0	0.00	0	0.00	0	0.00	0	0.00	10	5.00
MSA	3	1.00	7	2.00	7	2.00	5	1.50	9	4.50
MSE	82	24.58	82	23.33	85	23.00	88	27.50	85	32.50
MSIM	11	2.51	12	3.68	31	8.51	30	9.00	29	7.75
MSN	61	25.23	67	26.91	69	28.32	62	26.42	102	42.90
MSW	86	64.08	82	63.25	82	63.25	81	64.75	89	70.00
SPEC	91	25.99	89	25.91	66	20.75	82	25.25	85	25.74
TOTAL	460	185.89	454	188.33	441	183.33	471	205.42	536	235.14

GRADUATE STUDIES & SPONSORED RESEARCH

GRADUATE & FTE ENROLLMENT BY PROGRAM ~ SUMMER TERMS I, II, III

	1998		1999		2000		2001		2002	
	Enr	FTE Enr	Enr	FTE Enr	Enr	FTE Enr	Enr	FTE Enr	Enr	FTE Enr
MALS	4	0.75	0	0.00	11	3.50	8	2.25	13	3.25
MBA	66	18.50	56	15.75	48	14.50	53	14.50	68	19.75
MHA	0	0.00	0	0.00	0	0.00	0	0.00	8	4.00
MSA	1	0.50	1	0.25	3	0.75	6	2.00	8	2.75
MSE	162	49.33	162	51.17	149	49.17	105	33.08	132	42.17
MSIM	3	0.51	4	0.92	2	0.50	21	5.50	14	3.50
MSN	48	17.85	61	22.17	55	20.69	52	19.84	85	28.50
MSW	94	39.33	87	40.68	123	45.03	125	47.83	145	56.12
SPEC	163	47.55	79	22.49	75	21.57	81	23.19	171	47.24
TOTAL	541	174.32	450	153.43	466	155.71	451	148.19	644	207.28

GRADUATE STUDIES & SPONSORED RESEARCH

GRADUATE & FTE ENROLLMENT BY PROGRAM ~ FALL TERMS

	1997		1998		1999		2000		2001	
	Enr	FTE Enr	Enr	FTE Enr	Enr	FTE Enr	Enr	FTE Enr	Enr	FTE Enr
MALS	14	4.00	14	5.08	22	9.00	28	11.83	32	12.00
MBA	112	40.00	99	35.00	99	36.00	87	33.33	103	40.50
MHA	0	0.00	0	0.00	0	0.00	0	0.00	12	6.00
MSA	1	0.50	8	3.00	8	2.00	7	3.00	10	5.75
MSE	85	24.00	103	29.50	91	24.75	91	26.50	93	31.75
MSIM	10	2.51	15	5.25	29	8.51	32	9.75	32	9.51
MSN	54	24.40	67	28.49	71	30.82	65	27.68	111	48.68
MSW	86	66.25	84	66.00	89	68.75	80	64.75	97	77.75
SPEC	68	18.58	86	23.25	69	20.25	83	29.33	89	31.25
TOTAL	430	180.24	476	195.57	478	200.08	473	206.17	579	263.19

GRADUATE STUDIES & SPONSORED RESEARCH

GRADUATE DEGREES CONFERRED 1992-2002*

CODE	MAJOR	91/92	92/93	93/94	94/95	95/96	96/97	97/98	98/99	99/00	00/01	01/02
ACNP	ACUTE CARE NURSE PRACTITIONER	0	0	0	0	0	0	0	0	2	2	2
FNP	FAMILY NURSE PRACTITIONER	0	0	0	0	0	6	10	14	16	12	18
IM	INDUSTRIAL MANAGEMENT	1	0	3	3	3	1	2	3	1	1	15
MALS	LIBERAL STUDIES	0	0	0	2	4	2	2	6	7	6	3
MBA	BUSINESS ADMINISTRATION	14	21	27	25	25	23	25	19	26	25	33
MEED	ELEMENTARY EDUCATION	0	0	0	1	3	17	17	29	11	27	18
MSA	ACCOUNTING	0	0	0	0	0	0	0	0	3	3	1
MSED	SECONDARY EDUCATION	11	22	26	14	21	19	21	22	32	18	9
MSWA	SOCIAL WORK	0	0	0	17	17	13	16	12	19	8	2
MSWT	SOCIAL WORK	0	0	0	0	20	21	34	26	24	26	0
NS	CLINICAL NURSE SPECIALIST	0	0	0	0	0	0	5	3	4	3	2
TOTAL		26	43	56	62	93	102	132	134	145	131	103

*To date, not all 2001-2002 degrees are conferred.

GRADUATE STUDIES & SPONSORED RESEARCH

RECOGNITION & ACKNOWLEDGMENTS

The Office of Graduate Studies & Sponsored Research wishes to acknowledge the invaluable service the following individuals and offices provide to our office. Their assistance is essential to the duties we perform and is greatly appreciated. We thank them for their dedication and support.

Business Office:

Mary Hupfer
Phil Rawley

Computer Center:

Carol Schmitt
Jayne Tang

Development:

Mary Jane Schenk

Graduate Programs:

MALS

Thomas Rivers
Kathy MacGregor

MBA

Ernest Hall
Linda Dillbeck

MHA

Carol Hermes
Julie Layer

MSA

Daniel Wade
Linda Dillbeck

MSE

Thomas Philleo
Kristy Dedmond

MSIM

David Schultz
Donna Moore

MSN

Melissa Vandever
Pam Bass
Gail Cummins

MSW

David Westhuis
Christy Baker
Jalene Weber

Human Resources:

Julia Yancey

Registrar's Office:

Sandy Farmer
April O'Grady
Karen Dupont

Travel Office:

Susanne Stanley

GRADUATE STUDIES & SPONSORED RESEARCH

RESEARCH COMMITTEES 2001-2002

Faculty and Academic Affairs Committee, 2001-2002

Ernest Hall, chair
Marlaine Chase
Julie Evey
Karen Parker
Kathy Rodgers
Peggy Harrel, ex officio
Ruth Miller, ex officio

Graduate Council, 2001-2002

Peggy Harrel, chair
Hilary Braysmith
Ernest Hall
Ramadan Hemaida
Carol Hermes
Henri Maurice
Thomas Philleo
Thomas Rivers
David Schultz
Melissa Vandever
Daniel Wade
David Westhuis
Ann White
Sandy Farmer, ex officio
Martha Niemeier, ex officio

IRB (Institutional Review Board)

Peggy Harrel, chair
Kathy Elpers
Susan Gooden
David Jaquess

Aimee Luebben
Leslie Nunn
Julie Pilcher
Ronda Priest
Garvin D. Senn, III

RISC (Research, Innovation, Scholarship, Creativity) Grant Committee, 2001-2002

Scott Gordon, chair
Karen Bawel
Hilary Braysmith
Daniel Friesner
Matthew Graham
Peggy Harrel
Leigh Anne Howard
NiCole Keith
Kent Scheller

Teaching Enhancement Awards Committee, 2001-2002

Timothy Schibik, chair
Juzar Ahmed
Karen Bonnell
Scott Gordon
Judith Halstead
Peggy Harrel
Mohammed Khayum
Ruth Miller
Joseph Palladino
Tom Philleo

GRADUATE STUDIES & SPONSORED RESEARCH

GRADUATE STUDIES & SPONSORED RESEARCH STAFF

Peggy F. Harrel, Ph.D., Director of Graduate Studies & Sponsored Research

1989-present University of Southern Indiana, Evansville, IN

2002-present Assistant professor – English Department

1997-present Director of Graduate Studies and Sponsored Research

Position Roles and Responsibilities

- Serve as an advocate for graduate education.
- Enhance the intellectual community of scholars among both graduate students and faculty.
- Set a climate for excellence in scholarship and research.
- Exercise general supervision for the maintenance of quality in all graduate programs.
- Represent the interests of researchers to the administration and the interests of the administration to researchers.
- Oversee the processing of graduate admissions, records, and awarding of the degrees.
- Chair and provide administrative support to the Graduate Council.
- Allocate graduate assistantships.
- Initiate, develop, and implement activities that assist faculty to improve skills in grant proposal development and grant acquisition.
- Facilitate and direct the institutional review and approval of grant proposals and other pre-award activities.
- Provide information on research and other sponsored funding opportunities.
- Monitor the use of human subjects and live animals in research and coordinate and supervise other compliance activities.
- Supervise support staff in Graduate Studies and Sponsored Research.

Teaching

Fall 2001 LBST 601 – Language

Scholarship

Publications

D. Riggle and P. F. Harrel. (2002). "The Freedom of Information Act & SROs," *SRA Journal*.

Harrel, P. F. (2000). Beyond the Freedom of Information Act: What Is Your Responsibility? *SRA News*, 32:5, 1,4.

Selected Papers & Presentations

2002 American Association of State Colleges and Universities (AASCU) Grants Resource Center (GRC) Spring Liaison Officers Meeting, Washington D.C., "Using Funded Proposals Effectively" Workshop with J. Austin, L. Griner, D. Riggle; presentation on Freedom of Information Act

2000 Society of Research Administrators International (SRA) Annual Meeting, St. Louis, MO, "Operational Issues for Small Sponsored Projects Offices."

2000 SRA Annual Meeting, St. Louis, MO, "Challenges Facing the Small Research Office."

2000 AASCU GRC Spring Liaison Officers Meeting, "Funded Proposal Workshop on Freedom of Information Act: Campus Perspective."

Service

Offices Held in National & State Professional Organizations

01-02 Liaison Officers Advisory Board, American Association of State Colleges and Universities (AASCU) Grants Resource Office (GRC) (elected)

99-02 Midwestern Association of Graduate Schools (MAGS), Distinguished Thesis Committee (appointed)

GRADUATE STUDIES & SPONSORED RESEARCH

USI Committee & Task Force Service

Academic Affairs Council

Academic Planning Council

Academic Program Review Committees

Administrative Appeals Committee

Faculty and Academic Affairs Committee

Graduate Council, **Chair**

Institutional Animal Care and Use Committee

Institutional Review Board for the Protection of Human Subjects, **Chair**

Professional Consultation

2000-present Institutional Animal Care and Use Committee (IACUC) for the Indiana University Evansville Center for Medical Education

2001 Evansville Department of Metropolitan Development, Grant-writing Workshop: Grant Writing for Community Development

Community Position & Membership (Indiana)

1999-2002 Board Member, United Way of Southwestern Indiana

USI Workshops

August 2001 New Faculty Orientation

October 2001 Center for Teaching and Learning Excellence

March 2002 Center for Teaching and Learning Excellence

June 2002 Grant Workshop for the Communications Department

Beverly Thomas, Administrative Assistant, Graduate Studies

2000-present Administrative Assistant – Graduate Studies

Position Roles and Responsibilities

- Coordinate graduate student admissions process.
- Enter student demographic and programmatic information into SIS+ database.
- Correspond with students through written or verbal communication.
- Compile coordinate, and maintain information and files on prospective applicants and admitted graduate students.
- Collect application fees, reconfigure GPAs, and process data.
- Coordinate relevant graduate studies activities (including admissions, registration, course approvals) with other University administrative offices.
- Provide secretarial support for Graduate Council and for the Director of GSSR.
- Maintain budgetary records for office, initiate payment for expenditures, and coordinate GSSR purchases.
- Coordinate publication and revision of graduate studies documents and publications.
- Perform the administrative duties for the MALS program.
- Edit and maintain the Graduate Studies and Sponsored Research websites.

Professional Development

How To Get Started

Web Graphics

Tables And Forms

Communicating With Campus Pipeline

Getting Started with PowerPoint

Getting Started with FrontPage

Service

National Association of Graduate Admission Professionals, member

Kiwanis International – Historic Newburgh, member

Volunteer for Ohio Township Public Library System

GRADUATE STUDIES & SPONSORED RESEARCH

Heather Drago, Senior Administrative Assistant, Sponsored Research

Feb-May, 2002 Temporary Senior Administrative Assistant, Sponsored Research

May 2002-present Senior Administrative Assistant, Sponsored Research

Position Roles and Responsibilities

- Maintain information on grant opportunities and funding agencies.
- Provide information and support to faculty and staff regarding sponsored research and University procedures.
- Conduct monthly email distribution of Deadlines to faculty.
- Coordinate support to faculty and staff submitting proposals for external funding.
- Obtain administrative approval and provide administrative assistance for grant proposals.
- Maintain a database of submitted proposals, submit a monthly grant activity report, compile an annual report.
- Coordinate information on grant submissions and notifications with the Special Funds Accountant.
- Maintain sponsored research files, including grant proposals and guidelines.
- Administer Institutional Review Board application process, including performing a technical review and acting as the IRB Committee's Recorder.
- Receive and process internal grant competition proposals.
- Perform regular secretarial duties concerning sponsored research for the Director of GSSR.

Nathaniel Rivers and Ron Pitman, Student Workers

Position Roles and Responsibilities

- Greet visitors and provide general information regarding graduate studies.
- Copy graduate studies and sponsored research materials.
- Maintain files, prepare form letters, process mail, and respond to requests for information.
- Use Access, Excel, Outlook, and Word programs to assist graduate studies and sponsored research.