

Summer Camps and Conferences

LIVING ARRANGEMENTS

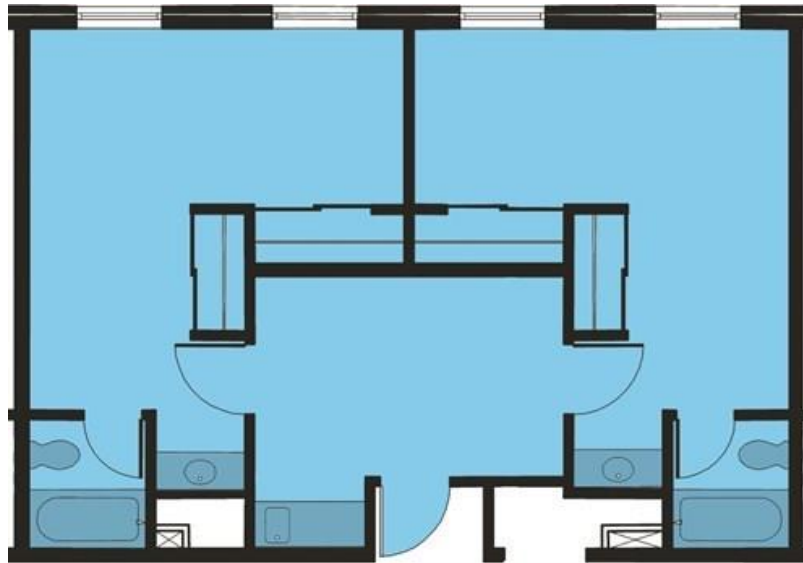
Newman, Governors, O'Bannon and Ruston Halls make up the residence halls. Newman and Governors each hold 180 residents with men and women in separate suites. O'Bannon and Ruston each hold 220 residents with men and women in separate suites. The residence halls are in close proximity to the Recreation, Fitness and Wellness Center and Rice Library.

FEATURES

This type of living arrangement allows for conference participants to connect with each other, as they are going through similar experiences.

FACILITIES

The residence halls have interior hallways and a suite-style layout (see floor plan below). Two bathrooms are available in each two bedroom suite, assuring that conference participants share a bathroom with only one other person. A large first floor lounge is available for programs and events. Vending machines are in each building, and a laundry room is on the second floor.



FURNISHINGS

Each living area has a couch, chair and mini kitchen with a sink, under the counter refrigerator, and cabinets for storage. Bedrooms have desks, chairs, and bunk beds (can be unbunked). Mattresses are standard twin.

LIGHTING

Overhead lighting is provided in all areas of the residence hall suite. Ample outlets are provided for conference participants to bring individual lamps (not halogen).

HEATING/COOLING

Individual temperature controls by suite.

OCCUPANCY

Up to four people may live in a suite, two per bedroom.

TECHNOLOGY

Rooms are equipped with digital telephone jacks, cable TV hookup and wireless Internet.

WHAT TO BRING

- Bedding
- Towels
- Personal items (shampoo, soap, toothbrush/toothpaste, etc.)
- Telephone card for long distance calls (if desired), local calls are free
- Alarm clock

SAFETY CONCERNS

- Leave valuables at home. Personal possessions are important to everyone so do not risk loss or damage. Expensive electronic equipment and jewelry are targets for theft. USI shall not be directly or indirectly liable for loss or theft of personal property, or for damage or destruction of such property by fire, water, or other causes.
- Consider a cash card or credit cards as an alternative to cash. If you must use cash, bring small denominations of bills.
- Each person is provided with a key that will open both the front door and individual room. We encourage participants to keep the room door locked at all times.

INFORMATION ABOUT YOUR STAY

Summer Services Assistants (SSAs) are USI students living on campus and are available during check in, check out and evening desk hours. SSAs will also be on call. Their main role is a resource for camp sponsors and participants. SSAs can answer and/or help with questions and concerns.

Key cards will be given to each individual participant. At check out, it is the responsibility of the person assigned the key card to return it to Housing and Residence Life staff. Key cards lost or not returned will be billed to the camp sponsor for \$60 each key card.

Trash is the responsibility of the participants. Every morning members of each room should empty any trash into dumpsters located outside the residence halls. Trash left behind in rooms will be assessed a \$25 per bag fee.

USI expectations, policies and regulations are printed and posted throughout the hall. All persons using or visiting USI are responsible for reading and abiding by them. Copies are available at check in for sponsors and participants to read.

Contact Information

Newman Lobby	812-492-7515
Governors Lobby	812-492-7516
O'Bannon Lobby	812-492-7517
Ruston Lobby	812-492-7518