

The logo is circular with a dark blue background and a lighter blue border. The words "ECONOMIC" and "OUTLOOK" are written in a bold, yellow, serif font, stacked vertically. Below them, the word "Luncheon" is written in a smaller, white, cursive font. The entire logo is set against a dark blue background with a subtle grid pattern.

**ECONOMIC  
OUTLOOK**

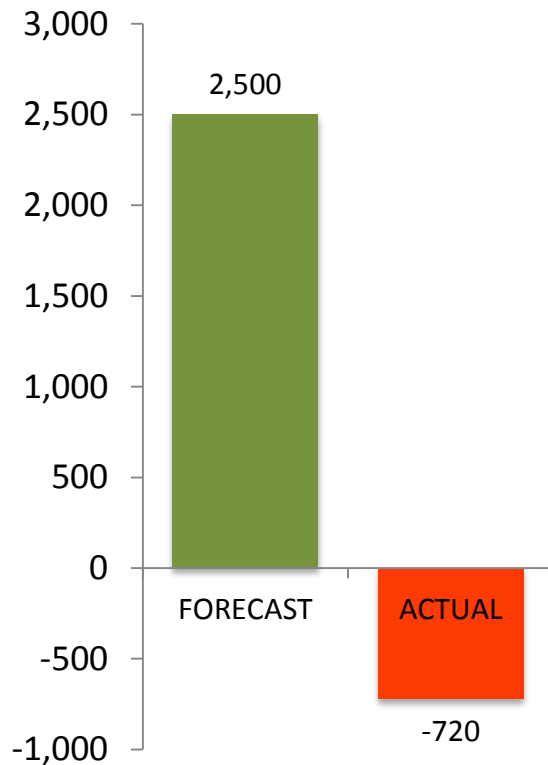
*Luncheon*

**Dr. Sudesh Mujumdar**  
Chair of the Economics &  
Marketing Department and  
Professor of Economics  
USI Romain College of Business

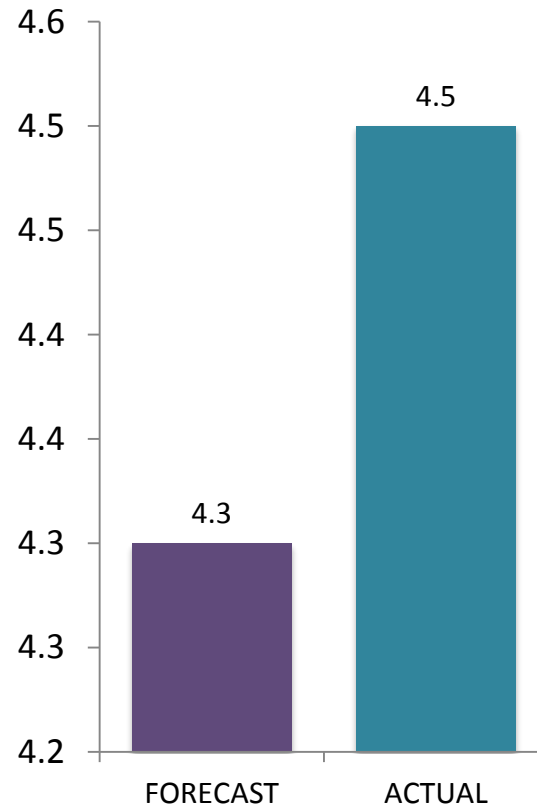
# Evansville MSA: Key Performance Indicators

## Actual vs Forecasted Values for 2016

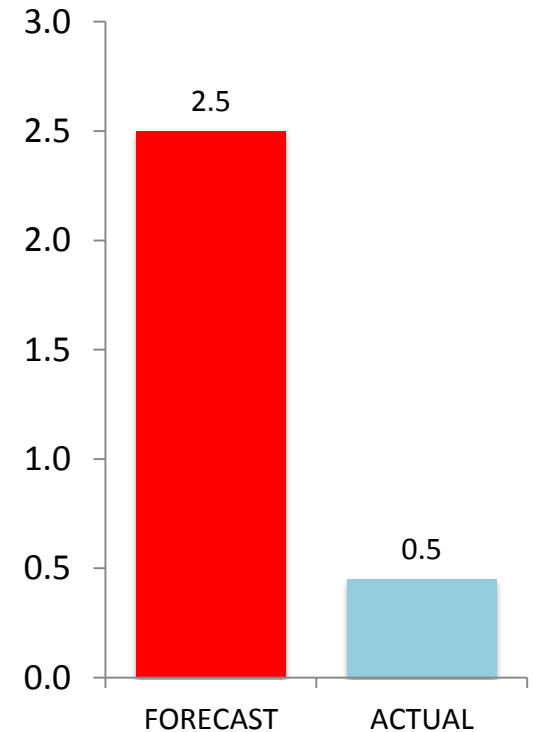
### Change in nonfarm employment



### Unemployment rate (%)



### Growth in real output (%)



# Evansville MSA: Economic Outlook

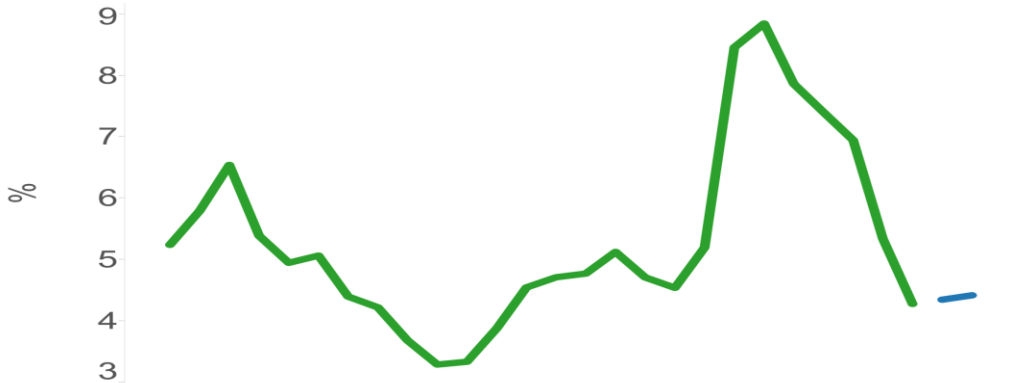
2017

**Change in nonfarm employment:**



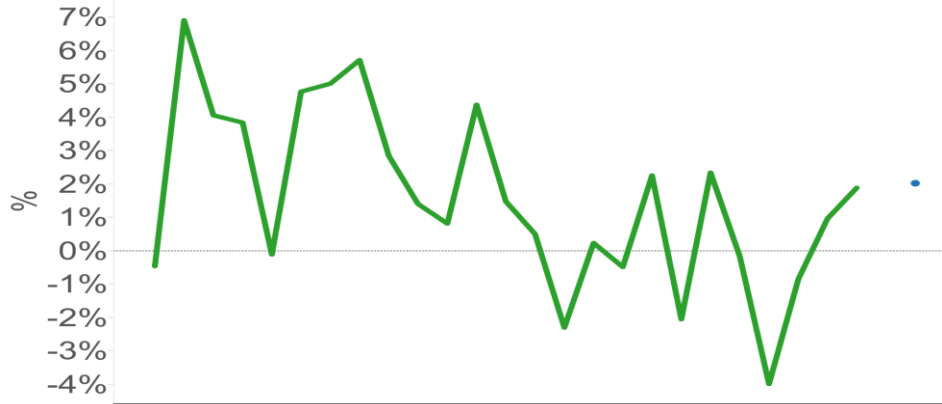
450

**Unemployment rate:**



4.4 %

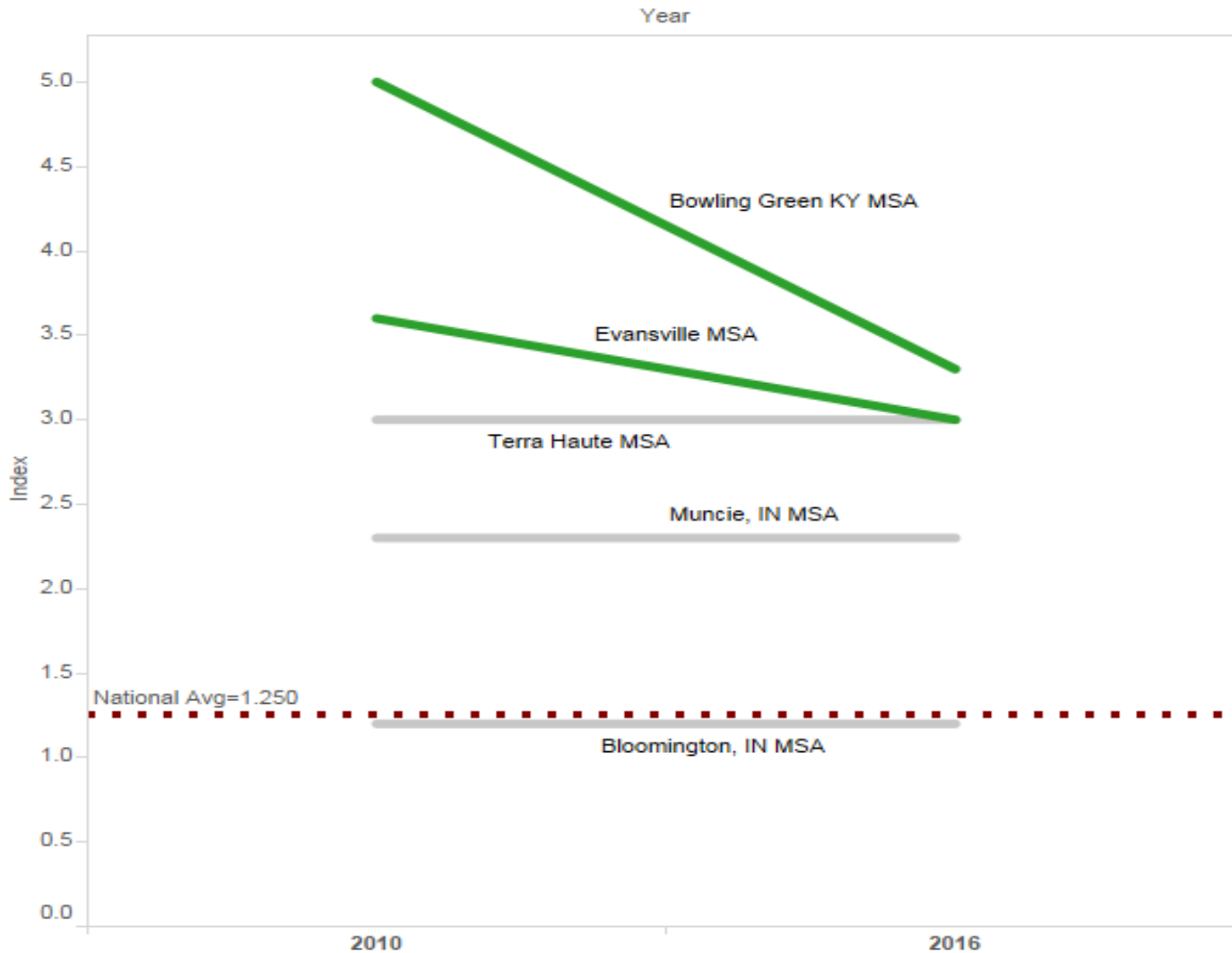
**Percent Change in Real Output:**



1.5 %

Sources: IHS Economics,  
STATS Indiana

# The McBucks Index (# of McDonald's/# of Starbucks)



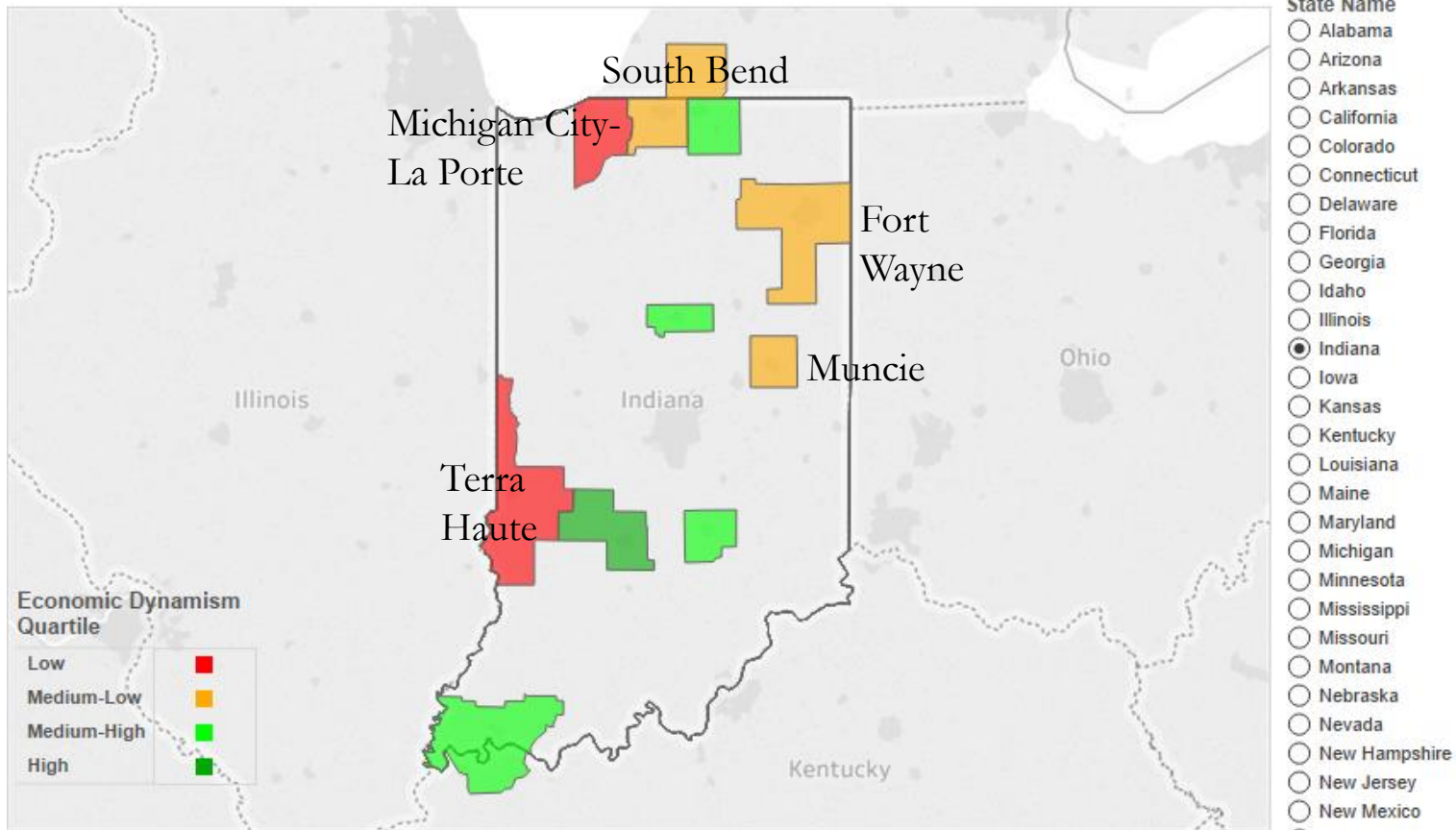
Evansville Region  
 2010 3.6  
 2016 3.0

Source: Dr. Perry  
 Burnett's computations

# Evansville vs Other Indiana Small Cities: Economic Dynamism

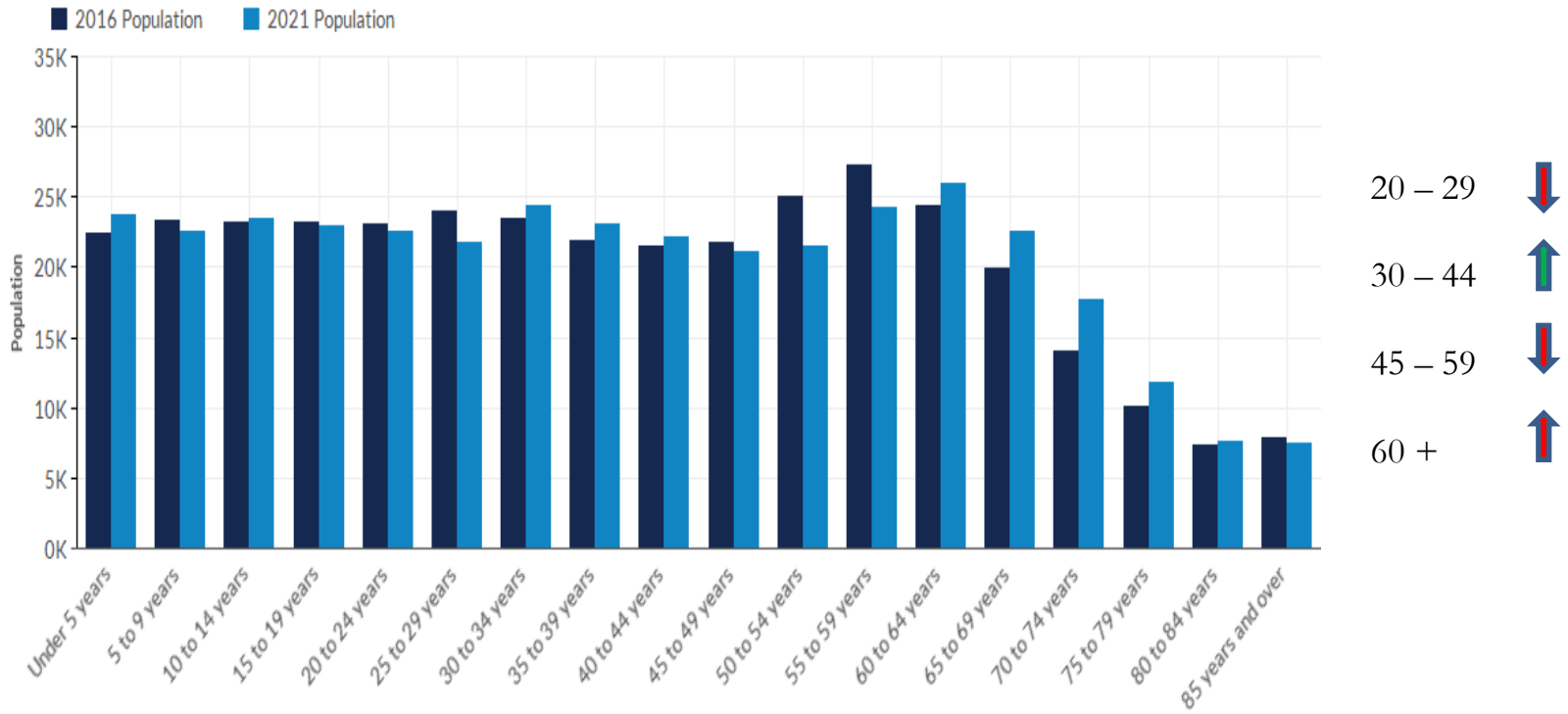
## Small City Economic Dynamism Index

To zoom into a state, click on one of the buttons to the right (do not click on the map).



©2016 Federal Reserve Bank of Atlanta. All rights reserved. Permission is granted to reproduce for personal and educational use only; please credit the Federal Reserve Bank of Atlanta.

# Evansville Region: Demographic Challenges



Source: EMSI