



 PART 8 OF 9

# BEYOND YOUR BORDER

How Expanded Experience Builds Your Competitive Edge

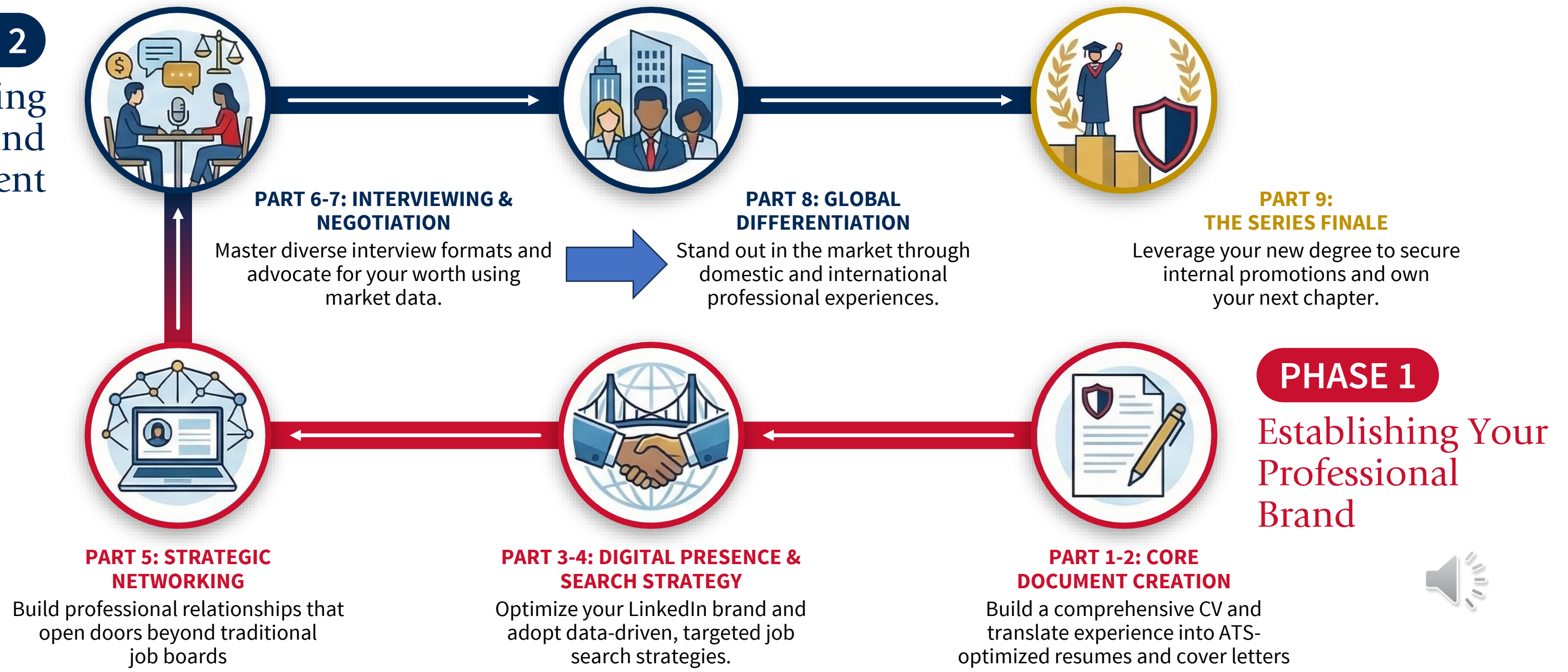
Presented by USI Career Success Center

 [usi.edu/career-success](https://usi.edu/career-success)



# ROADMAP TO EXCELLENCE: THE USI GRADUATE STUDENT CAREER WEBINAR SERIES

**PHASE 2**  
Mastering  
The Market and  
Advancement



**PHASE 1**  
Establishing Your  
Professional  
Brand



# REFRAMING "BEYOND BORDERS"

## "Beyond Borders"

means any experience that took you outside your professional, geographic, or cultural comfort zone.

### Geographic



Out-of-state internships, regional practicums, international programs, remote work for distant employers.

### Cross-sector



Healthcare → nonprofit, corporate → government, for-profit → education, volunteer to professional bridge.

### Cultural



Serving diverse populations, multilingual environments, cross-cultural collaboration, underserved communities.



You don't have to leave the country to build a globally competitive edge.



# THE DATA: WHY EXPANDED EXPERIENCE MATTERS

66%

of interns are more likely to receive a full-time job offer.

*NACE, 2024*

Top 5

skill employers seek is adaptability - developed through cross-context experience.

*Yale OCS, 2023*

77%

of MBA graduates report salary increases after roles leveraging cross-sector skills.

*GMAC, 2021*

“Students who complete experiential learning activities show significantly higher career satisfaction and starting salary outcomes compared to peers without comparable experiences.”

*National Association of Colleges and Employers (NACE). (2024). NACE Experiential Education Survey.*



# TYPES OF EXPANDED EXPERIENCE

— Expect questions that dig into your **ACTUAL** experience! —

**01**

## Out-of-State Internships & Practicums

Any fieldwork, clinical rotation, or internship completed in a different state or region. Especially valuable for healthcare, social work, and education students.



LOCAL  
ACCESS

**02**

## Cross-Sector Volunteer Leadership

Leading or coordinating volunteer programs across sectors - healthcare professional volunteering in nonprofit, business student serving on a community board.



LOCAL  
ACCESS

**03**

## Regional & Rural Experience

Serving underserved or underrepresented geographic communities. Rural health practicums, Appalachian outreach, tribal community partnerships.



LOCAL  
ACCESS

**04**

## International Programs & Global Work

Study abroad, international research collaborations, global virtual internships, humanitarian fieldwork. Demonstrates cross-cultural competency.



GLOBAL  
ACCESS

# RESUME & CV BEST PRACTICES

Documenting Expanded Experience - Yale SOM & Harvard OCS Frameworks



## Listing Location

- Always list City, State explicitly - never assume the reader knows your organization's location (*Yale SOM Resume Guide, 2022*).
- For international experience: City, Country.
- For remote roles serving distant employers: list employer's HQ city, then note 'Remote' in parentheses.

### Format:

Organization Name | City, State | Month Year – Month Year.

## Sar Bullet Framework

### Situation → Action → Result

- S** Context: cross-cultural, cross-sector, or cross-geographic setting.
- A** Specific transferable action YOU took in that unfamiliar environment.
- R** Quantified or qualified result - impact on people, programs, or outcomes.

### Transferable Skills to Highlight:

*Adaptability • Cross-cultural Communication  
• Resourcefulness • Problem-Solving • Initiative*



# RESUME BULLETS: BEFORE & AFTER

Applying the SAR Framework to Expanded Experience



## Healthcare / MSN Student

### BEFORE:

Completed clinical rotation in rural Indiana.



### AFTER:

Delivered primary care to 45+ underserved patients weekly during 300-hour rural clinical rotation in Sullivan County, IN - applying trauma-informed assessment in a resource-limited environment with no attending physician on-site.



## MBA Student - Cross-Sector Volunteer

### BEFORE:

Volunteered with Boys & Girls Club.



### AFTER:

Designed and facilitated 6-session financial literacy curriculum for 28 adolescents at Boys & Girls Club of Evansville, adapting corporate training methodology to community nonprofit context; 94% of participants demonstrated improved savings behavior (pre/post survey).



## MSW Student - Out-of-State Practicum

### BEFORE:

Completed internship in Chicago.



### AFTER:

Managed caseload of 18 at-risk youth at Chicago Department of Family Services (Chicago, IL), navigating multi-agency systems and cross-cultural family dynamics in an urban setting distinct from prior professional experience.



# INTERVIEW FRAMEWORK: STAR + EXPANDED CONTEXT

## S | Situation

*Set the cross-context stage:  
“While completing my  
practicum in rural Sullivan  
County, where the nearest  
hospital was 45 minutes  
away...”*

## T | Task

*Name the specific challenge  
that required adaptation:  
“I was responsible for  
conducting initial mental  
health assessments with no  
supervising clinician  
present on-site.”*

## A | Action

*Describe YOUR specific  
actions - emphasize  
adaptability,  
resourcefulness, cross-  
cultural skill:  
“I developed a remote  
consultation protocol with  
the supervising psychiatrist  
and created a crisis  
resource card for patients.”*

## R | Result

*Quantify or qualify impact:  
“Zero escalation incidents  
across 300+ patient  
contacts; protocol later  
adopted by the practicum  
site as standard practice.”*

### Out-of-State Internships & Practicums:

*“Tell me about a time you adapted to an unfamiliar environment.” / “Describe working with a population different from your own.” / “Give an example of resourcefulness under constraint.”*



# BUILDING EXPANDED EXPERIENCE NOW



— Accessible pathways for every USI graduate student —



## Cross-Context Practicums

Request placements in underserved, rural, or culturally distinct communities. Talk to your program director - many have relationships with sites outside the Tri-State area.



## USI Community Partnerships

Boys & Girls Club of Evansville, YWCA, Southwest Indiana Workforce Board actively seek graduate-level volunteers and project leaders. Contact the Career Success Center for introductions.



## Virtual & Remote Internships

Remote internships with employers in other states count as geographic expanded experience.  
**Platforms:** Career Launch, Parker Dewey (remote only), LinkedIn Remote Jobs. Filter by 'remote' and 'graduate level.'



## International Programs

USI's Office of Study Abroad & International Programs offers faculty-led trips, exchange programs, and global research partnerships. FAFSA aid can apply. [usi.edu/global](http://usi.edu/global)



## Copilot Prompt

*"I am a [program] graduate student at USI in Evansville, Indiana. Suggest 5 ways I can build expanded cross-context experience before graduation, including remote and local options."*



# THE ROI OF EXPANDED EXPERIENCE

What the Research Tells Employers - and What It Tells You



“Adaptability is the #1 competency differentiating high-potential graduate candidates from the rest of the applicant pool - and it is developed through experience in unfamiliar contexts, not through coursework.”

*Yale School of the Environment, Career Development Program (2023)*

## Starting Salary



**85%**

Higher job offer rate for students with structured experiential learning.

*NACE, 2024*

## Career Advancement



**3x**

Faster promotions for employees who demonstrate adaptability in hiring.

*Yale OCS, 2023*

## Network Expansion



**Cross-sector**

Relationships built through expanded experience open doors within and beyond your industry.



*Harvard OCS*

# RESOURCES & YOUR ACTION PLAN

— Part 8 of 9 - USI Graduate Student Career Excellence Series —

### USI CAREER SUCCESS CENTER

- Orr Center, Room 1051
- (812) 464-1865
- [usi.edu/career-success](http://usi.edu/career-success)
- [career.center@usi.edu](mailto:career.center@usi.edu)
- Schedule via Career Launch (myUSI)

### RECOMMENDED RESOURCES

- LinkedIn Learning (Free via myUSI)
- Career Launch - filter by Remote/National
- Parker Dewey - micro-internships
- [usi.edu/global](http://usi.edu/global) - Study Abroad
- USI Community Partnership Programs

## YOUR 7-DAY ACTION PLAN



Coming Up Next: **PART 9** | Your Degree, Your Moment  
Leveraging Your Degree to Advance From Within

# THANK YOU FOR LISTENING!

---

UNIVERSITY OF SOUTHERN INDIANA<sup>®</sup>



**CAREER  
LAUNCH**

## NEED CAREER SUPPORT??

- ▶ You can visit us in the Career Success Center (located in the Orr Center) or book an appointment on Career Launch!
- ▶ Questions? Email us at [career.center@usi.edu](mailto:career.center@usi.edu) or give us a call to schedule an appointment (812) 464-1865!

