



Board of Trustees Long-Range Planning Committee Meeting
UC 206
Thursday, 11/6/2008
1:15 pm to 2:15 pm CT

1. REVIEW OF THE ACADEMIC PROGRAM DEVELOPMENT PLAN

Bennett Present

The Academic Program Development Plan will be reviewed.

1108 LRP Attachment A - New Program Development Plan - Page 2

2. REPORT ON LIVING LEARNING COMMUNITIES

Bennett Present

Jeff Thomas, academic coordinator of the Living Learning Communities, and Laurie Berry, director of Residence Life, will present a report titled USI Living Learning Communities: Helping Students Connect and Succeed.

1108 LRP Presentation on Living Learning Communities - Page 3

**Attachment A
UNIVERSITY OF SOUTHERN INDIANA
New Program Development Plan**

**Revised by Academic Planning Council
October 27, 2008**

Associate Degree

Baccalaureate Degree

Graduate Degree

2007-2009 Biennium

Biochemistry
Criminal Justice
Environmental Science

2009-2011 Biennium

Anthropology
Arts and Heritage Management
Business Economics
Business/Engineering
Entrepreneurship
Geography
Health Informatics
International Business
Occupational Therapy Assistant
Respiratory Therapy

Communications
Food and Nutrition (Dietetics)
Health Administration (MSW/MHA)
Physical Therapy
Public Health Administration (MSW/MPA)
Special Education/Exceptional Needs

2011-2013 Biennium

Electrical and Computer Engineering
Mechanical Engineering

Environmental Science
Human Performance
Imaging Sciences
Medical Records and Health Informatics
Occupational Therapy
Pharmacy

2013-2015 Biennium

Forensic Science

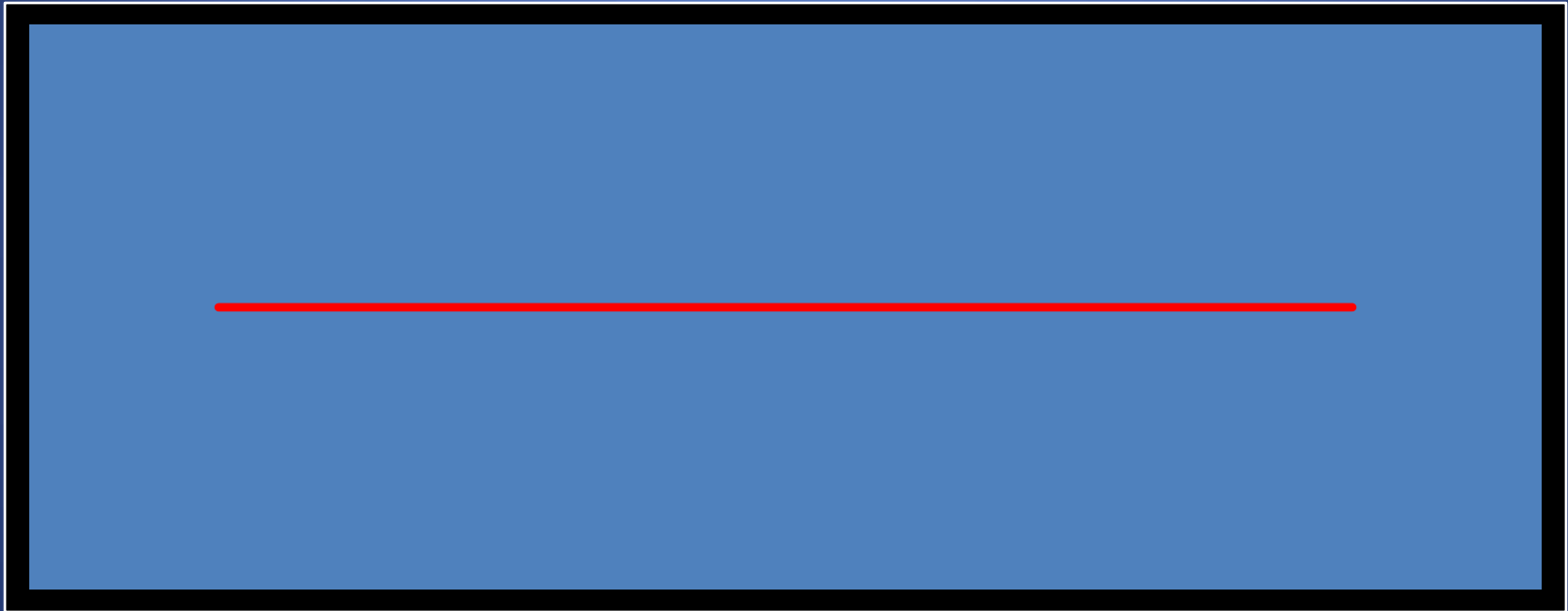
USI Living Learning Communities: Helping Students Connect and Succeed

Laura Berry, Director of Residence Life

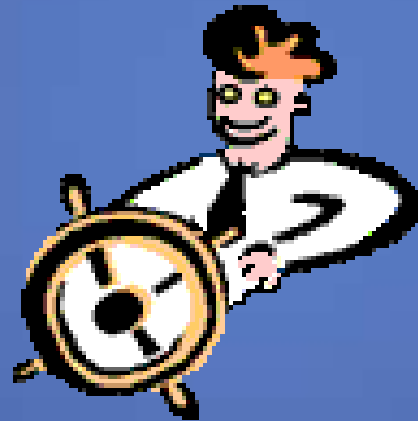
Jeff Thomas, Academic Coordinator



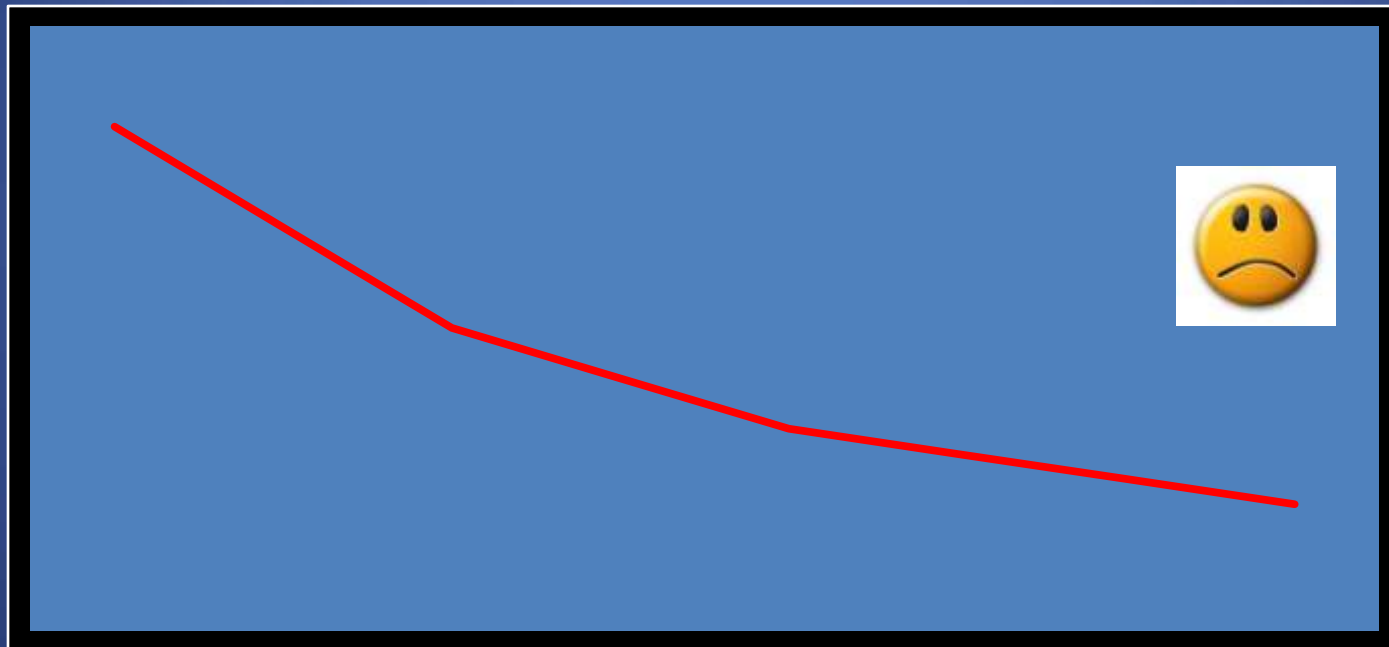
Do some students experience a rather “flat”
freshman year?



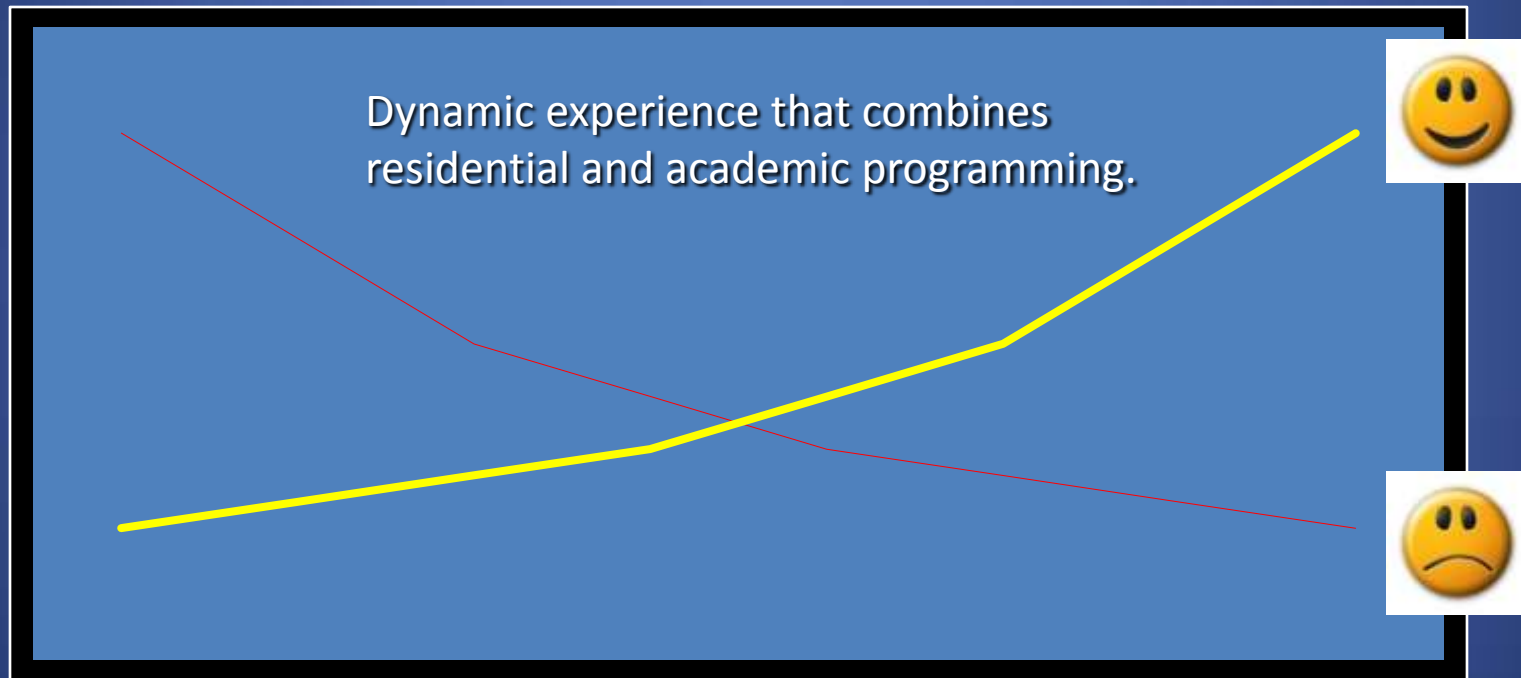
USI can foster programs that
navigate toward a positive system
for our students



Without such systems a stagnant to negative trend of student disconnect and longing for home might occur



Creating dynamic freshman level programs may promote a sense of engagement and feeling of home for a first-year student.



Living Learning Community Definition

A residential education floor based on an academic unit or general theme that integrates academic learning and community living.

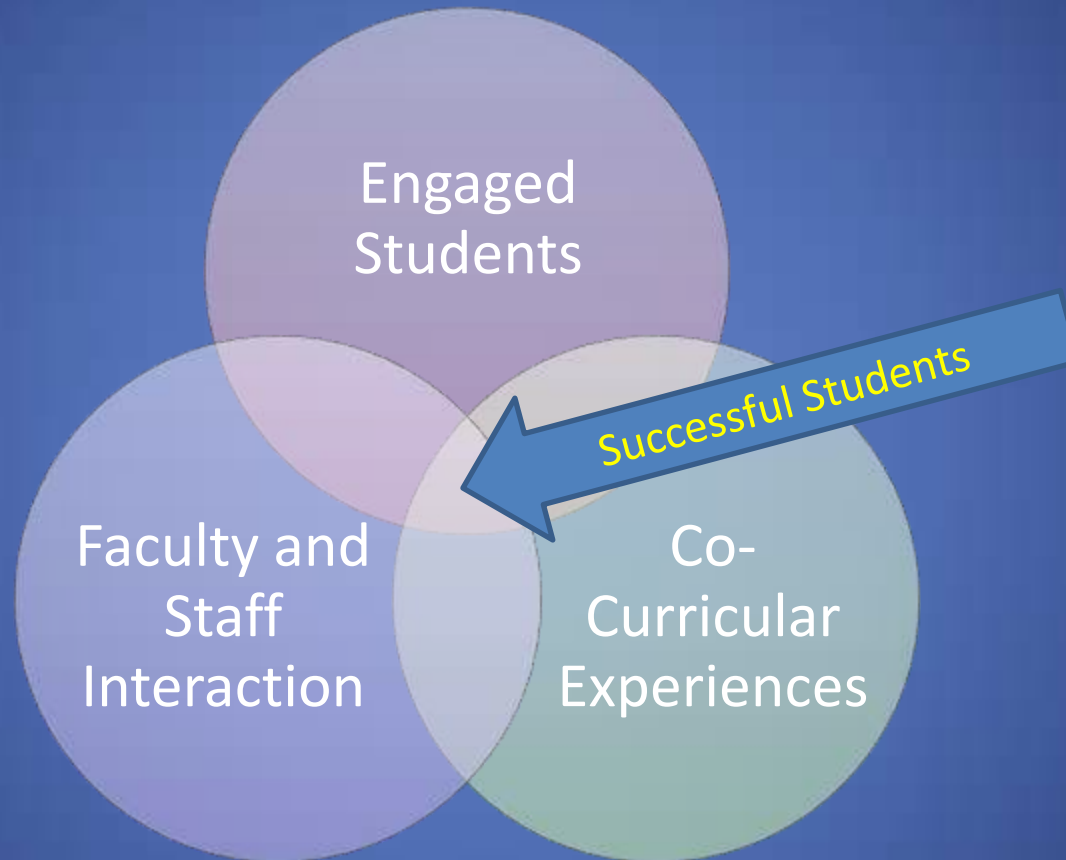
USI has 7 existing LLCs: nursing and health professions, honors, STEM (science, technology, engineering, and mathematics), business, emerging leaders, education and global communities.

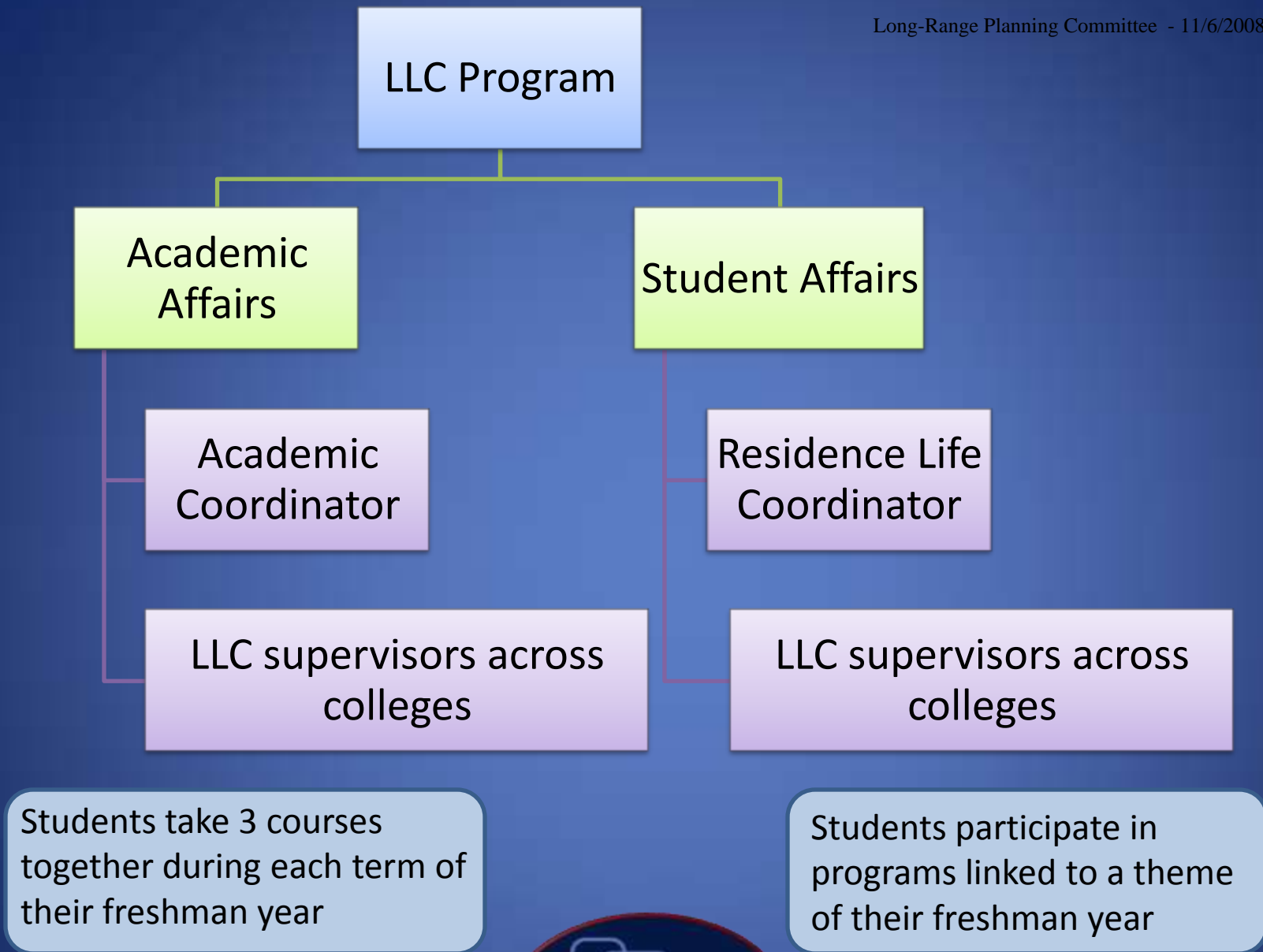


Incoming freshmen with similar interests, goals, and academic programs can apply to be placed on designated floors within Ruston Hall.



USI Living Learning Communities Philosophical Themes





Students take 3 courses together during each term of their freshman year

Students participate in programs linked to a theme of their freshman year



Intentional Links

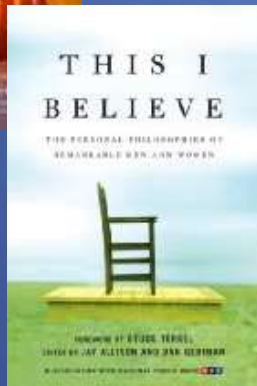
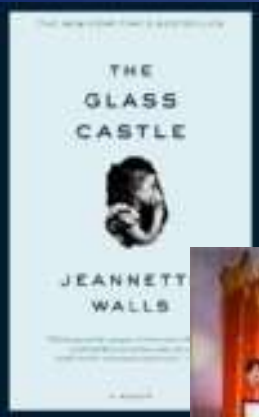
- LLCs help students create a strong link between their lives in the residence hall and learning experiences in the classroom.



Pippa Cunningham, former LLC student and RA



Bonding through Books program



- Students are mailed a copy of a book that is usually coordinated with the Evansville One Book, One Community program.
- Meet weekend before school for a luncheon and book discussion
- Book used in first semester courses along with authors as guest speakers



Faculty participation

To date more than 25 faculty have taught in the LLC program with projects like:

- Studying the impact of health care & insurance coverage
- Preparing nutrition presentations for local K-8 classrooms
- Working in afternoon school programs
- Writing essays about student beliefs for a campus-wide competition



Positive Results

Analysis into LLC students versus non LLC students indicates significant **positive** differences for LLC students in:

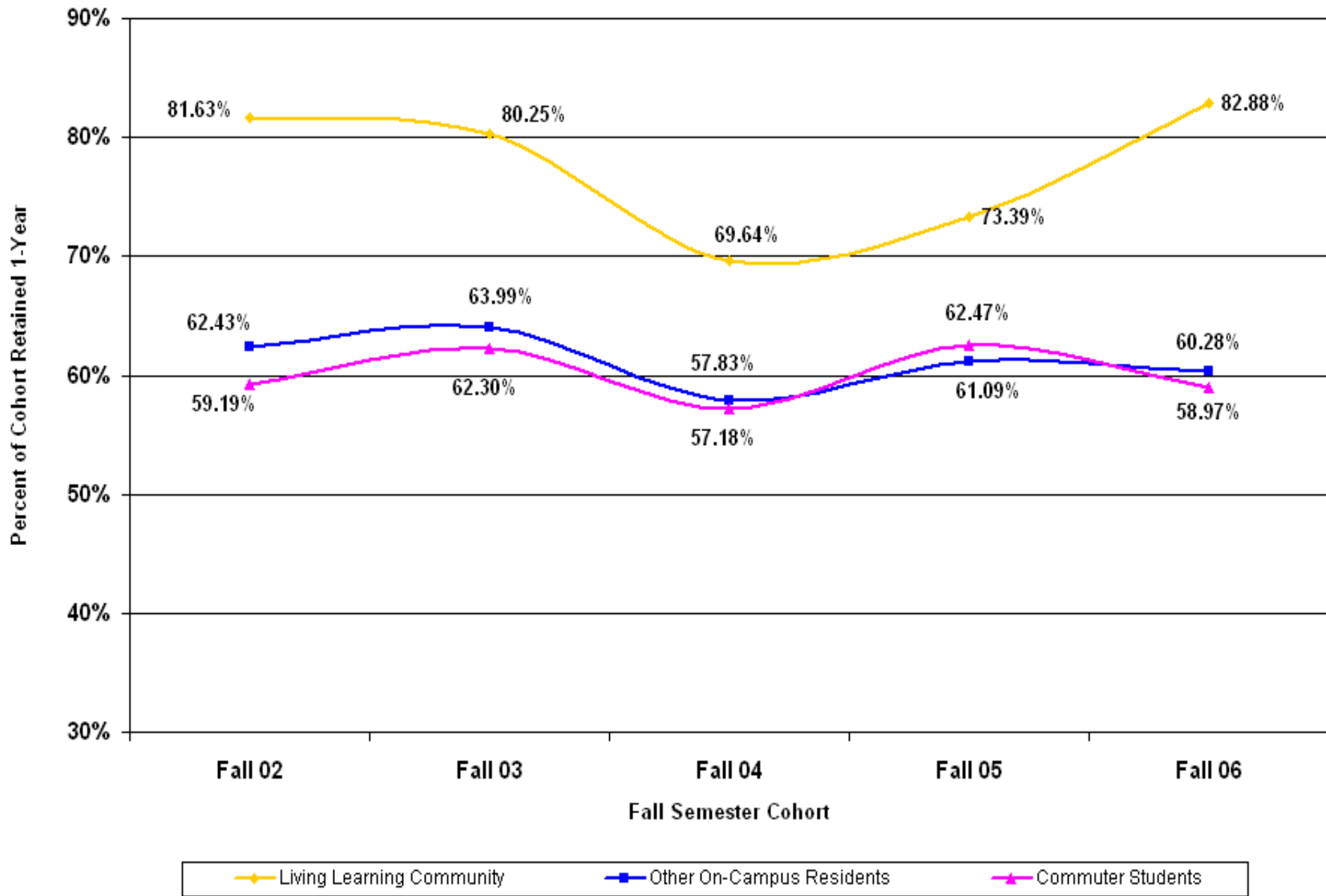
- Campus participation in student clubs
- The amount of time spent studying
- The amount of contact with teaching faculty
- Retention to the sophomore year



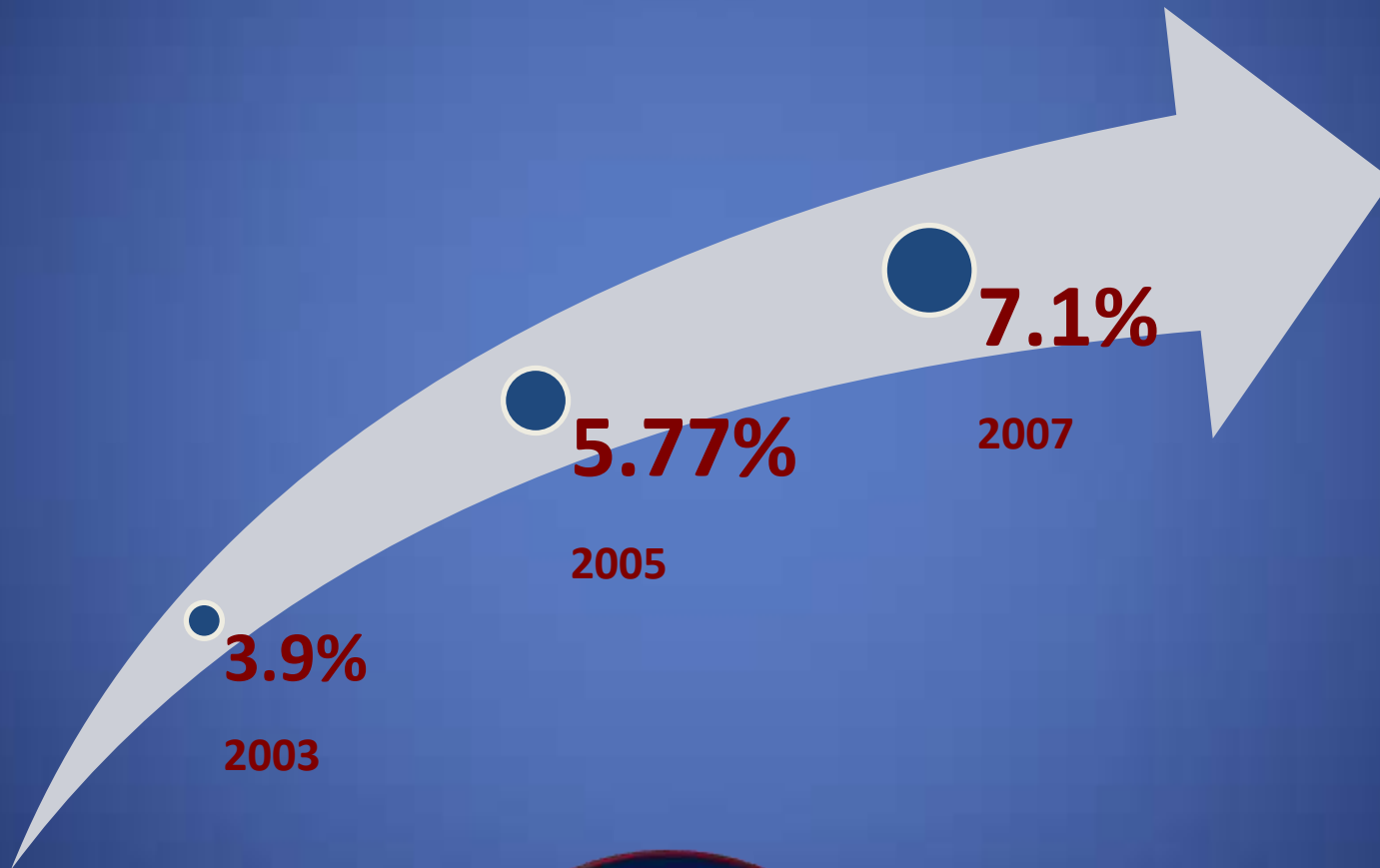
Results gathered via USI Assessment Day data



1-Year Retention of First-Time Students



Participation in LLCs is increasing as a percent of the total freshman class



Student Quotes



- “Living together allows us to become closer and help each other succeed.”

- “When you live with your classmates, group studying becomes as easy as walking next door and opening up your notes.”



Programming

✦ Skating for a cancer fund raiser



✦ Making liquid nitrogen ice cream



Safe Halloween Night



- On Halloween night LLC wings put together a safe way for local children in the community to trick-or-treat.



United Nations Children's Day



- LLC students teach lessons at a local school about living as a 10-year old in different countries



International Nights

Each week the Global Community sponsors a different international night themed program



Expansion Plans 2009

Additional Living Learning Communities

- Liberal Arts
- Social Work
- Exploring Majors
- Sophomore Year Experience

